

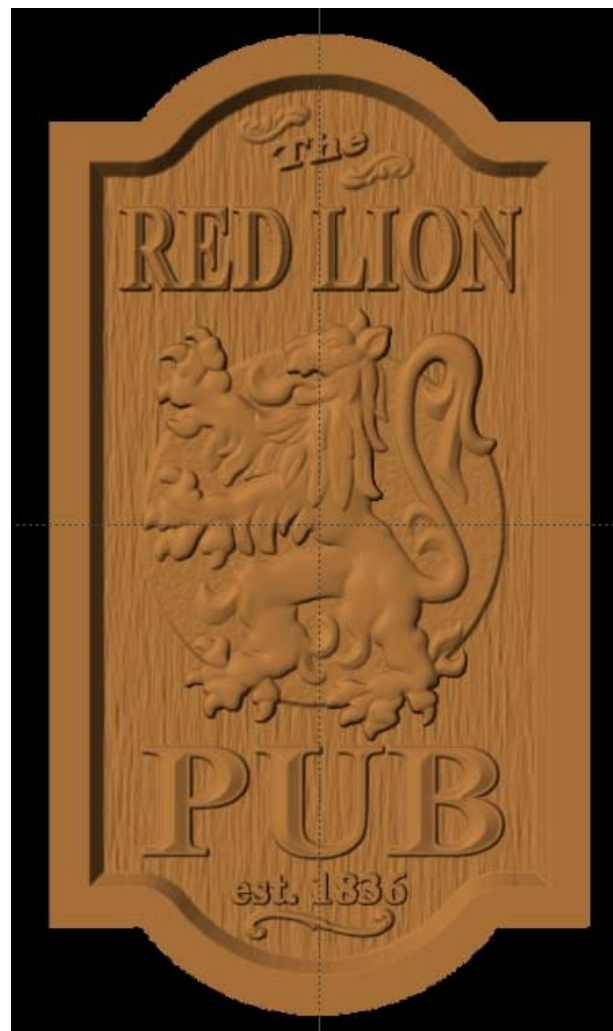
Red Lion Pub Project

CREATING A CLASSIC BRITISH STYLE PUB SIGN WITH DIFFERENT TEXTURES
IN THIS EXERCISE WE WILL SHOW YOU HOW TO APPLY BACKGROUND TEXTURES TO A SIGN WE WILL CREATE FROM EXISTING ELEMENTS.

NOTE: THIS PROJECT USES A SEVERAL PATTERNS THAT ARE NOT AVAILABLE IN THE BASIC PATTERN LIBRARY.

This project covers the following design concepts:

- SETTING UP THE DRAWING VIEW TOOLS
- CREATING THE SIGN OUTLINE
- CREATING THE SIGN BACKGROUND
- ADDING CUSTOM MATERIAL TEXTURE TO A SURFACE
- APPLYING MULTI LAYERED TEXT
- DISTORTING TEXT USING THE EDIT ENVELOPE TOOL



The Welcome Screen will appear upon starting of the Designer Software.

Select **New Project** and create a board that is 11-1/4" wide by 20" long by 3/4" thick.

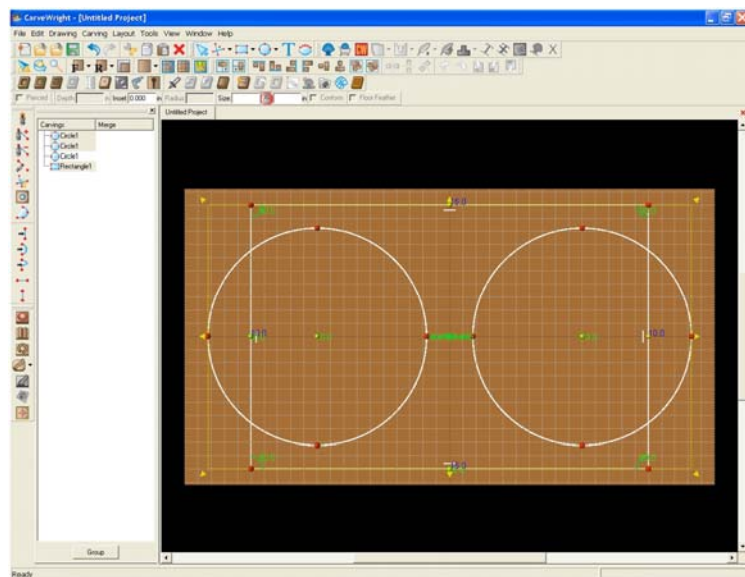
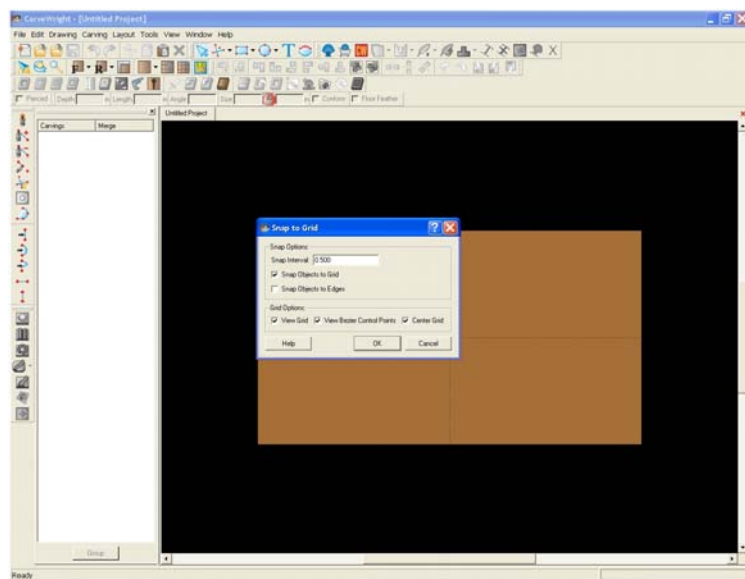
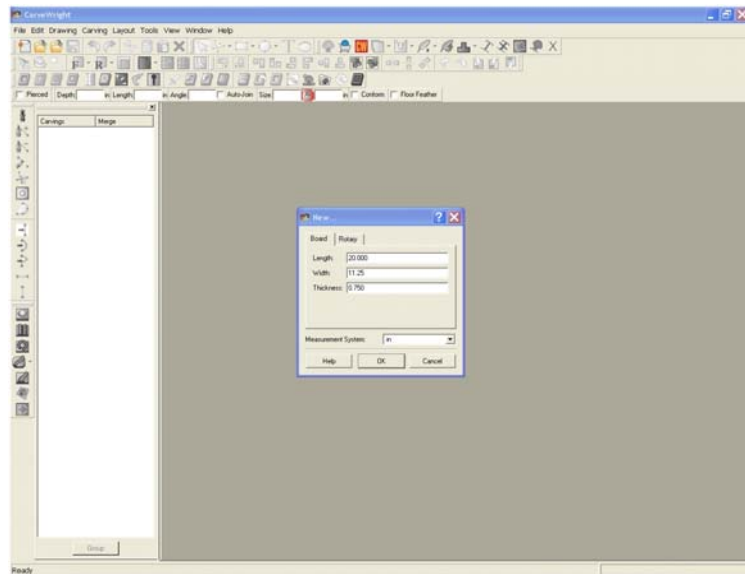
➤ SETTING UP THE DRAWING VIEW TOOLS

Under the main **Layout** drop down menu, select **Snap**. The **Snap to Grid** options window will appear. Set the snap interval to **.500"**. Select: the **Snap Objects to Grid, View Grid, and Center Grid** options.

The board will appear with the grid lines displayed for layout.

➤ CREATING THE SIGN OUTLINE

Draw a 15"x10" rectangle that is centered on the board. Draw a circle with a 3.500" radius offset from the end 1.000". Mirror the circle across the centerline. These shapes will form the outline of our sign.

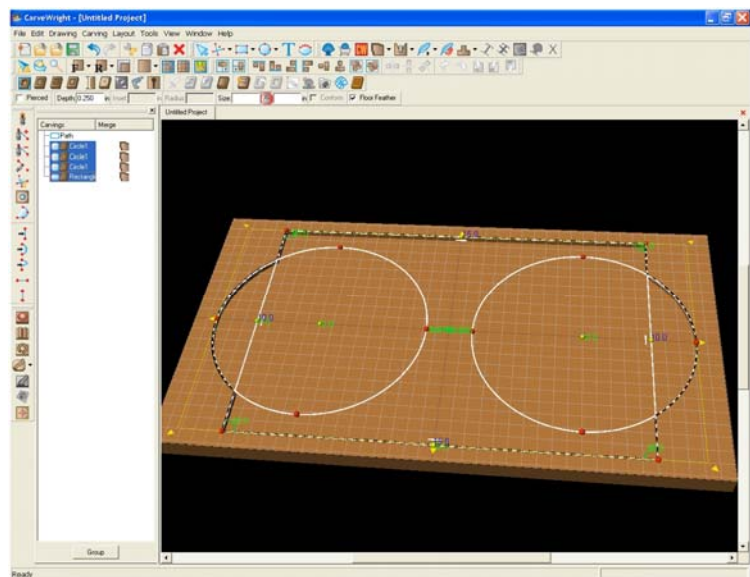
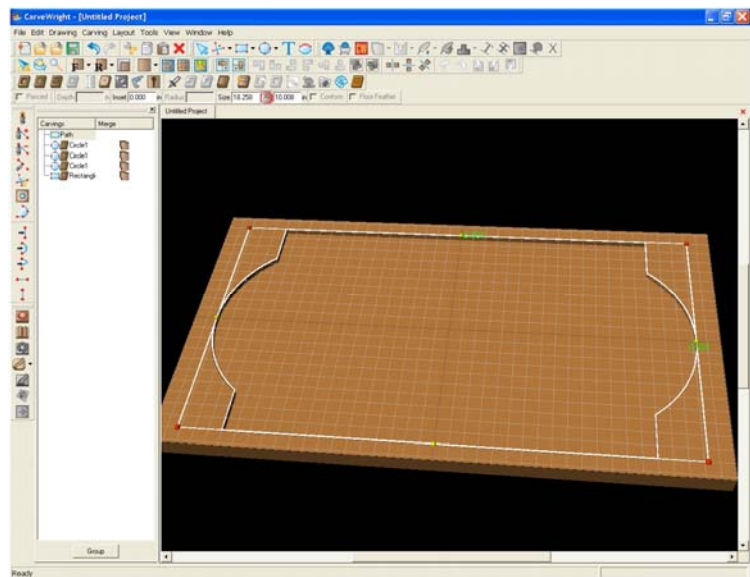
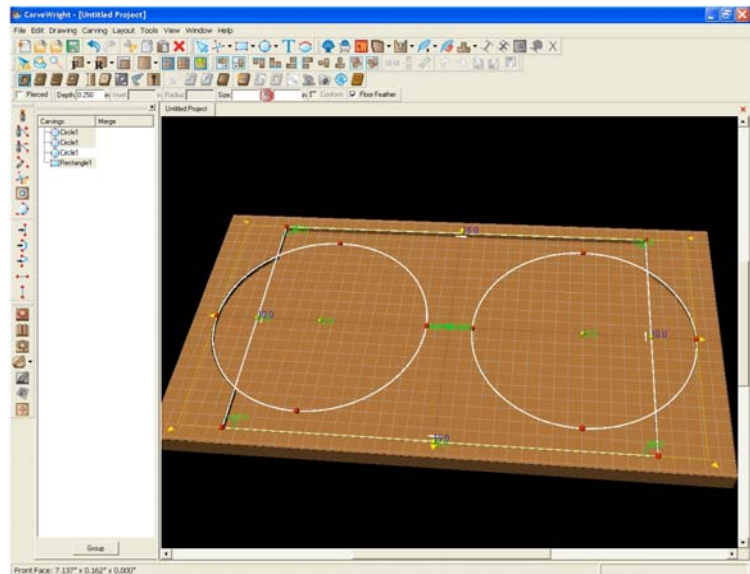


Highlight the newly drawn circles and rectangle and select the **Carve Region** icon.

A carved region will appear that encompasses the drawn figures.

With the three objects still highlighted, select the **Outline Pattern** tool. This will generate a single path that follows the outline of the region.

Select and delete the original circles and rectangle. You will be left with a single path in the carving list.



Highlight the single remaining path and select the **Cut Path** tool. Keep the 1/8" cutting bit and the default tab settings. Flip the cut to the outside of the line and select **Hide Cut-Out**.

Press **Accept** to proceed.

➤ CREATING THE SIGN BACKGROUND

With the outline now defined we can use it to define the background region.

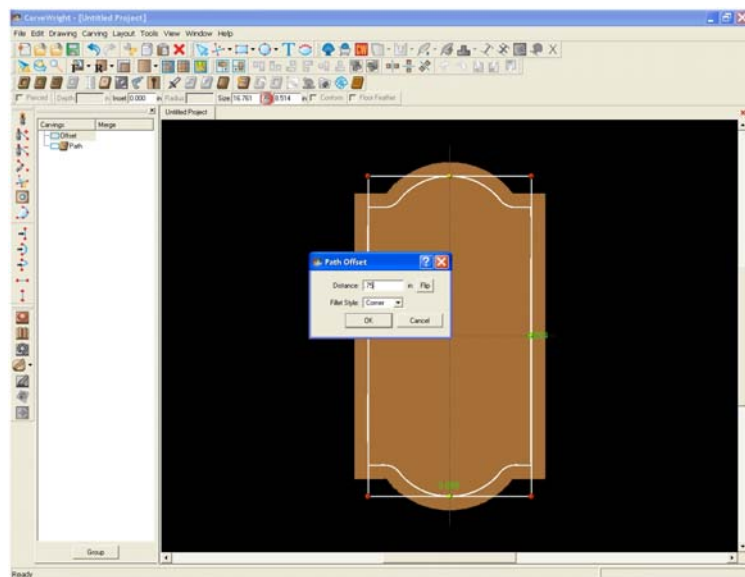
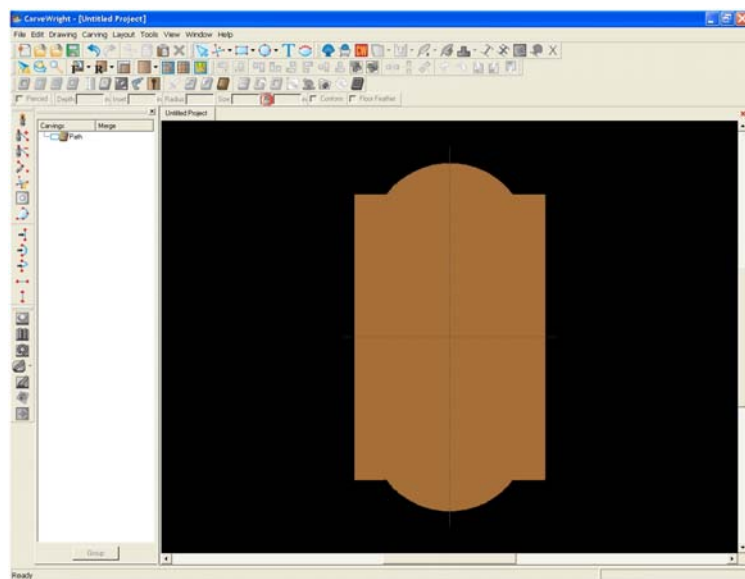
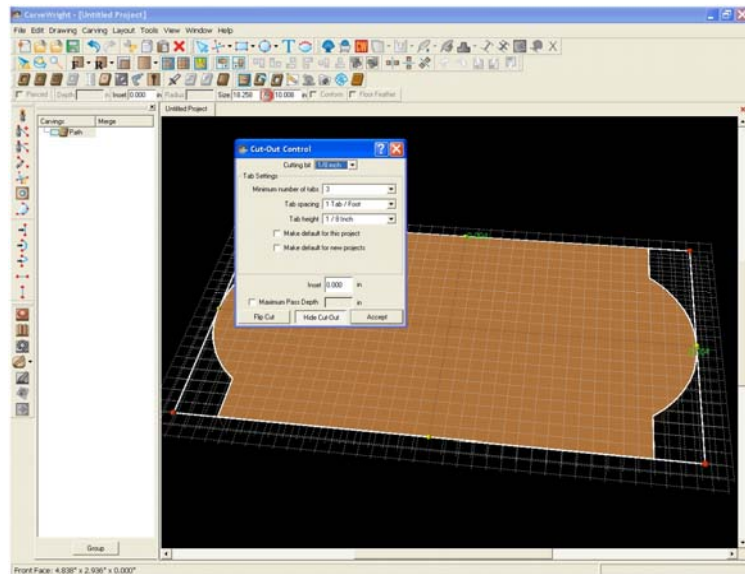
First remove the grid lines from the view by selecting **Toggle Grid Lines** from the main **View** menu.

Then reorient the sign by selecting the **Front CW** from the View options.

Highlight the previously created path for the sign outline and right click. Select **Path Offset** from the drop down menu.

Set the offset at **-.75"** and select **OK**. You can also enter **.75"** and press the **Flip** button to get the path on the inside of the outline.

Select the **Carve Region** icon and enter **.350"** for the depth.



Add a 1/4" feather the the region. Do not flip the feather to the outside so that the sharp corners are preserved.

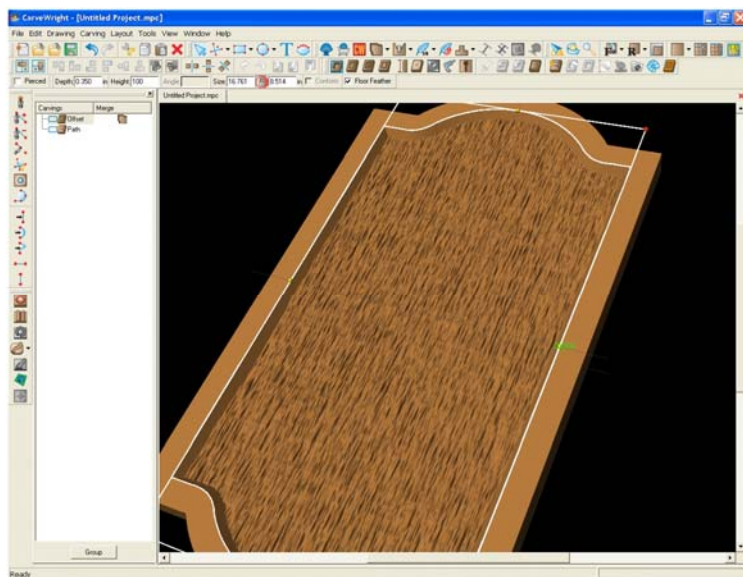
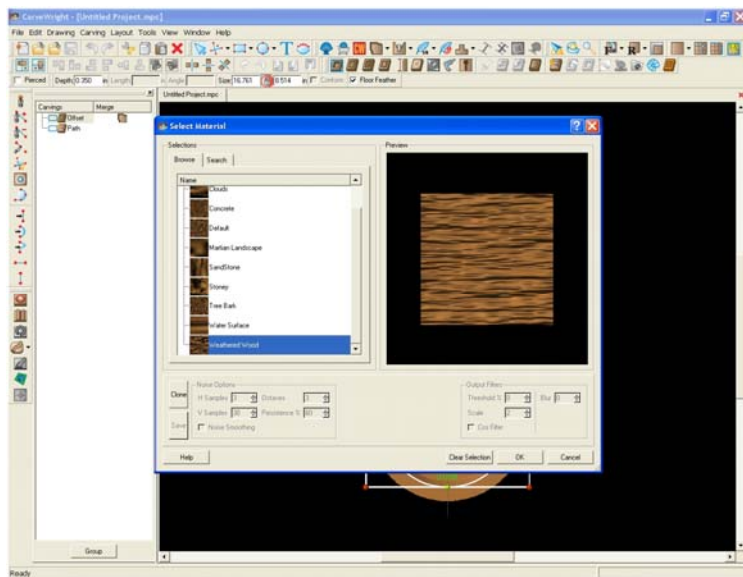
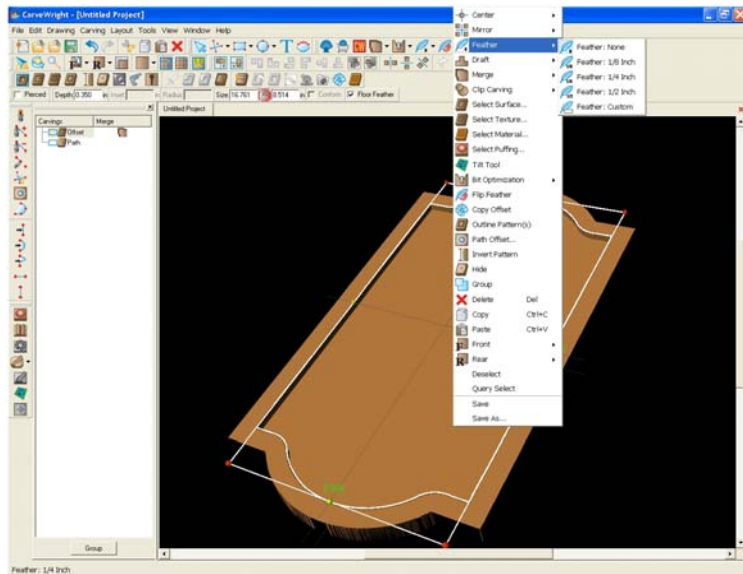
➤ **ADDING A CUSTOM MATERIAL TEXTURE TO A SURFACE**

With the carved region still highlighted, select the **Select Material** icon.



Choose the **Weathered Wood** material from the list and hit **OK**.

The texture is applied to the board at a height of 100. It is a bit too dramatic for our sign so we will reduce the texture depth.



Reduce the **Height** of the texture to 30.

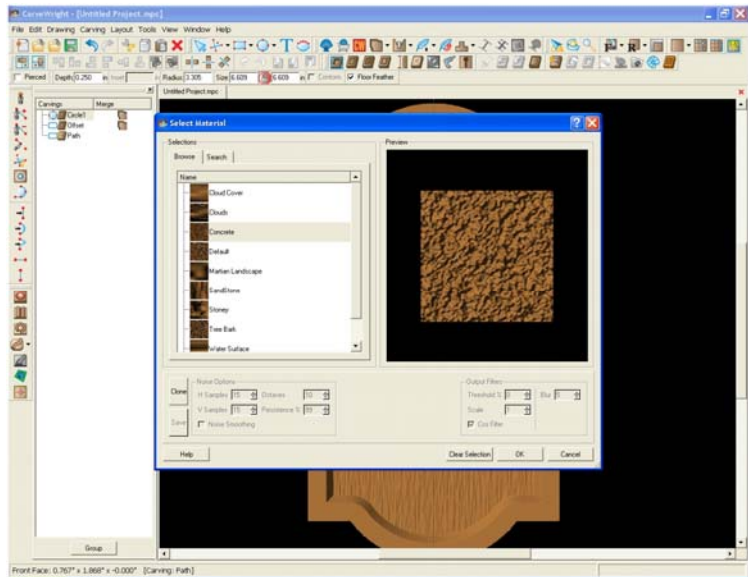
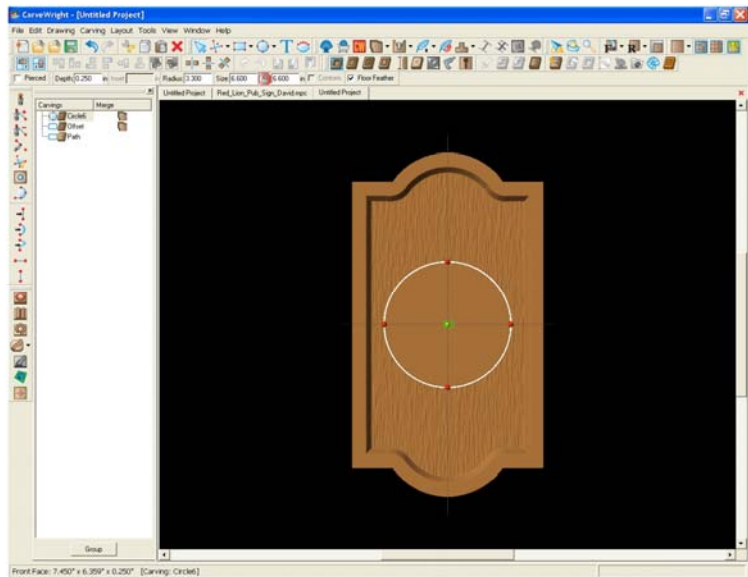
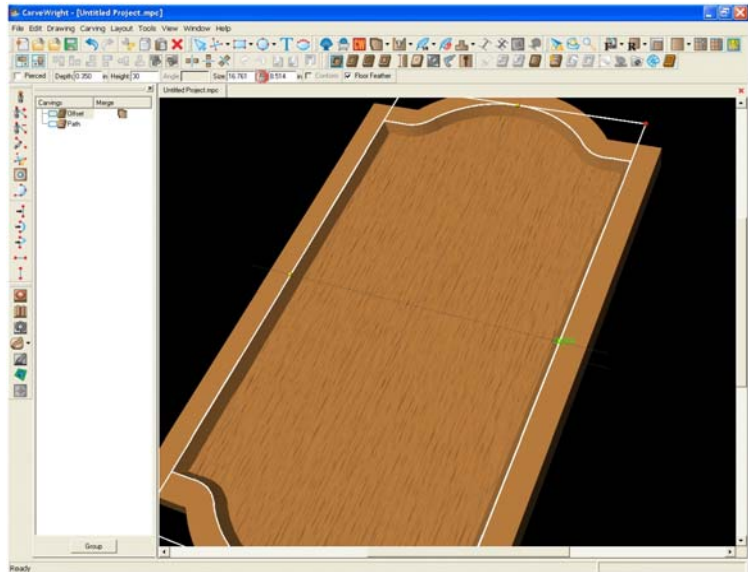
Important: Make sure that you always set the bit optimization for the material textures to **Best**.

Add a 3.300" radius circle to the board and center it in both directions. This will serve as the platform for our RED LION.

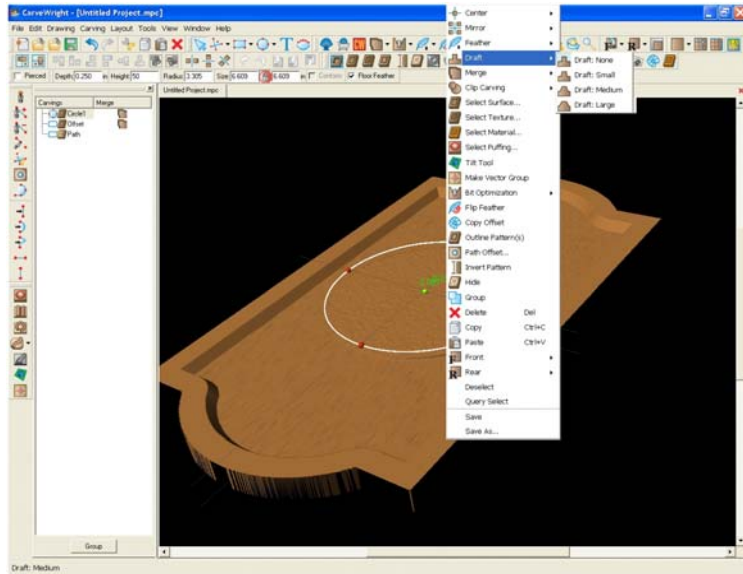
Select the **Carve Region** icon and leave the depth at .250".

Add a **Concrete** material texture to the region using the same process as the background and set its height at 50.

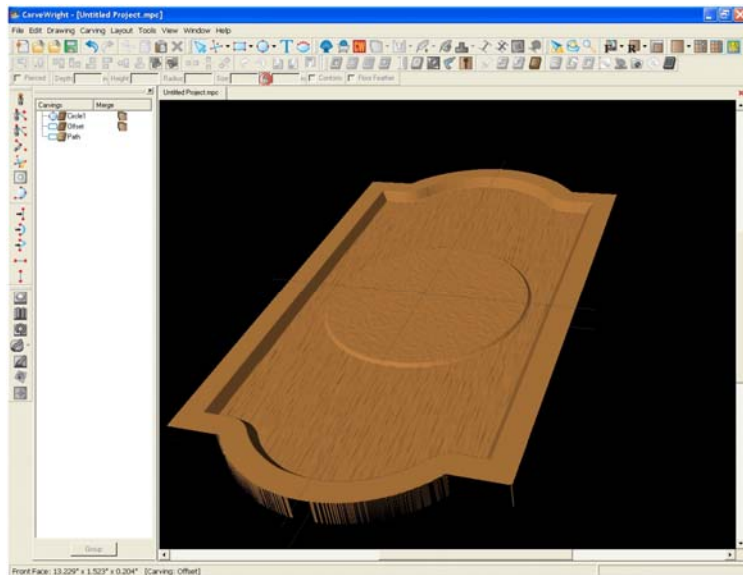
Important: Make sure that you always set the bit optimization for the material textures to **Best**.



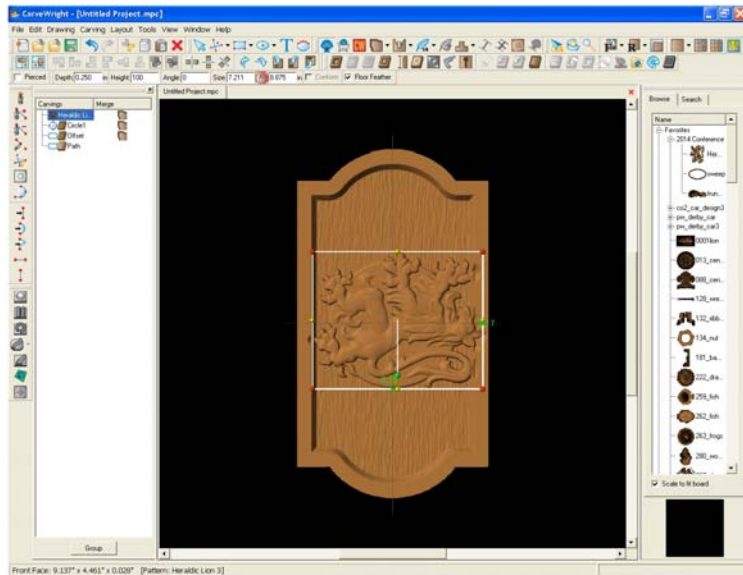
Right click on the circle and add a **Large Draft** to the circular region.



We now have a raised and textured platform on top of the weathered wood background texture.



Select the **Heraldic Lion** from pattern library. Set the lion's **Depth (.250")**, **Height (999)** and **Length (8.000")**.



Rotate the lion pattern 90 degrees, center it in both directions, and set Bit Optimization to **Best**.

➤ APPLYING TEXT

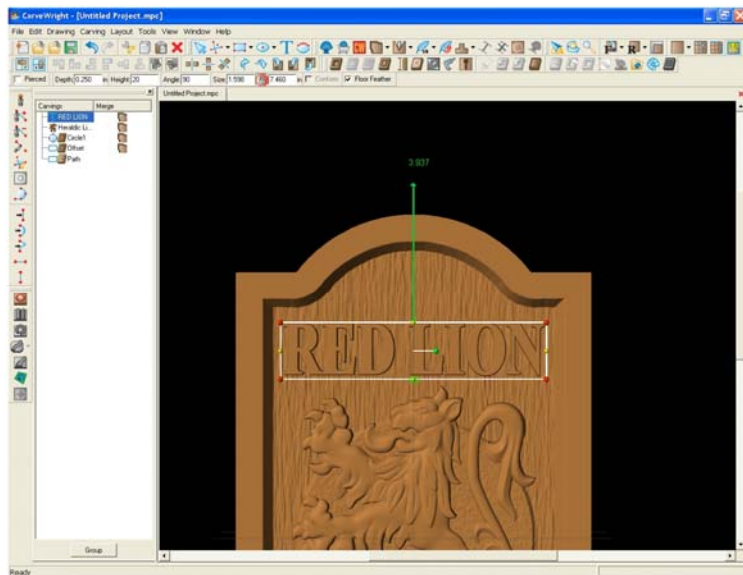
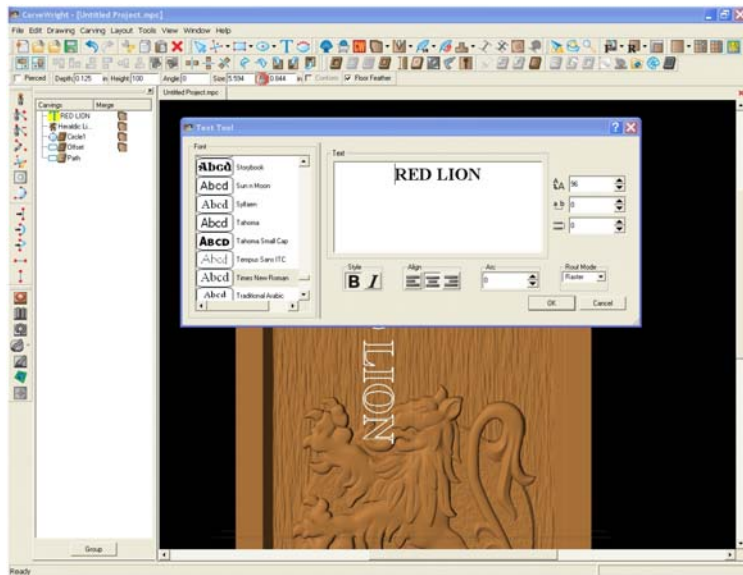
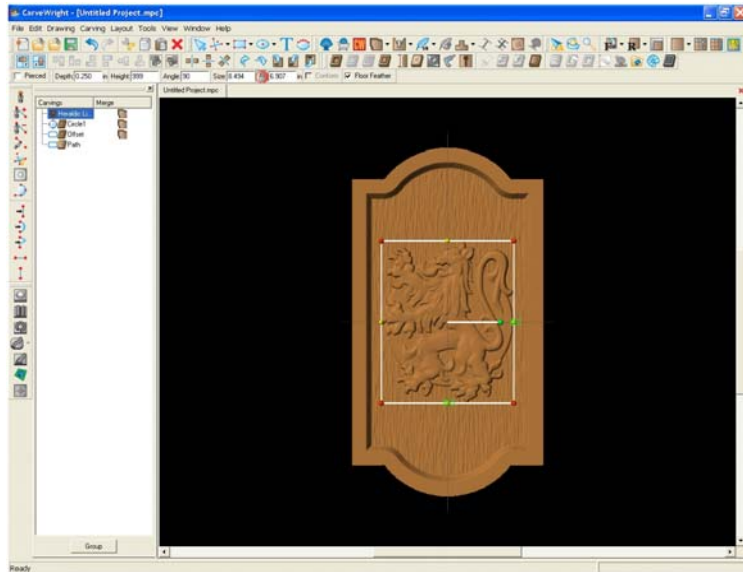
Click on the **Text Tool** icon and click on the board. The Text Tool window will appear.

Type "RED LION" into the text editor box. Select **Times New Roman** for the font style, click the **Bold** button, and click OK.

Rotate the text 90 degrees and center it. Remember that the sign has been rotated in the view so that you will need to center the text vertically and not horizontally as it appears.

Resize and stretch the text so that it fills in the area above the lion.

Set the text **Depth** to .250", the **Height** to 20, and add a **Medium** draft.



With the text still highlighted, right click and select **Copy**. Right click again and select **Paste**. A second instance of the text is placed directly on top of the first instance (you can view the second instance in the carving list).

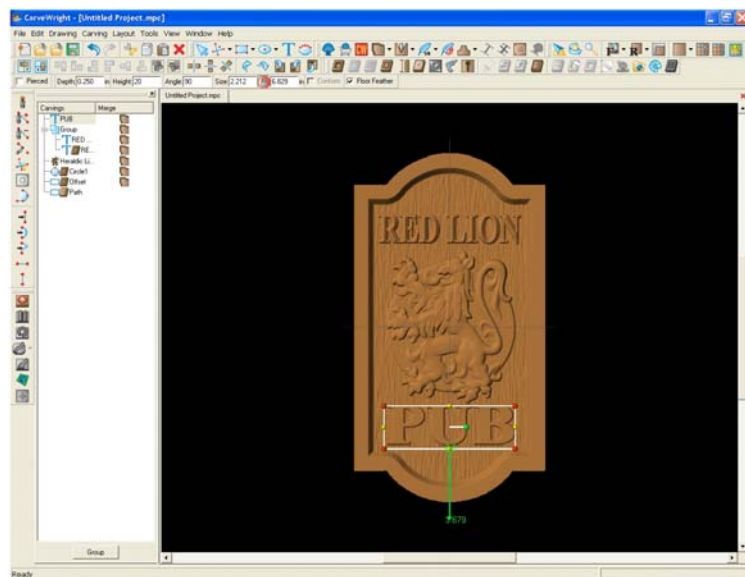
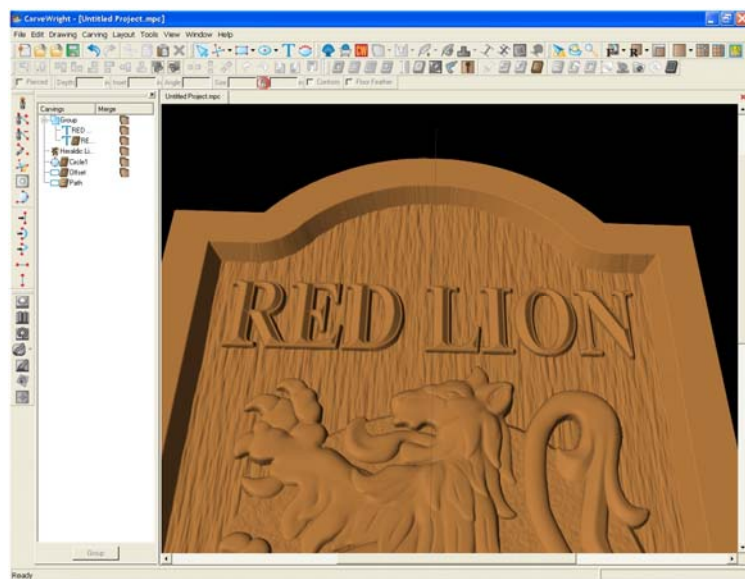
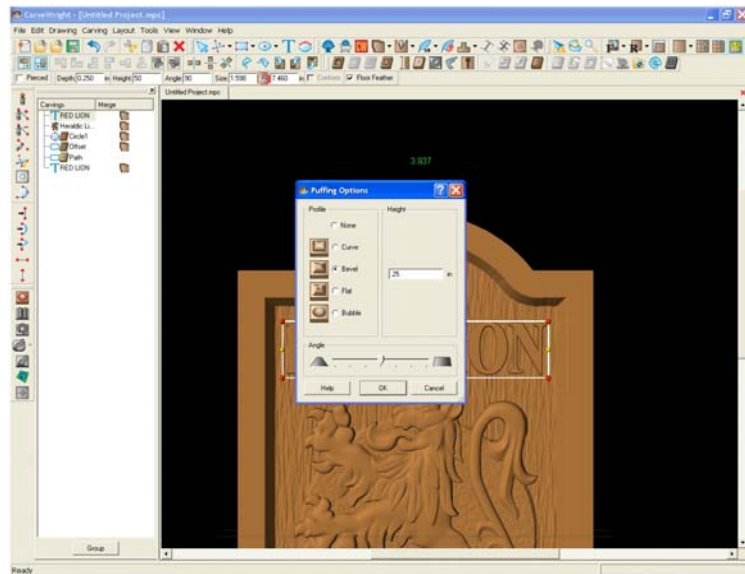
Highlight the newly pasted second instance and then select the **Puffing** tool from the 3D toolbar. Select **Bevel** from the profile box and enter .250" in the height box.

Click **OK** to proceed.

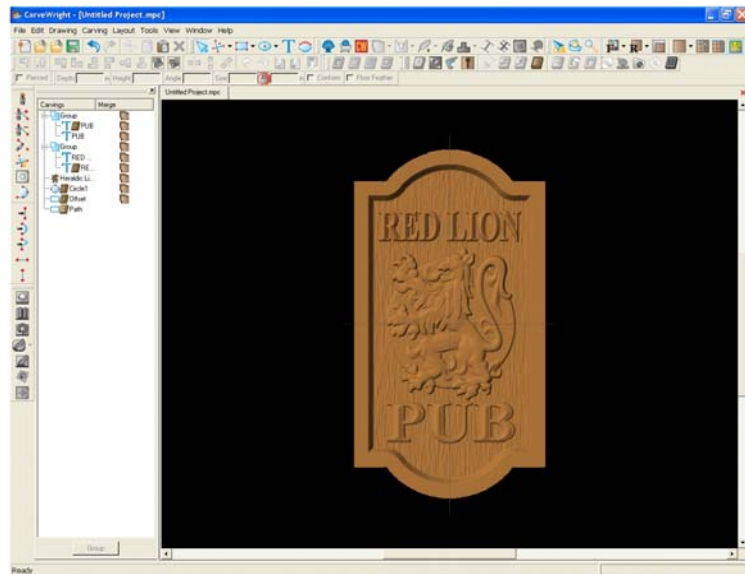
The puffed profile can now be seen on top of the first text that serves as a platform.

Change the height of the second text instance to 50. Watch as the beveled puff increases in definition.

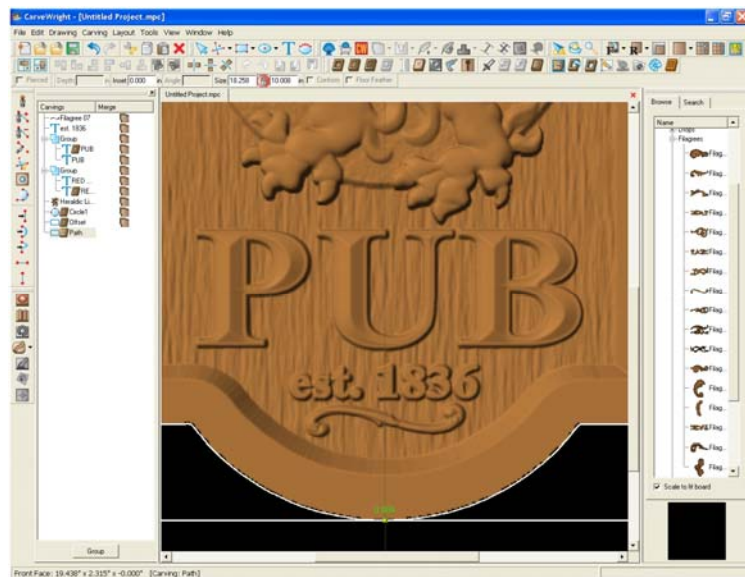
Repeat the above steps to create the puffed PUB text at the bottom of the lion.



We now have a striking layered text effect for the two largest text strings.



Add simple text "est. 1836" and the **Filagree 007** from the Basic pattern library to the bottom of the sign.

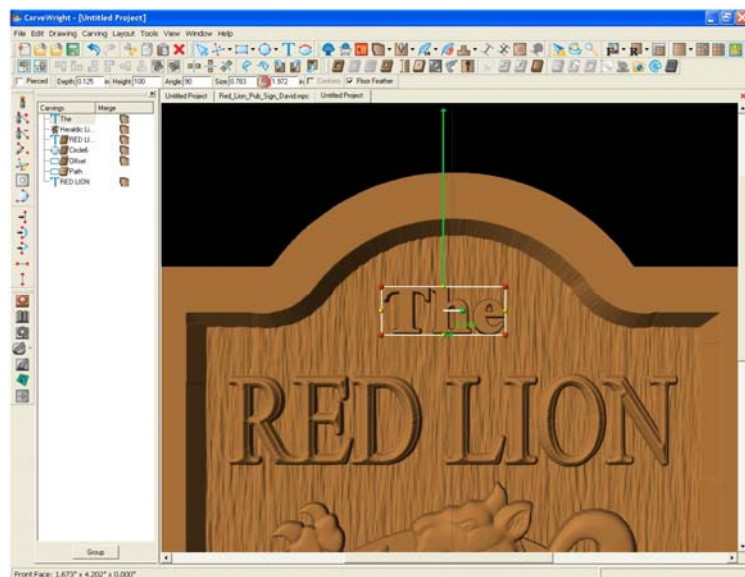


➤ DISTORTING TEXT USING THE EDIT ENVELOPE TOOL

Using the **Text Tool** add the word "The" to the top of the board. Select **Times New Roman** for the font style and make it bold.

Rotate the text 90 degrees and center it.

Set the text **Depth** to .350" and add a **Medium** draft.



With the text highlighted, select the **Edit Envelope** tool.

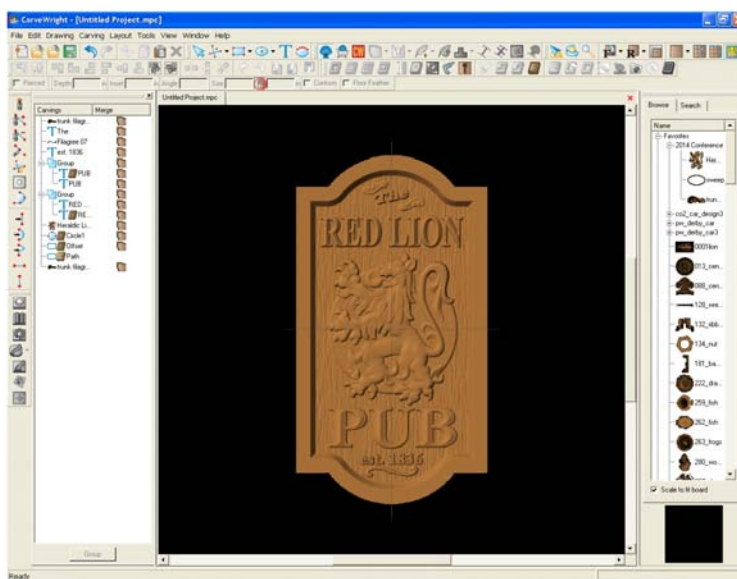
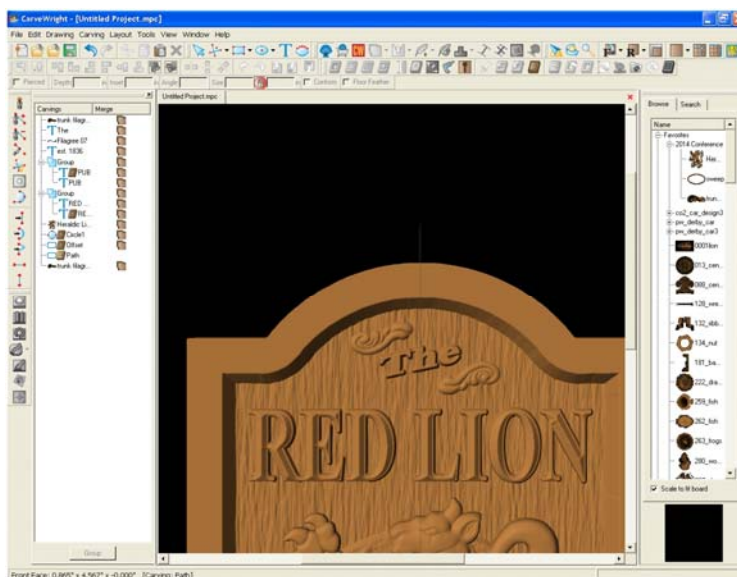
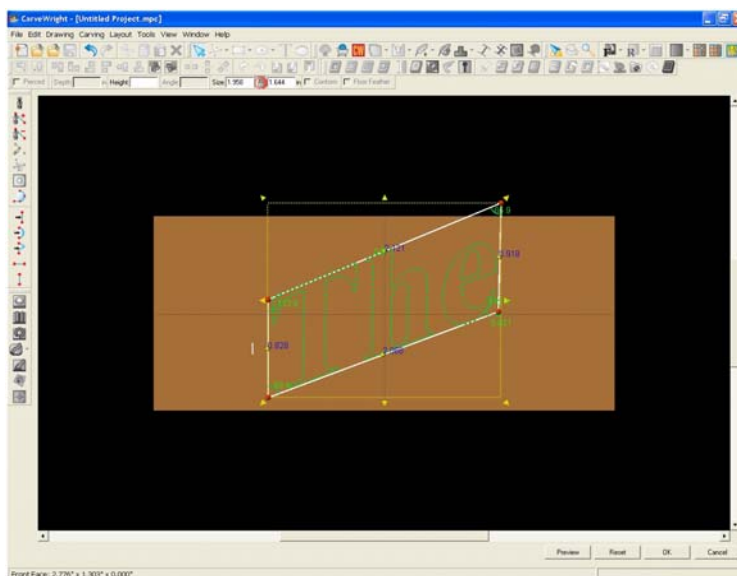
A new window will appear showing the outline of the selected text in green.

Drag the control point of the text bounding box to warp the shape as desired.

The bounding box edges can also be changed from lines to arcs and splines to allow an entire range of warping options.

Press **Preview** to view the finished text or **OK** to move back to the board view.

Add two Filagrees to bound the text. Set the **Depth** to .300" and **Height** to 150.



Select "File", "Save"

*****IMPORTANT*****
Name file and click "Save"
to hard drive.



Select "File", "Upload"
Save to memory card.