

This project covers the following design concepts:

- ✓ STARTING SOFTWARE
- ✓ DOWNLOAD PATTERN
- ✓ INSTALL PATTERN
- ✓ ACTIVATE PATTERN
- ✓ PATTERN PLACEMENT
- ✓ VIEW GRIDLINES
- ✓ CENTER HORIZONTALLY
- ✓ MANIPULATE VIEW
- ✓ FINE TUNING
- ✓ CARVING LIST
- ✓ OUTLINE PATH
- ✓ CARVE REGION
- ✓ SNAP TO GRID
- ✓ DRAWING TOOLS
- ✓ SELECT TEXTURES
- ✓ GROUPING
- ✓ MERGE ADDITIVE
- ✓ CUT PATH
- ✓ SAVE & UPLOAD



## INSTRUCTIONS:

### ✓ STARTING THE SOFTWARE

Open the CarveWright Project Designer Software

\*\*\*\*\*PLEASE NOTE\*\*\*\*\*

*Since, we are going to be messing with licenses, open with “Run as Administrator”, if using Win 7 or 8.*

*The Welcome screen appears with Options – New Project; Last Project; Open Project or Documentation*

Select “New Project”

Set your project board dimensions.

Length: 20”

Width: 11”

Thickness: .75”

Click OK

*Determining board length: finished, virtual or actual board. See 7” Rule in Tips & Tricks – “Handy Tips for Everyone! – ISSUE 3 December 2007”*

### ✓ DOWNLOAD PATTERN

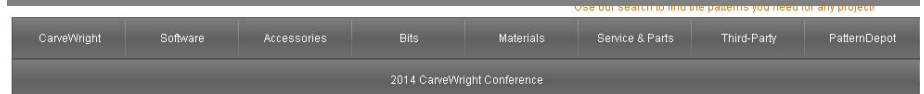
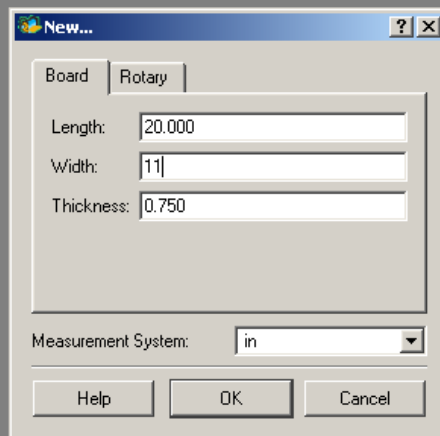
3 ways to Download a Licensed Pattern:

1. Click the green TRY
2. Click on Download link in email
3. Log into Customer Account and click on DOWNLOAD PATTERN link

PAY ATTENTION TO WHERE YOU ARE PUTTING THE PATTERN

*Downloads typical go into your “Downloads” folder, unless you specifically direct it to another folder or to your DESKTOP.*

*16 BIT refers to a higher resolution pattern.*



Home ▶ PatternDepot ▶ Patterns ▶ Plantlife ▶ Flowers ▶ Allamandra



#### Allamandra

Allamandra

Like 0 Tweet 0 +1 0 Pin it

Our price: \$5.00 more products by:

Quantity 1 (this product is downloadable)

SKU 0002-01-0002838

Add to cart

Try

Add to wish list

Ask a question about this product

Be the first to review/rate this product

VectorArt 3D

## ✓ INSTALL PATTERN

In Designer Software, Go to FILE > OPEN

Navigate to where you downloaded the pattern.

*Again, it usually goes to your DOWNLOADS FOLDER. You may want to sort that folder by Date Modified ↓ for most recent download.*

*Numbers after it in parenthesis means you have downloaded it before.*

Select the pattern (.ptn) and Open.

*Pattern will open in an Import Image window.*

Select "Finish", then "Next".

*You do not need to make any adjustments to a licensed pattern or rename them. It will be put into your FAVORITES folder in the Pattern Library Tool. (Blue Shell)*

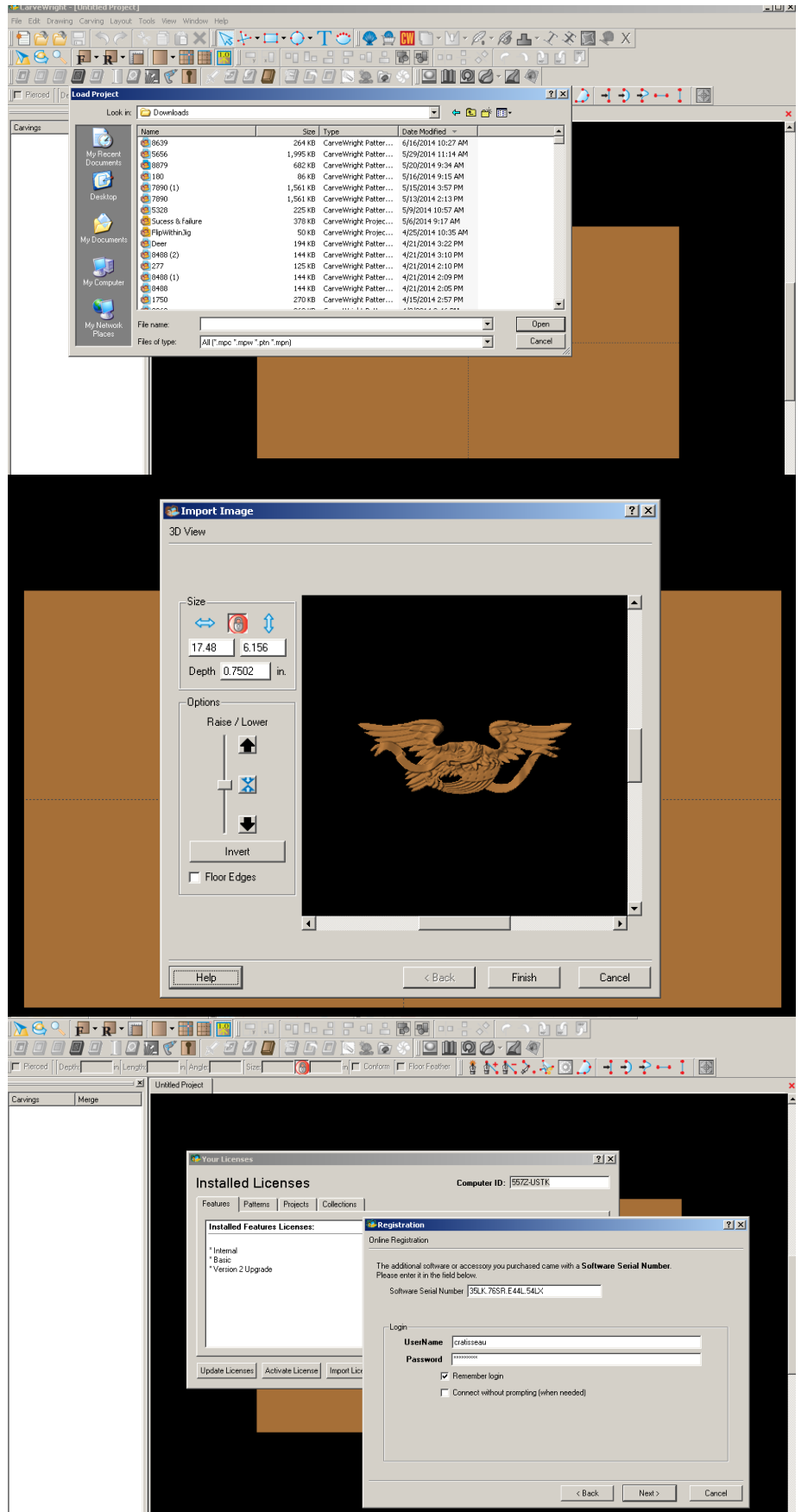
## ✓ ACTIVATE LICENSE

Go to HELP > MANAGE LICENSES > ACTIVATE LICENSE

Select "License Online Now"

Enter Serial Number with capital letters and decimal points. It will be in the follow format using both letters & numbers. XXXX.XXXX.XXXX.XXXX

Customer Account Username & Password Required.



## ✓ PATTERN PLACEMENT



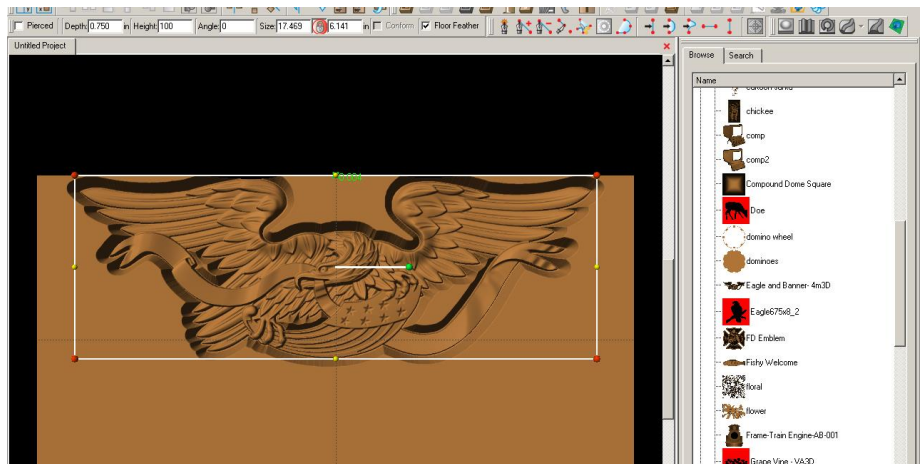
### Open Pattern Library

Notice in Pattern Library:

Red background = unlicensed.


White background = licensed or licensed not required.

Place “Eagle & Banner – 4m3d” pattern onto board by clicking and dragging to the board or by clicking ONCE on pattern to select and ONCE on board to place .



Conference attendees received this pattern complimentary from one of our Sponsors - CNC Mini Projects. Please contact LHR Technologies to find out how you can purchase this pattern.

## ✓ VIEW GRIDLINES


Go to Icon  or VIEW menu > Toggle Gridlines.

To set the interval of the gridline, go to LAYOUT > Snap and set interval to .5”.



Move your pattern down from top at least ½”. *This is to avoid contact with tracking roller unless you are going to use a sled. See Tips & Tricks – “Carving Jigs – Carrier Boards, Sleds and Rails – ISSUE 7 April 2008”*

Select Toggle Gridlines, again, to turn it off.

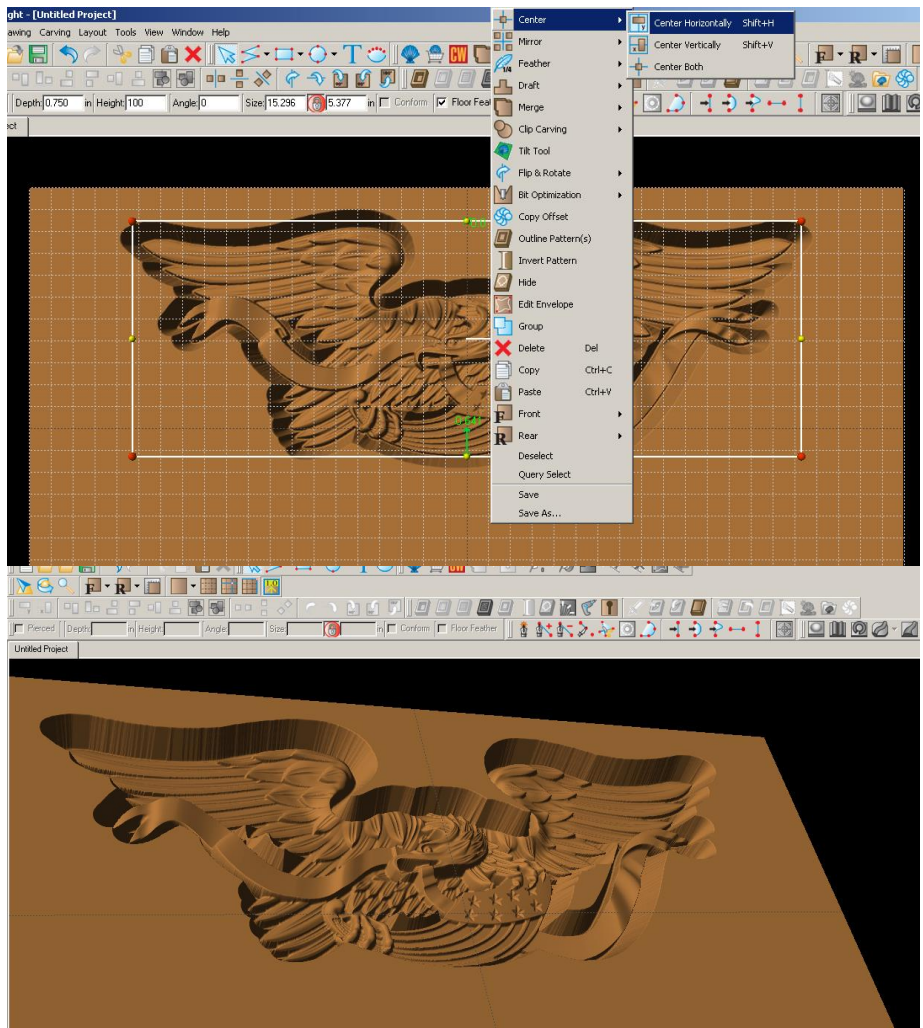
## ✓ CENTER HORIZONTALLY

Right click on element to see available options for this pattern. Select Center > Center Horizontally. 

## ✓ MANIPULATE VIEW

Zoom  and Rotate  board to get a better view of your pattern and what fine tuning needs to be done, such as depth, height, peaks, & draft.

Mouse with roller wheel can be used for this too. Use **F** to go back to front view.



## ✓ FINE TUNING

Resize pattern to 14.5" length.

Change Depth to .25".

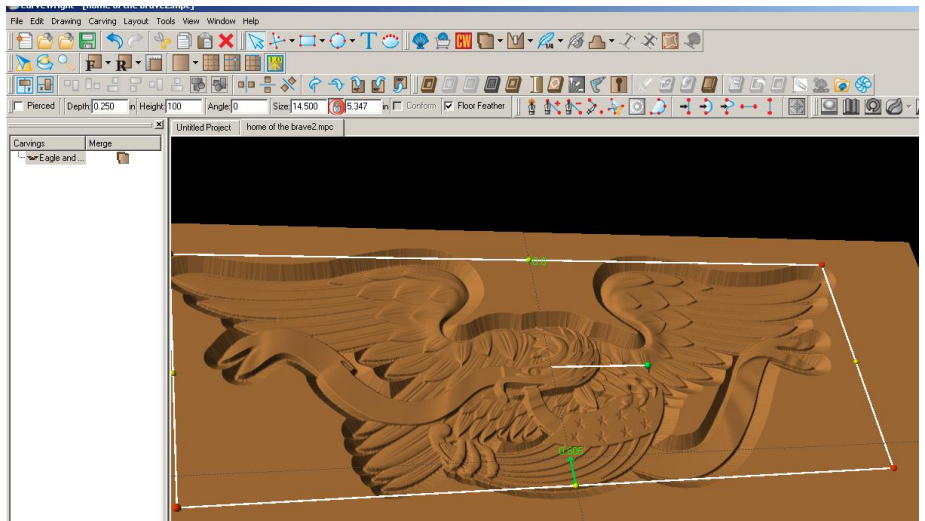
Add Draft to medium.

Add Bit Optimization to Pattern

## ✓ CARVING LIST

Open your Carving List, if it is not by going to VIEW > CARVING LIST.

*Carving List shows every element on that side of the project board.*




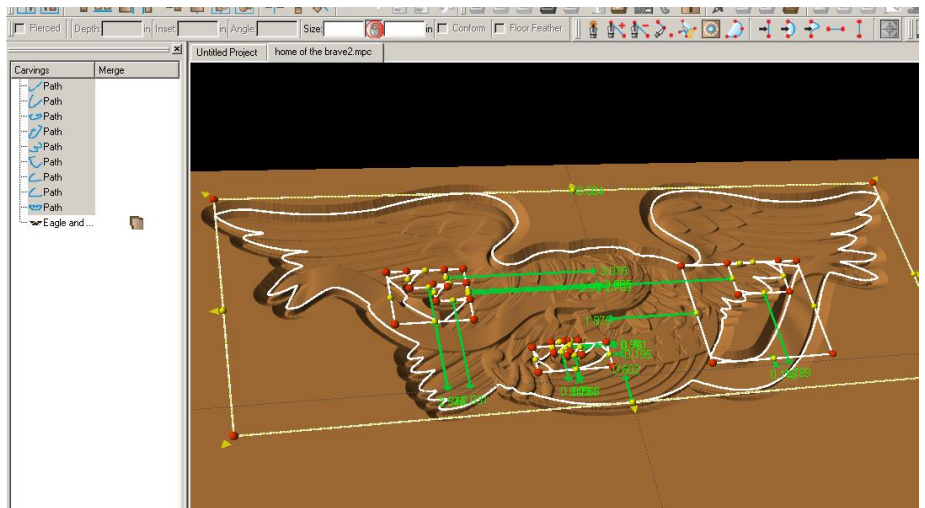
## ✓ OUTLINE PATH

*Removing the peaks in the open areas of the pattern can be done a couple of ways.*

Right click on pattern and select OUTLINE PATH.

Delete all paths from Carving List, except main eagle path.

Hit Delete key to delete them from the Carving List and your project board or select the delete icon. 

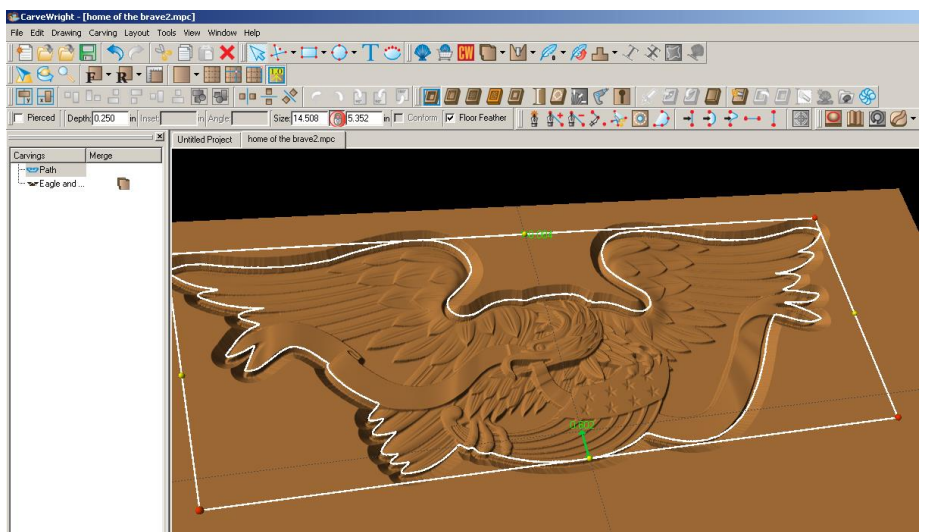


## ✓ CARVE REGION

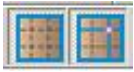


Select the eagle path  
Click the carve region tool.

*It will default to .25", which is the current depth of our pattern taking away the peaks in our open areas of the pattern.*



## ✓ GRIDLINES & SNAP TO GRID



Toggle on your Gridline

Toggle on your Snap to Grid

## ✓ DRAWING TOOLS

Select Connected Line tool



Draw an area that includes the paths inside the pattern.

Leave enough room for .5" border at bottom.

Make sure you get the "starburst" when connecting final point.

Notice when you have a "CLOSED REGION", icons like carve region and cut path are no longer grey. This indicates that they are available for use with the element currently selected.

Assign a CARVE REGION and leave at .25".

Add medium Draft to region.

## ✓ SELECT TEXTURES

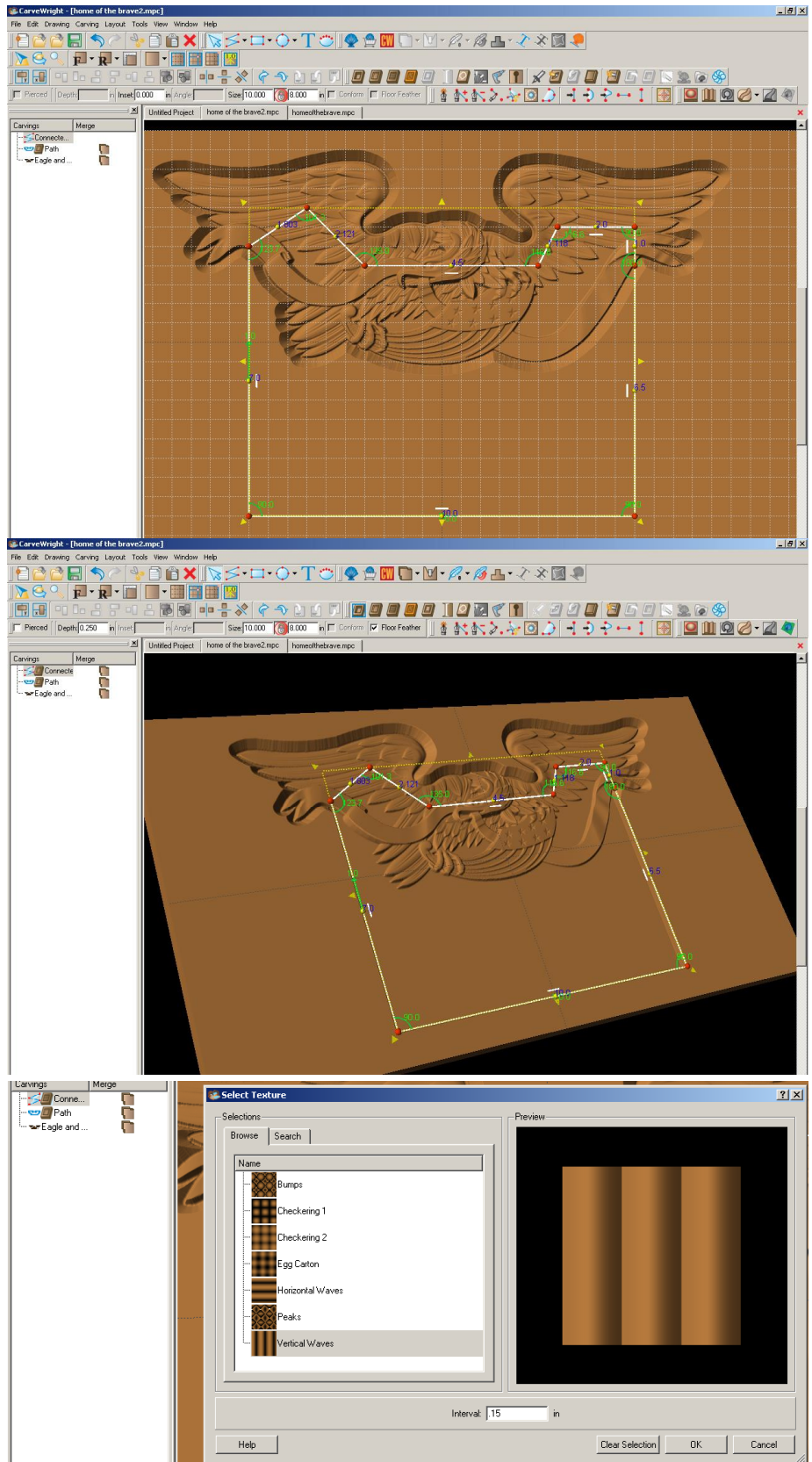


Click on the Select Textures tool.

Select Texture to use.

Change the interval of pattern to .15"

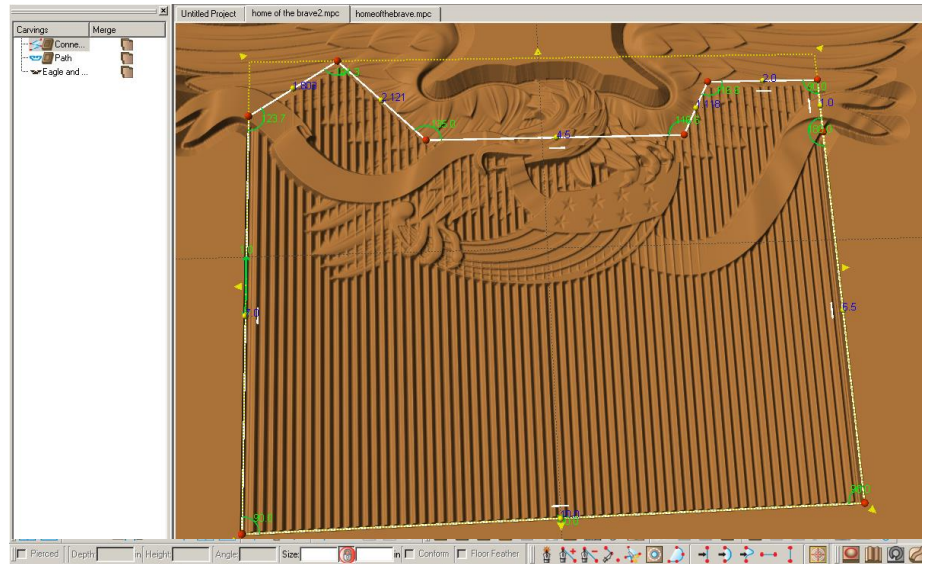
Click OK



✓ HEIGHT

*Notice how the vertical texture interferes with the pattern.*

Change the height to 10 for subtle effect and pushes it below the main pattern.

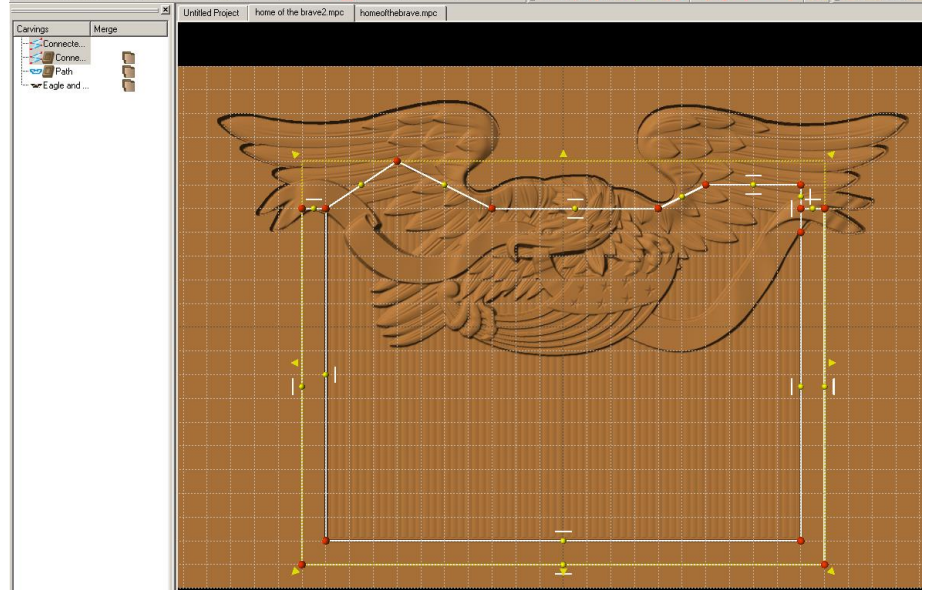


## ✓ DRAWING TOOLS

Turn back on Gridlines. Snap to grid should still be set.

Select Connected Line tool to draw .5 outside of textured carve region. Follow the line of the top of the first box where it goes through the eagle pattern.

Make closed region with “starburst”.



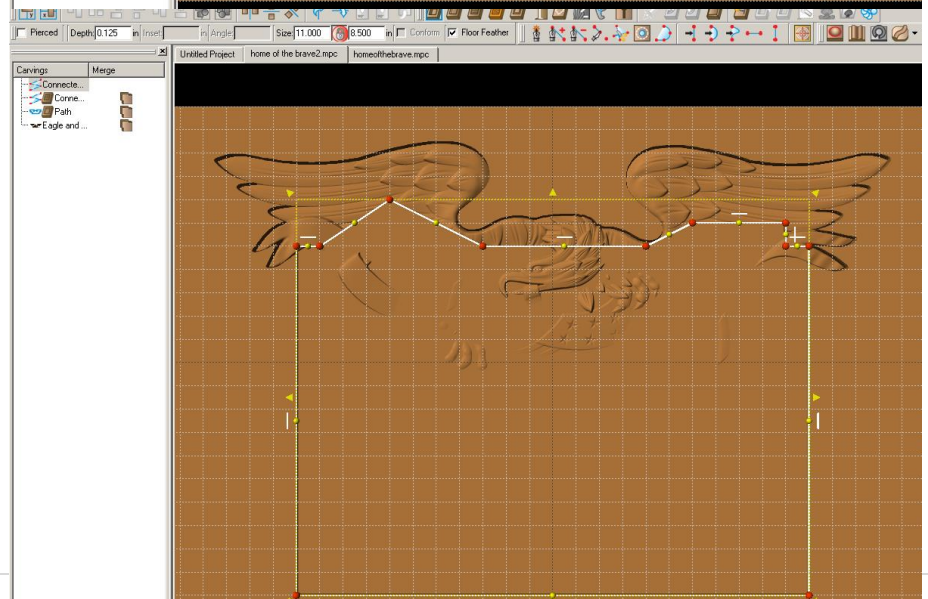
✓ CARVE REGION

Select CARVE REGION

Change depth to .125" to put below banner of pattern, but above textured middle to give a border to our project.

*Notice how the pattern and middle panel is overwhelmed, again, by the carve region.*

Toggle Gridline off.



## ✓ GROUPING

Select the two connected line areas that we want to merge.

Right click and select Group, so that the merge does not affect other elements.

## ✓ MERGE ADDITIVE



Click on the Merge Additive icon of the outside Connected Line region.

*Merge sets the conditions on how patterns or surfaces overlap one another.*

## ✓ CUT PATH



Select Path of eagle & outside Connected Line.

*Drawing tools must have carve region assigned to them. You can add a carve region, outline element, then remove the carve region after you have the path.*

Right click and select OUTLINE PATTERNS.

Flip Cut to outside of path and accept.

Customize with text.

## ✓ SAVE & UPLOAD TO CARD

Select "File" > "Save"



### \*\*\*\*\*IMPORTANT\*\*\*\*\*

**Once a project is uploaded to a memory card, it cannot be brought back from the memory card into the software. Always SAVE YOUR PROJECT on your hard drive. A Projects folder is recommended and you should know where you saved it.**

## ✓ UPLOADING TO MEMORY CARD



Make sure your Memory Card & Programmer are properly attached via your USB port, Select "File" > "Upload" to save to your memory card.

Select Quality Setting > Name Your Project > Click "Upload"

