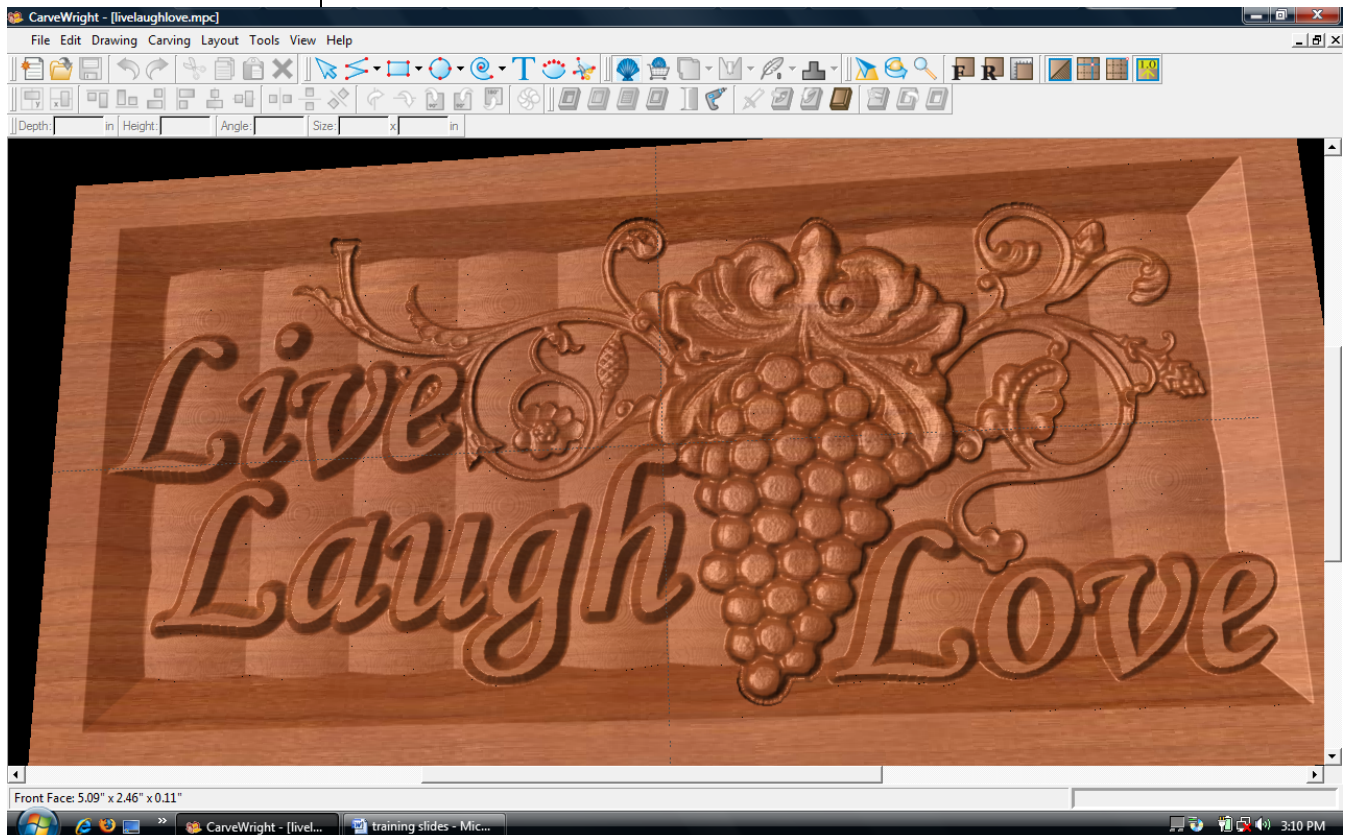


Design Project 2

This project covers the following design concepts:

- PATTERN PLACEMENT
- PATTERN MANIPULATION
- FINE TUNING
- ADJUSTING DEPTH & HEIGHT
- TEXT TOOL
- DRAWING TOOLS
- REGIONS
- TEXTURES
- CARVING OPTIMIZATION
- FEATHERING
- DRAFT
- CARVING LIST
- BOARD SETTINGS
- MANAGING DATA
- UPLOADING TO MEMORY CARD
- QUALITY SETTINGS



INSTRUCTIONS:

➤ STARTING THE SOFTWARE

Open the CarveWright Designer Software

The Welcome screen appears with project options.

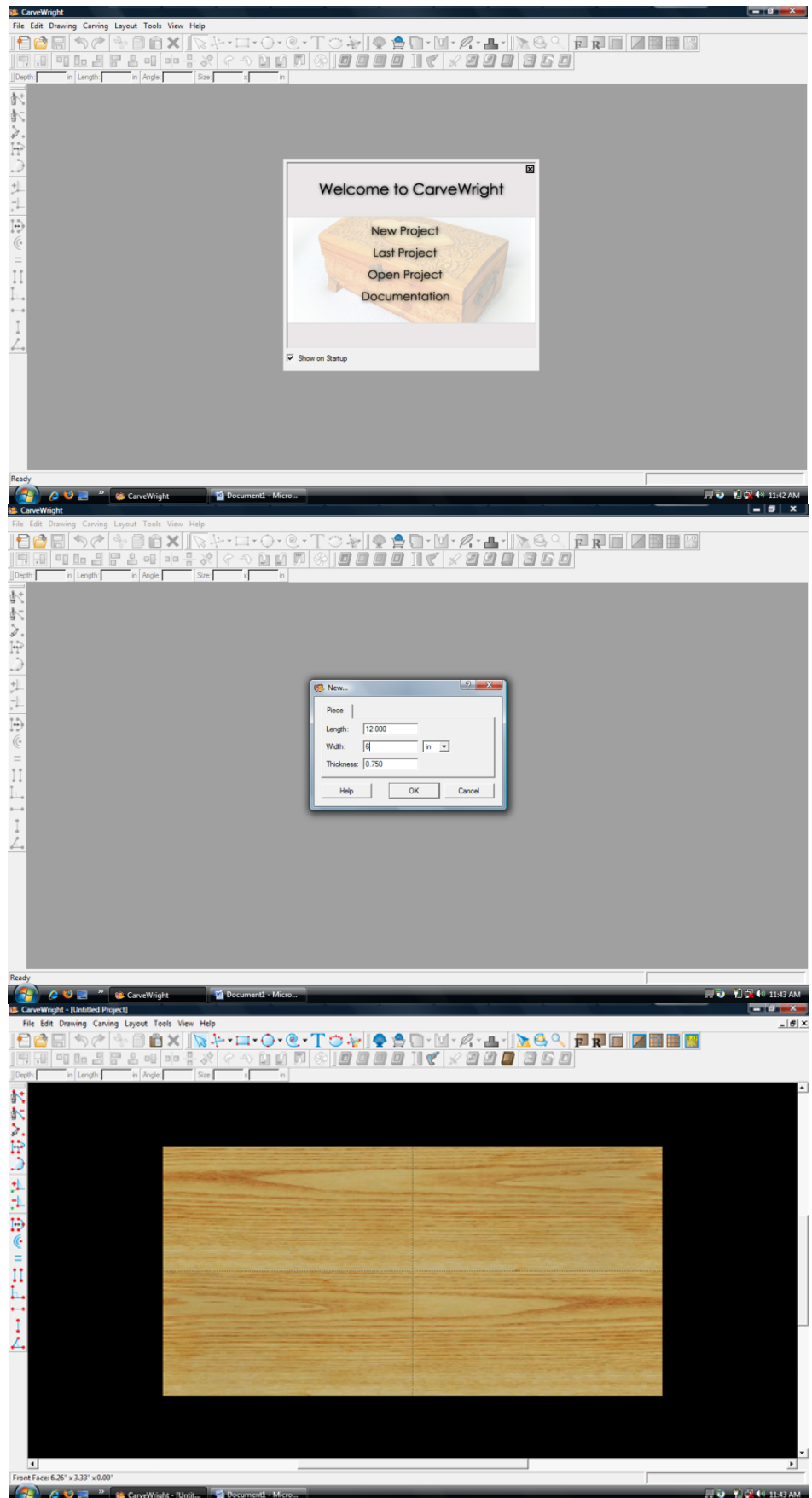


Select "New Project"

Set your board piece dimensions.
Length: 12"
Width: 6"
Thickness: .75"

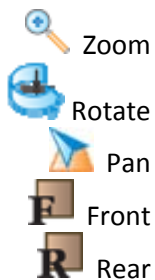
Click ok

➤ MENUS, TOOLBARS OR MOUSE



➤ MANIPULATING THE WORKPIECE

Board piece will display on screen in three dimensions.



➤ PATTERN PLACEMENT

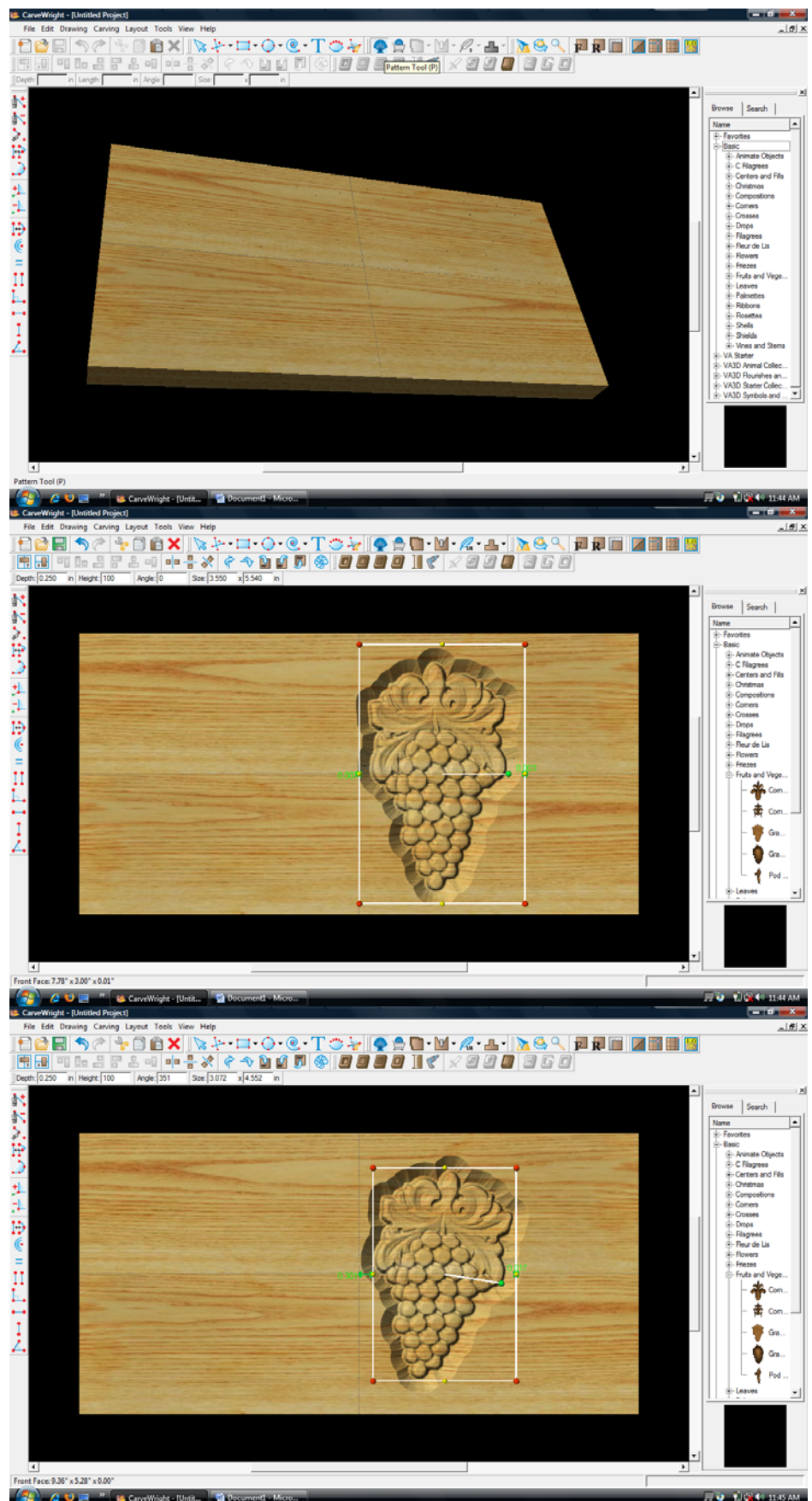
Select the “pattern tool” to open the pattern library along the right side.

Select “Grapes01” under “Fruits and Vegetables” in the Basic Library. Click on board to place.

➤ PATTERN MANIPULATION

Use Red Nodes on the corner to Scale the pattern.

Also, use the Green Node to Rotate the pattern



➤ PATTERN PLACEMENT & MANIPULATION

Adding Additional Patterns



Select “Vine04” under
“Vines and Stems” in the
Basic Library. Drag and
drop it onto the board.

Rotate and scale to fit with
other pattern.

*****IMPORTANT*****

Notice how the patterns
overlap. The stem of the
vine is surfacing through
the grape pattern.

➤ FINE TUNING

To fix this we will adjust the
depth and height.

➤ ADJUSTING DEPTH

Select grapes and change
depth to “.125” or “1/8”
inch.

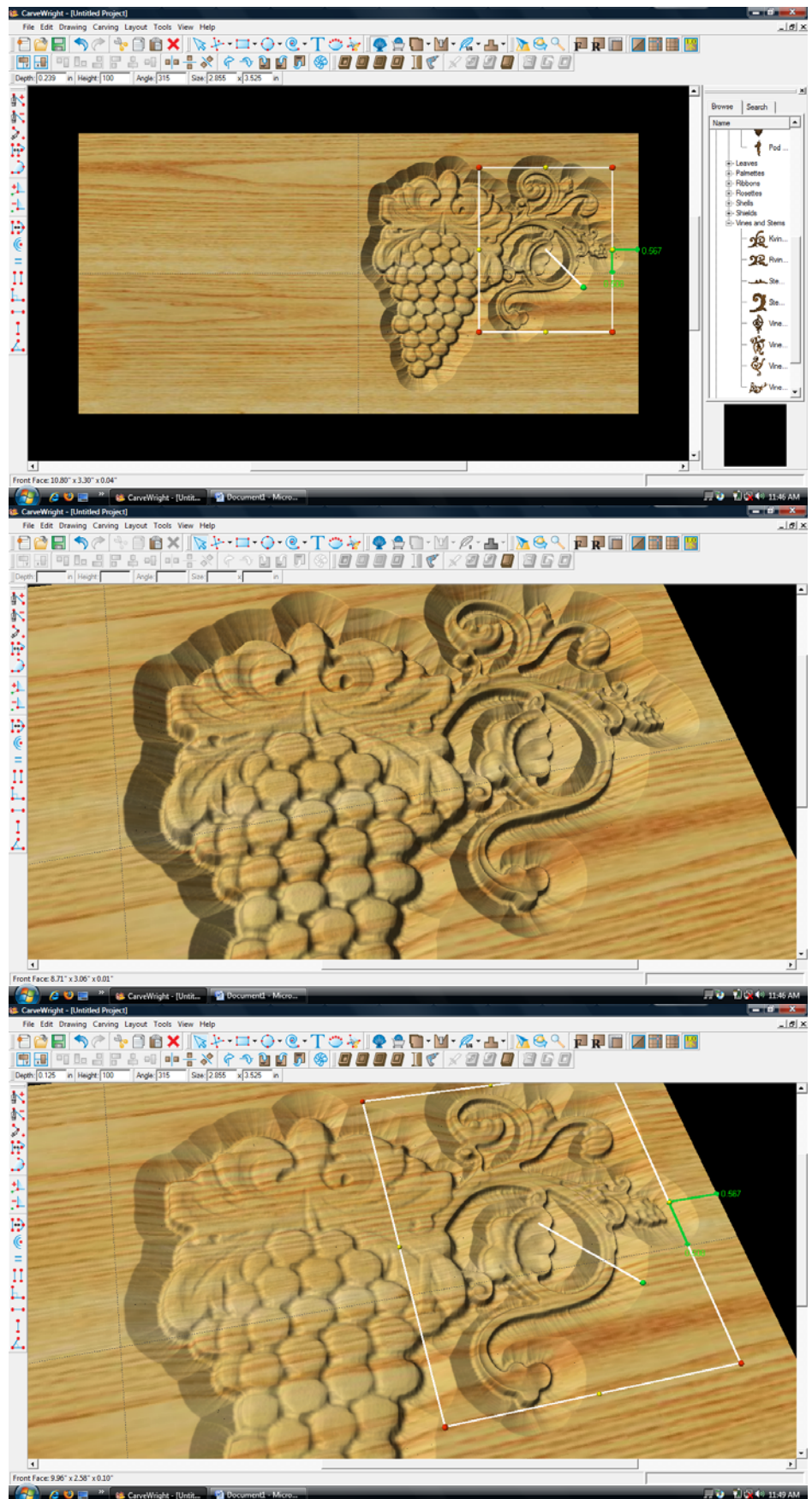
Change the vine depth to
“.125 or 1/8” inch. This
shallows the entire design
for faster carving, but does
not fix the overlap.

➤ ADJUSTING HEIGHT

Select the vine pattern and
adjust the Height to “30”.

This lowers the overall
thickness of the pattern.

Notice the stem is gone.



➤ BOARD SETTINGS



Use “Toggle Texture” to remove wood grain for better viewing.



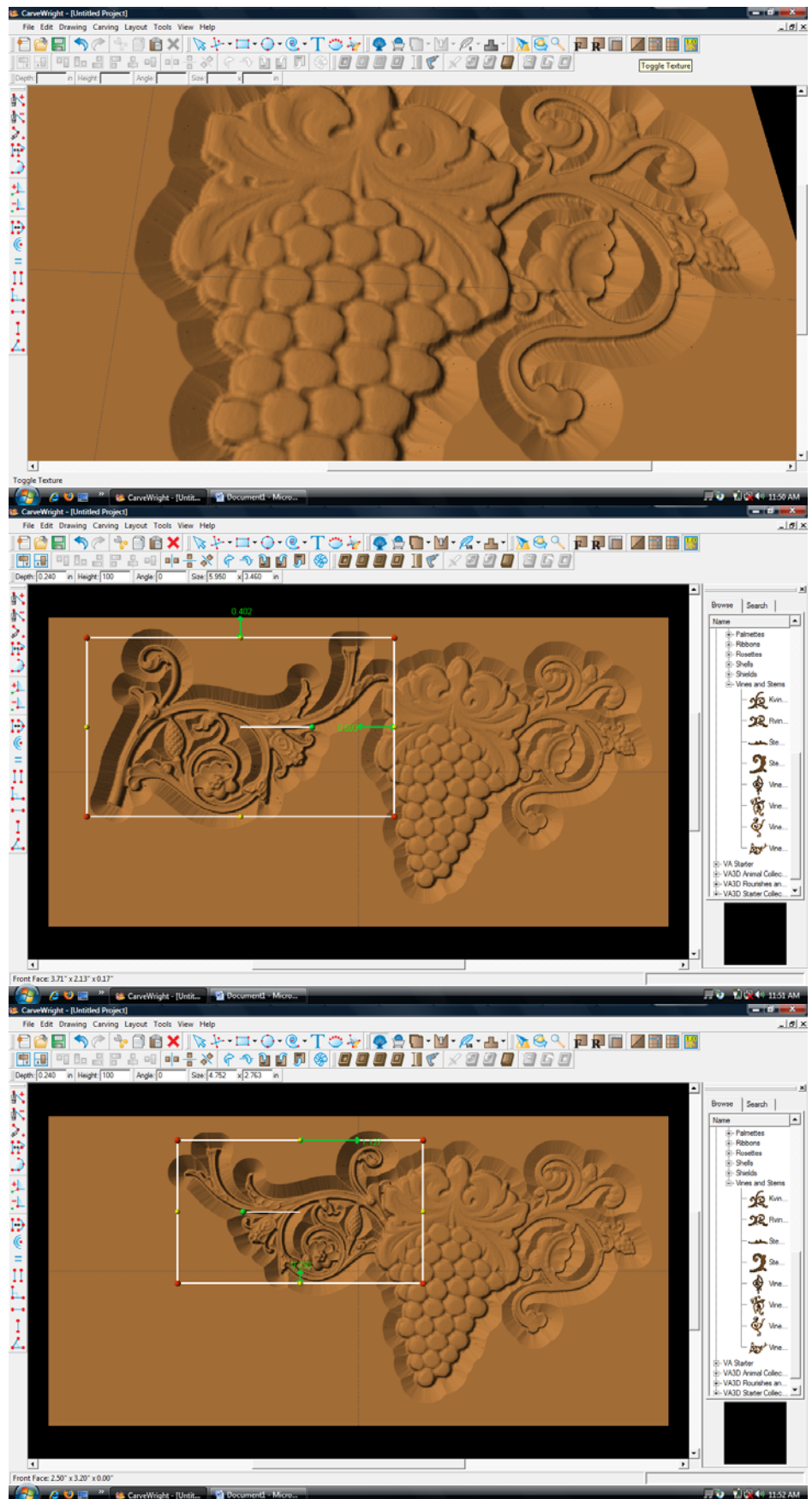
Select “Vine06” from “Vines and Stems” in the Pattern Library and place onto board.

Use the right-click button on the mouse to bring up menu of available options for that pattern.



Select “Flip & Rotate”-
“Rotate Horizontally”.

Scale pattern down and overlap with grapes.



- FINE TUNING
- ADJUSTING DEPTH & HEIGHT

Like other patterns, change the Depth to “.125” or “1/8” inch.

Change the Height to “30” to match other vine pattern.

- TEXT TOOL

T

Next, select the “Text Tool” and click on board.

Text dialog box will appear.

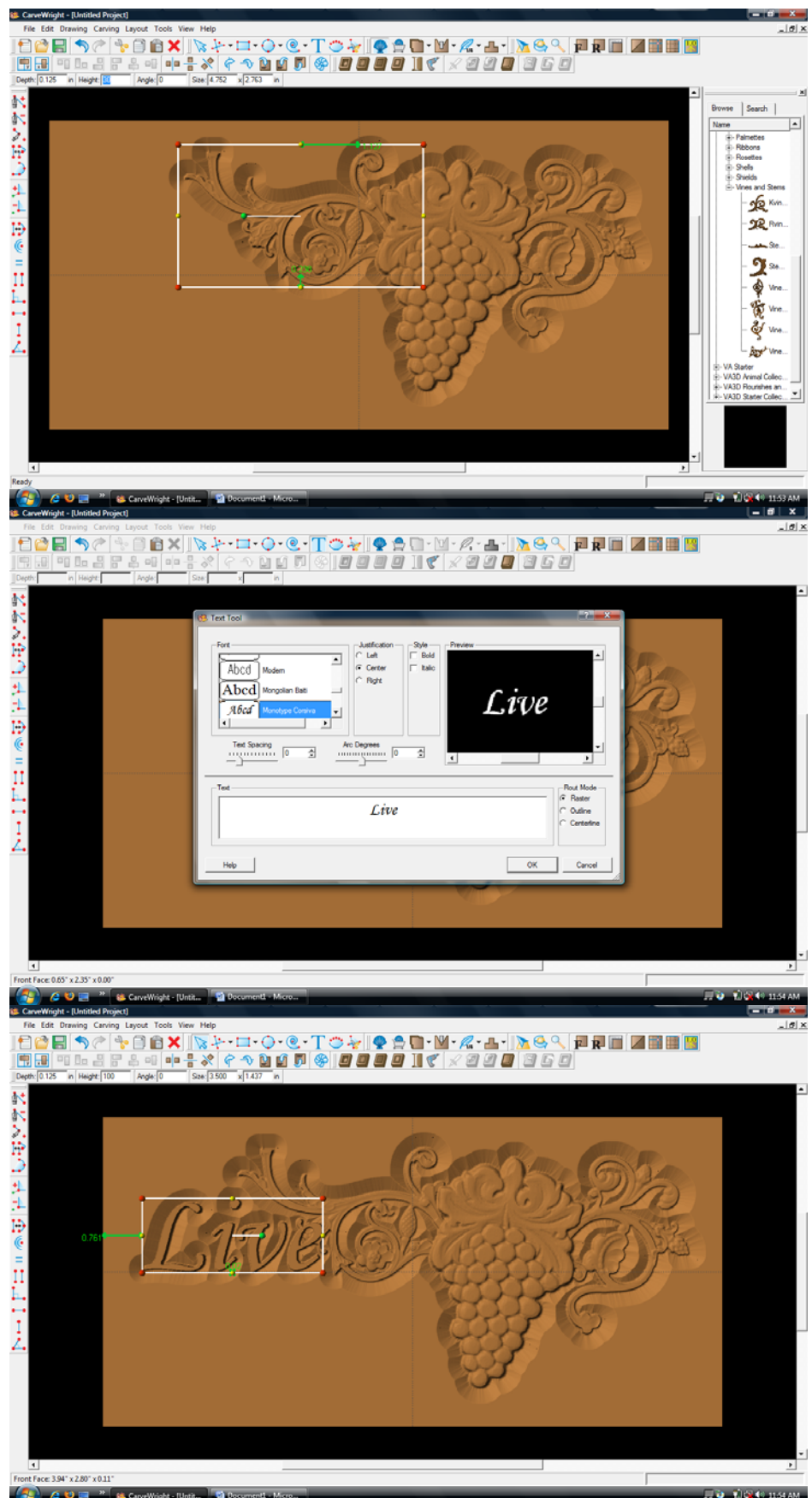
Select from any of the true type fonts that you have on your computer.

Type the word “Live”

Select “Raster” from one of the available Rout Modes.

Notice the other options available from “Text Tool”.

Manipulate the size and placement of the word, just as you would a pattern by scaling up and overlapping with the vine.





Right Click on “Live” and
select “Copy”.

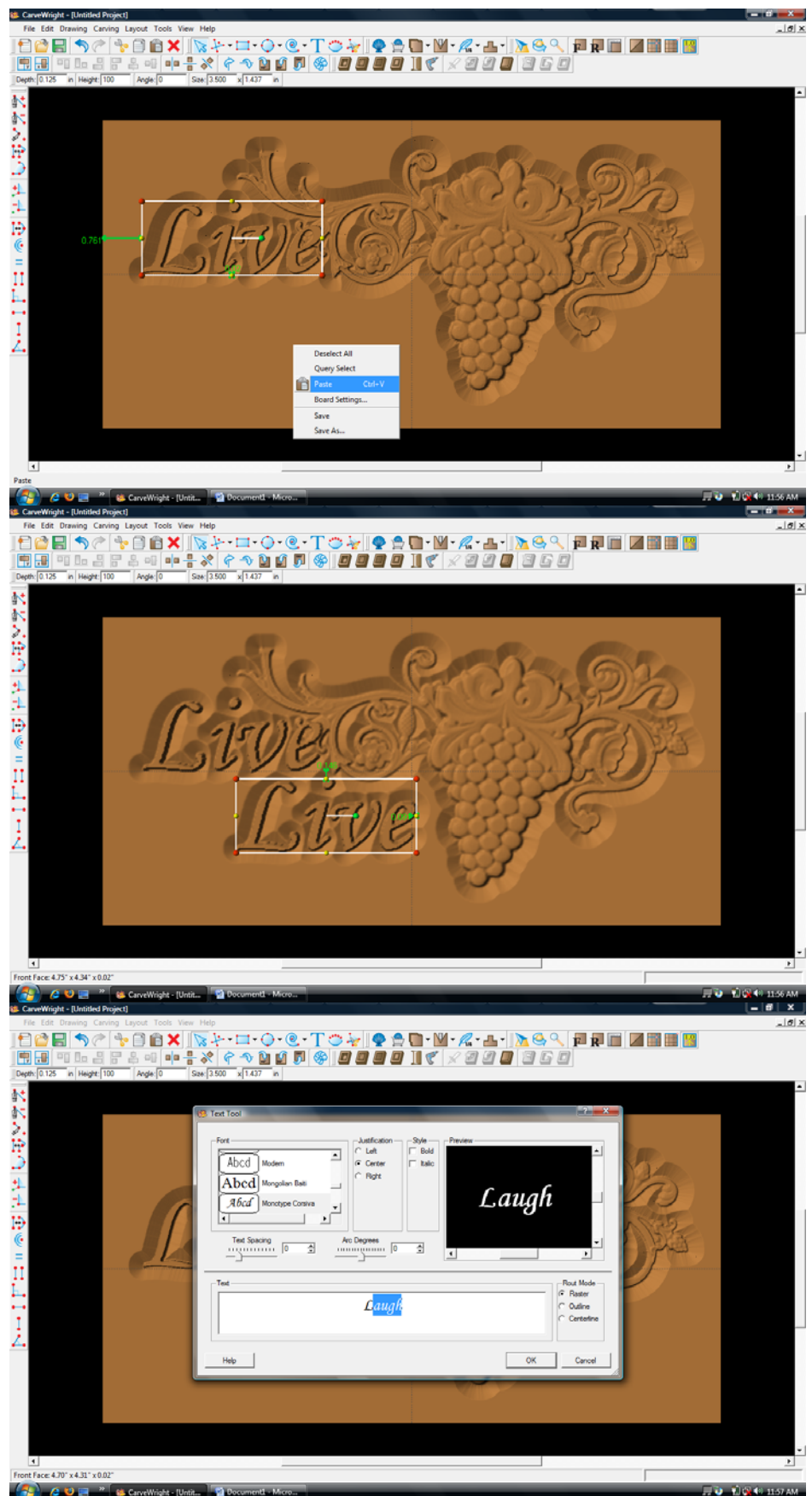


Click on board, right click
and select “Paste”.

The word “Live” will appear
again on the board. Double
click on word.

Text dialog box will reopen.

Change the word to
“Laugh” and click “OK”.



The word “Laugh” will appear on the board the same size as “Love”.

Move to place as shown.

Click an open area of the board to unselect “Laugh”.



Right click and select “Paste” again.

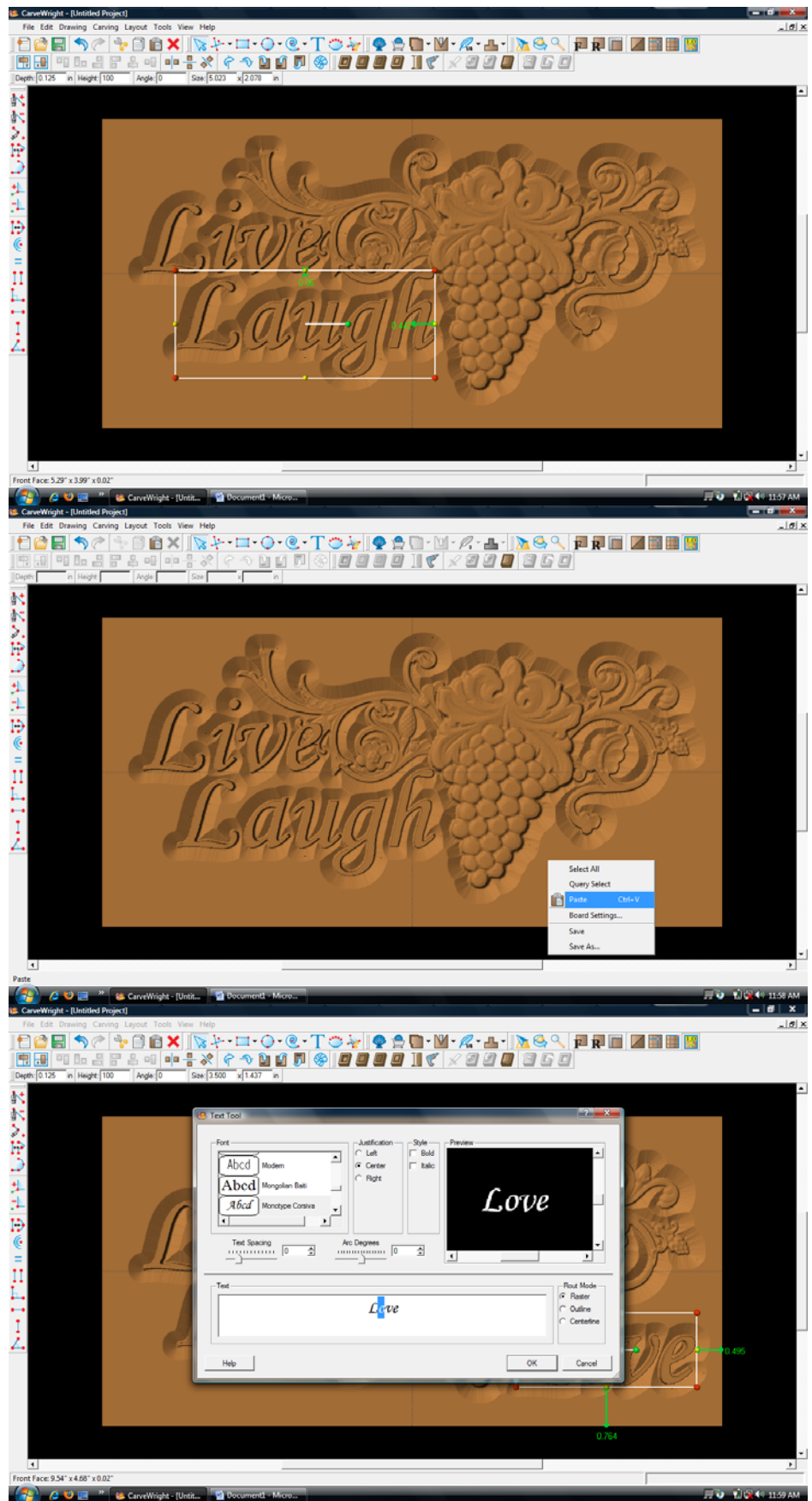
The word “Live” from the clipboard will appear on the board again.

Double click the word.

When the Text dialog box appears, change word to “Love”.

Move to place as shown.

Click “OK”.

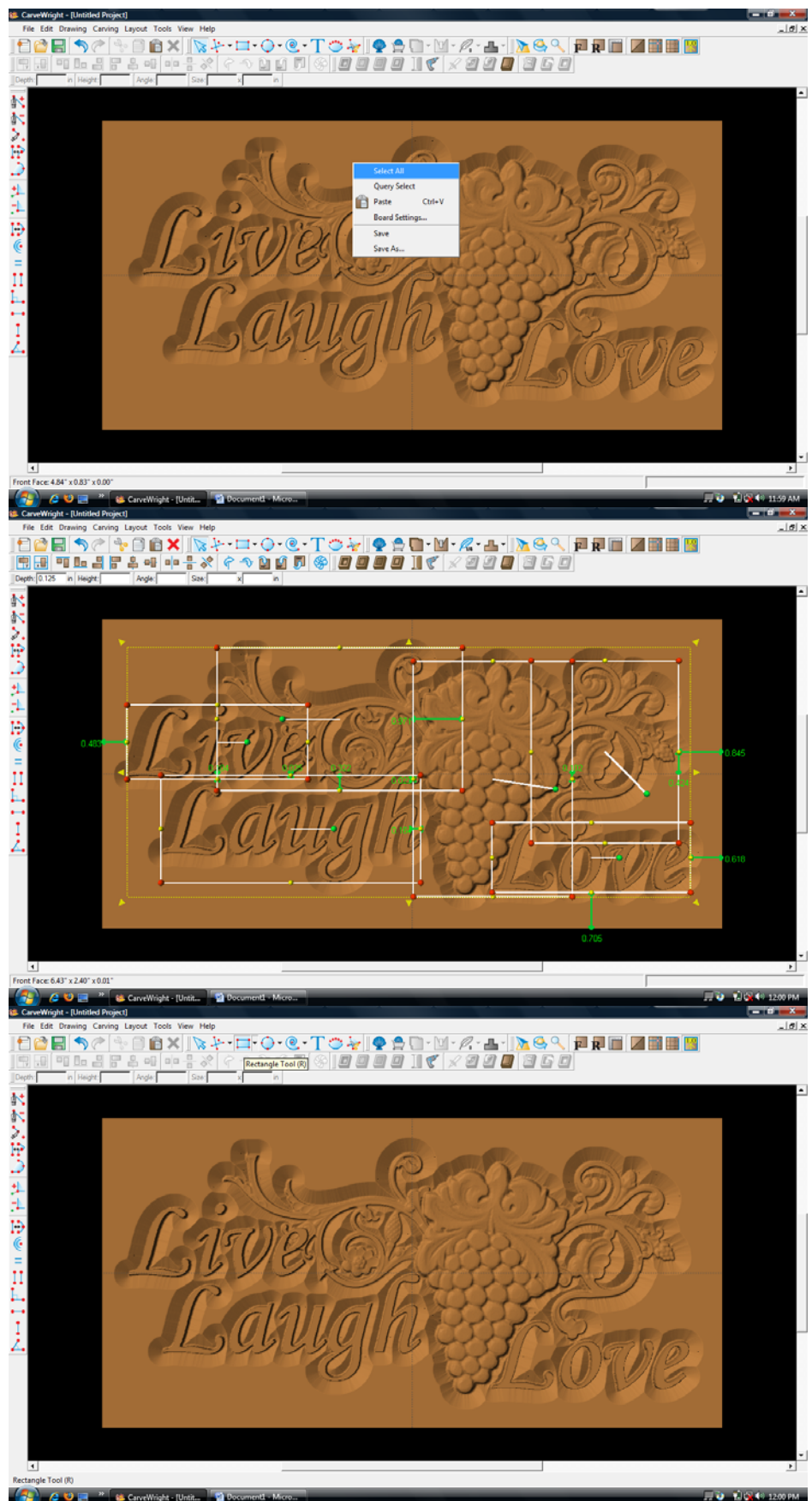


Right click on an open area of the board and choose "Select All".

Notice the yellow dotted line around all patterns.

This allows you to move everything together.

Adjust the patterns so they are better centered on the board.



➤ DRAWING TOOLS



Select the “Rectangle Tool”.

Draw Rectangle across the entire board, leaving a border as shown.

➤ REGIONS



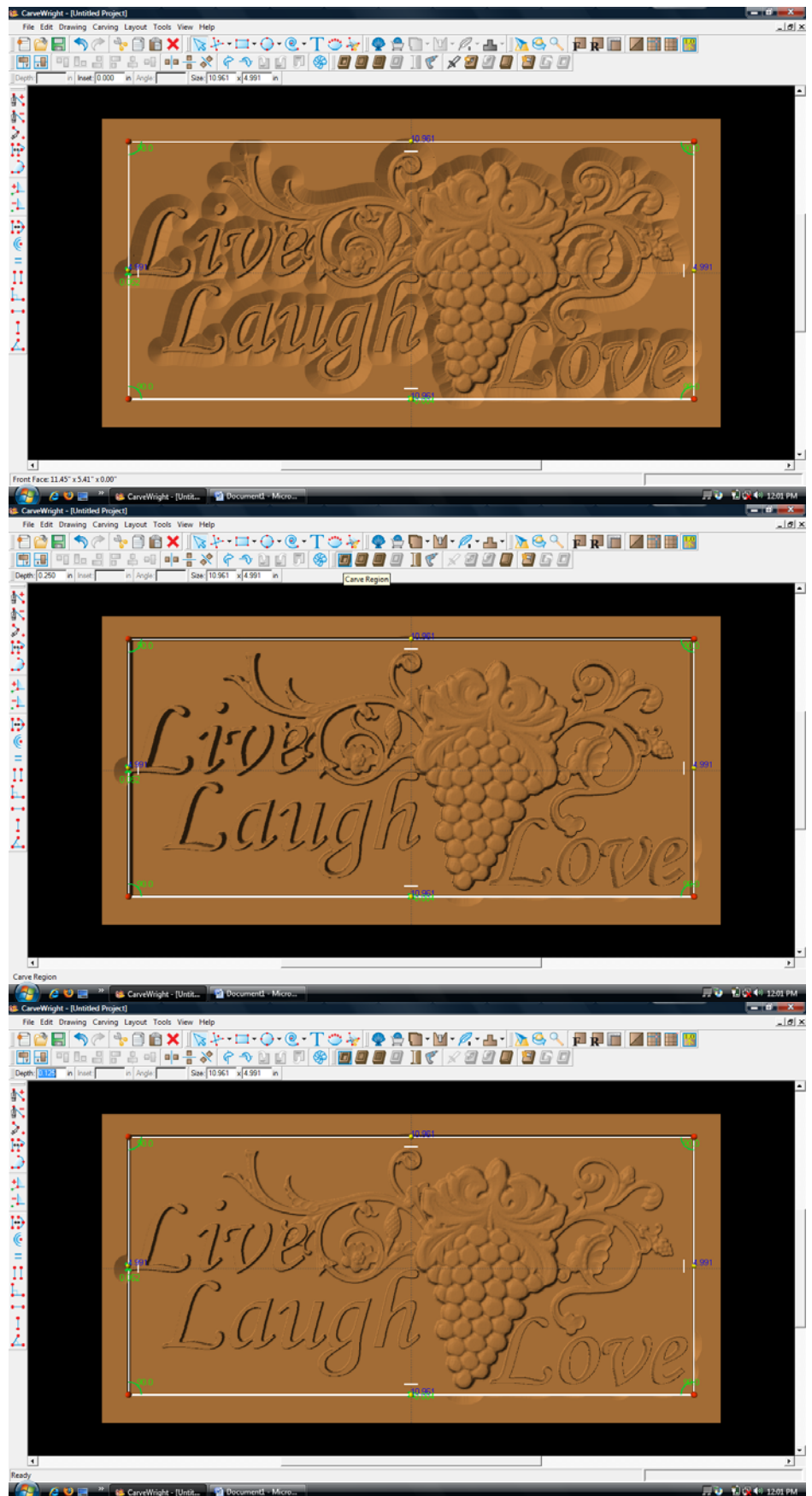
Select “Carve Region”.

This applies a carved area to the rectangle with a default depth of .25”.

➤ FINE TUNING

➤ ADJUSTING DEPTH

Change the Depth to “.125” to shallow this region to match the rest of the carvings.





Right click and select
“Center Both”.

➤ TEXTURE

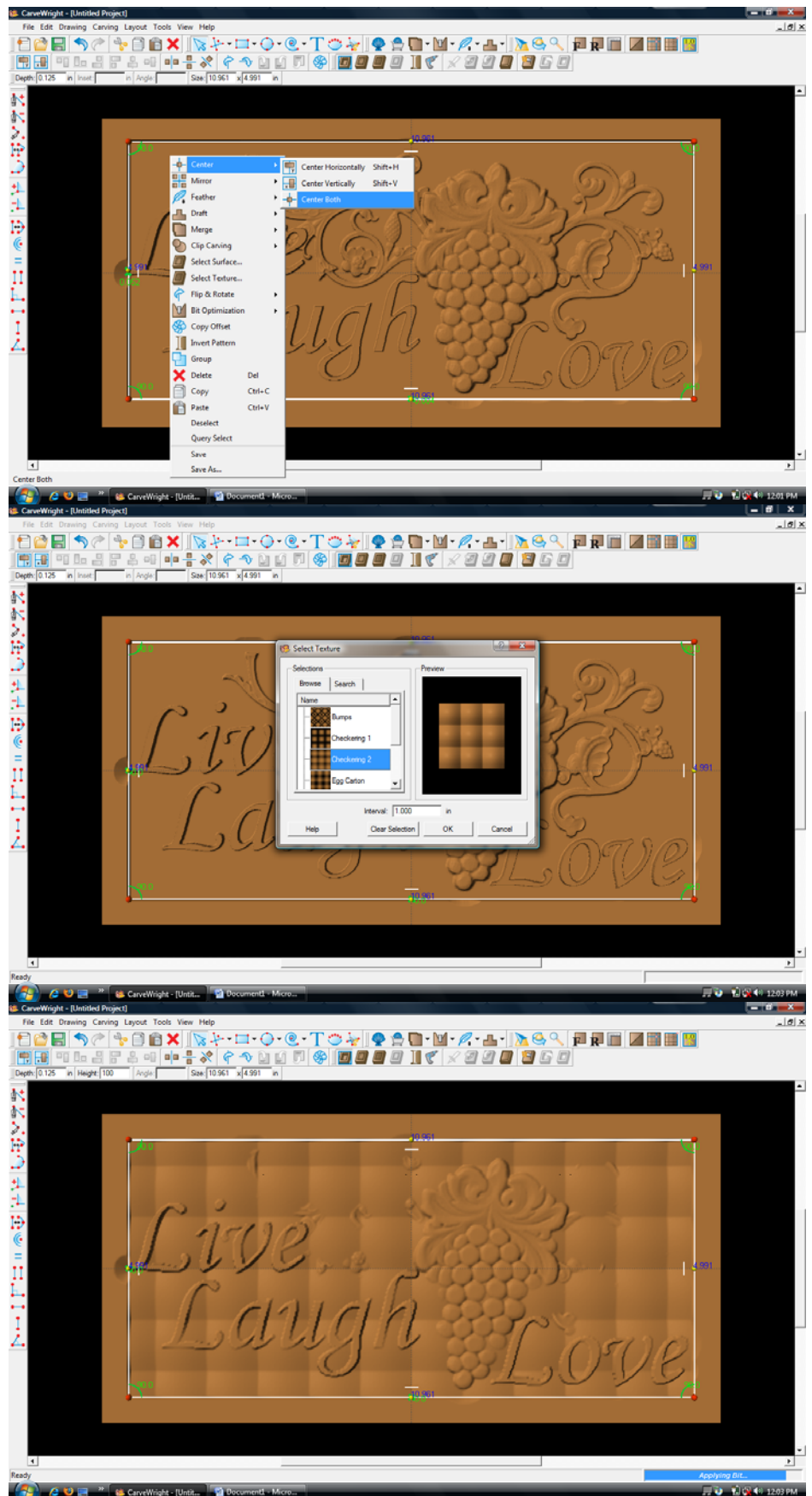


Click on “Select Texture”.

Texture dialog box appears
displaying a variety of
available textures.

Select “Checkering 2” and
leave the interval at 1”.

Texture appears in the
rectangular region, but is
overtaking parts of the
design.



- FINE TUNING
- ADJUSTING HEIGHT

Correct this by adjusting the Height to “20”. This sets the texture back enough to be more subtle.

- MANIPULATING THE WORKPIECE



Rotate and/or zoom your workpiece to see your design board more clearly.

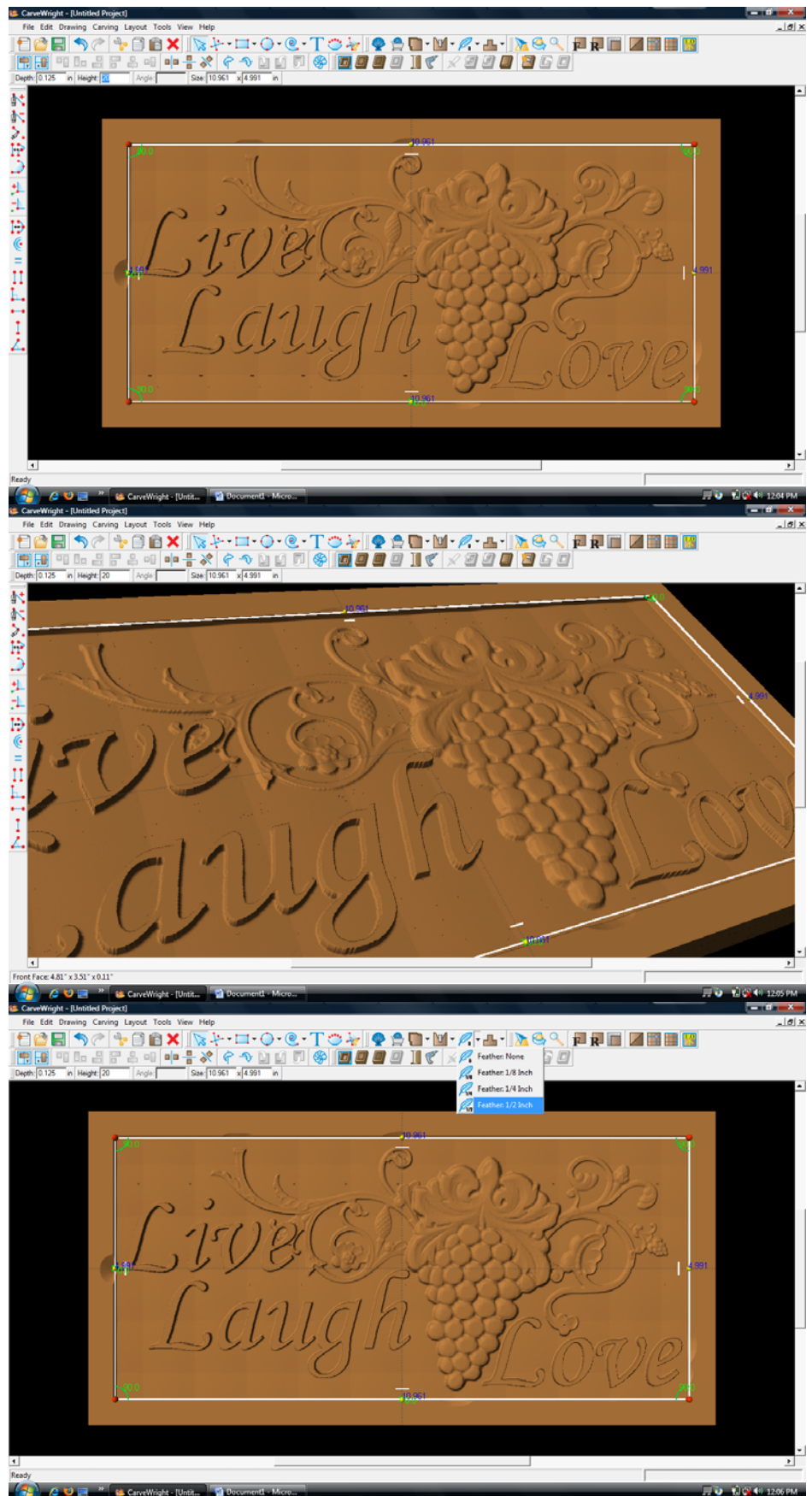
- CARVING OPTIMIZATION

- FEATHERING



With the rectangular region selected, click on the “Feather Tool”.

From the drop down menu, select “Feathering ½ inch”.



Adding a feathered edge applies an internal bevel to the region.

It helps to eliminate a straight up and down edge referred to as a “cliff edge”.

➤ CARVING LIST

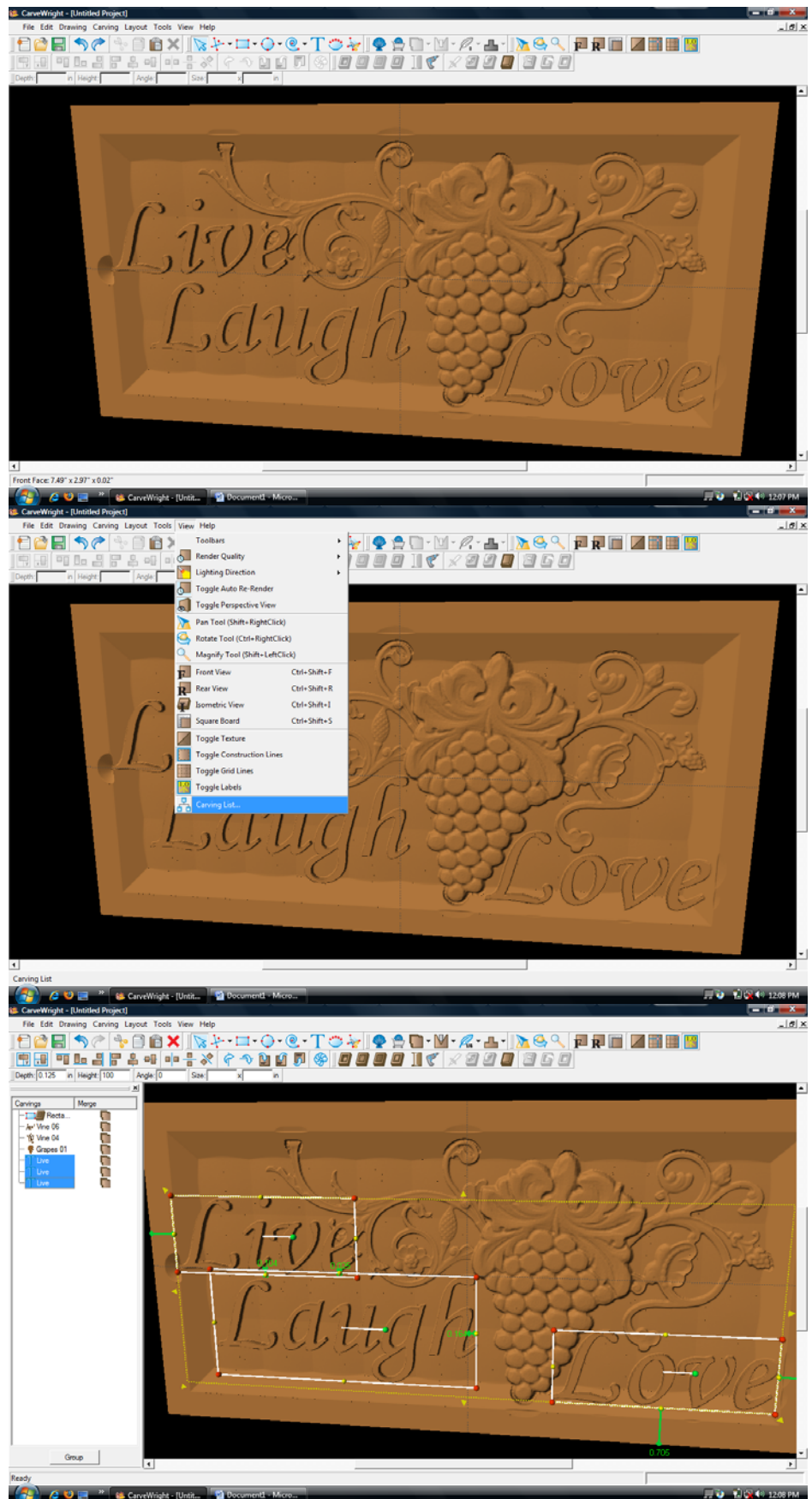


Select “View” and then “Carving List”

The Carving List opens on the left displaying every element on the virtual design board.

These elements can be rearranged or selected in a variety of ways.

Select the 3 text files by holding down the shift button and clicking on each of them.



➤ CARVING OPTIMIZATION

➤ DRAFT



Select the “Draft Tool” and choose “Draft Large”.



This puts a bevel on the edge of the letters removing cliff edge.

➤ FEATHERING



Select the “Feather Tool” button again. This time select “Feather None”.

This removes the feather from the letters.

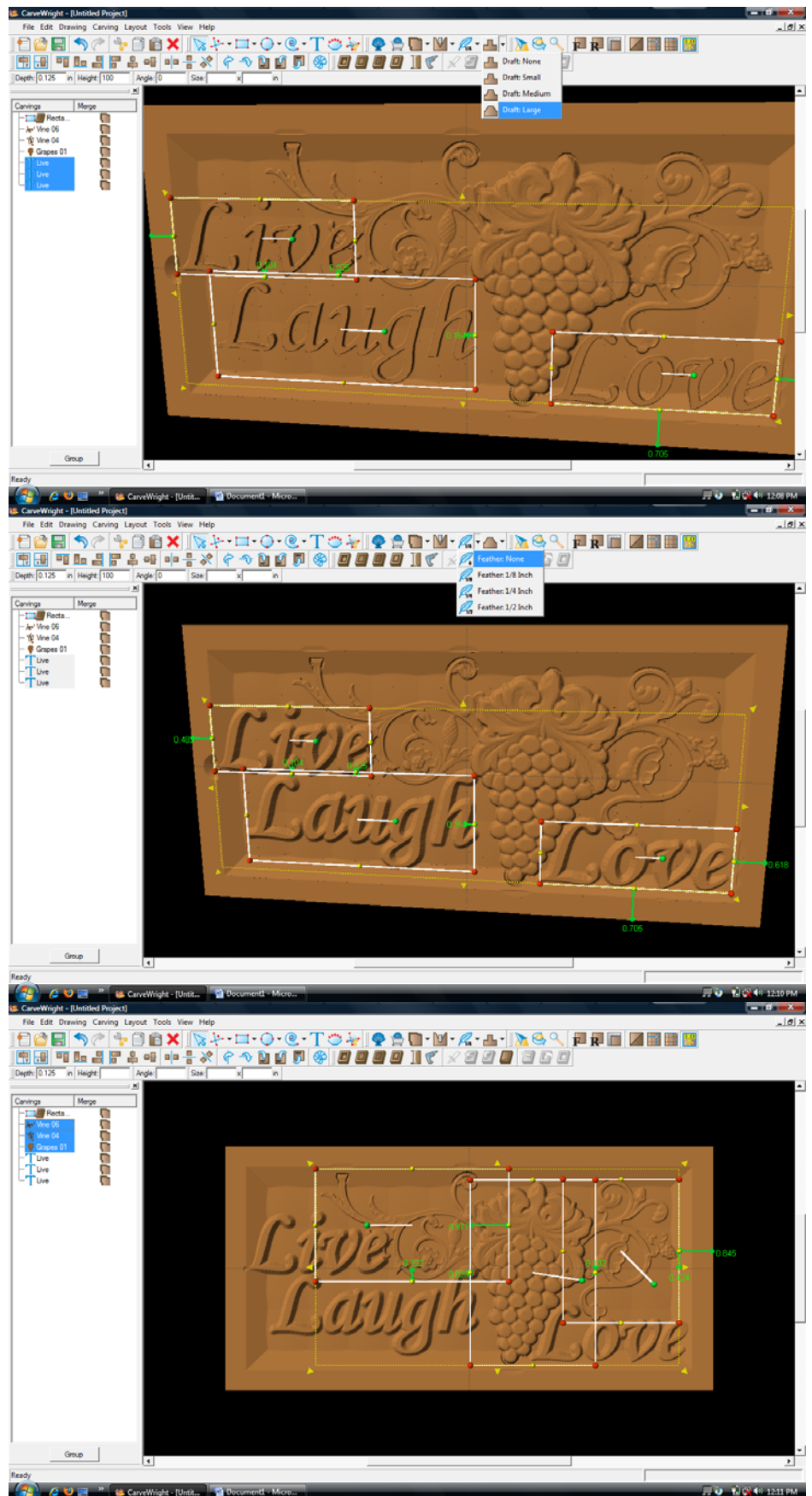
Select the 3 patterns from the Carving List.



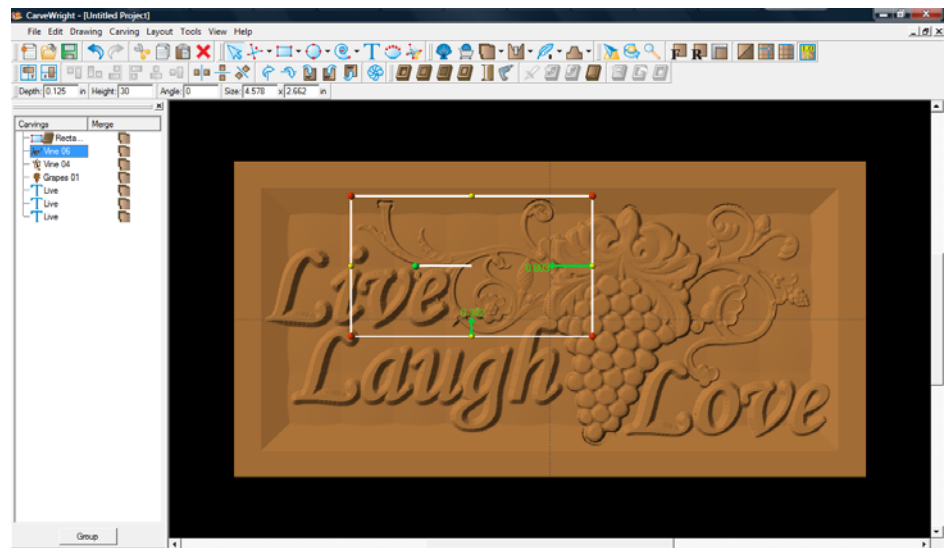
Select “Draft” and choose “Draft Medium”.



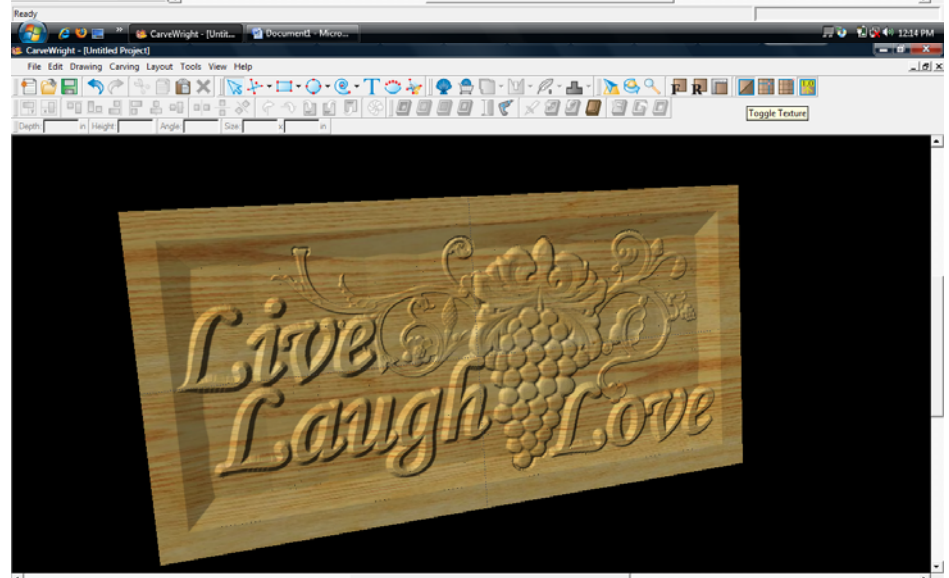
This slight bevel to the patterns aids in the removal of cliff edge.



Now select each element and adjust their placement until the design arrangement is satisfactory.

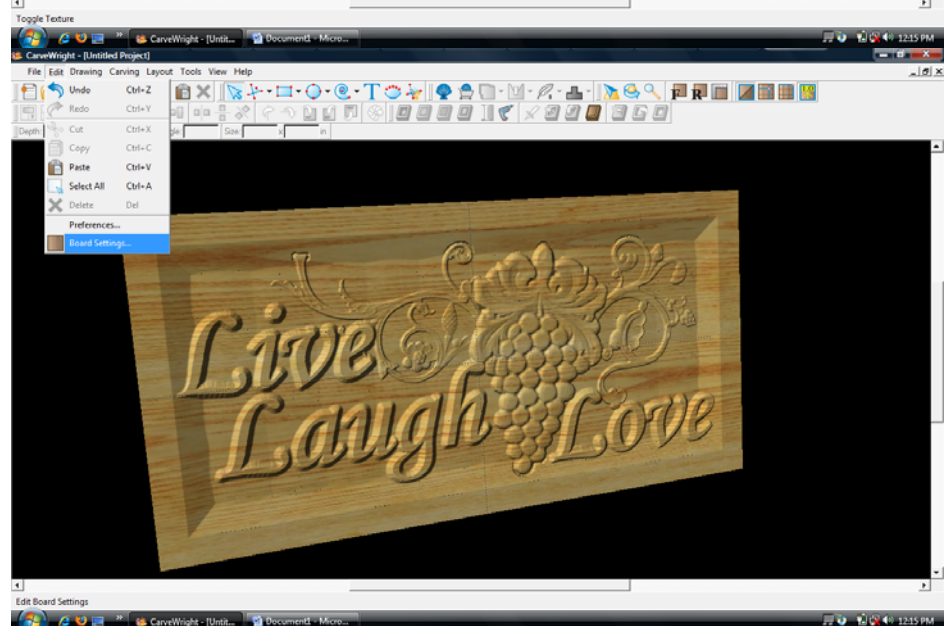


Toggle the Texture back on to see the design with wood grain again.

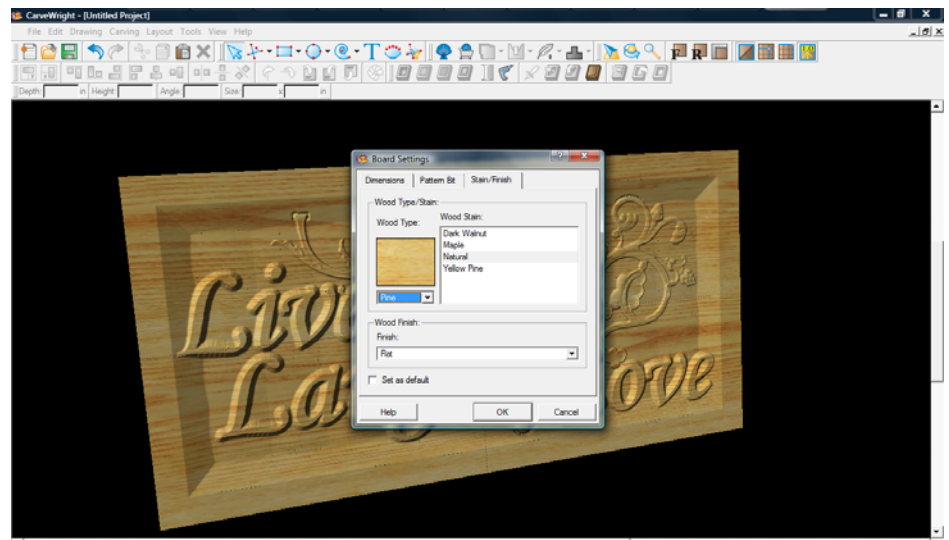


➤ BOARD SETTINGS

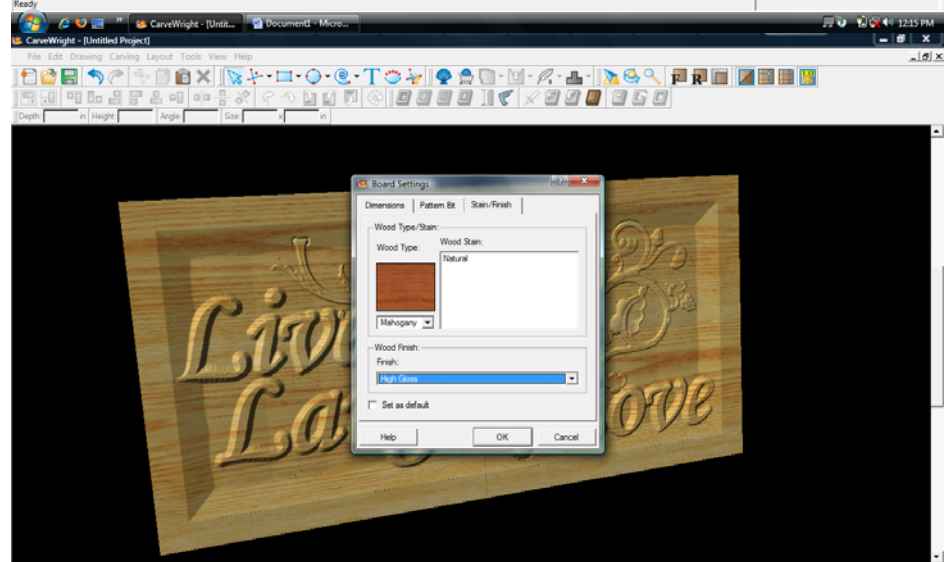
Select "Edit" then "Board Settings" to open the board setting dialog box.



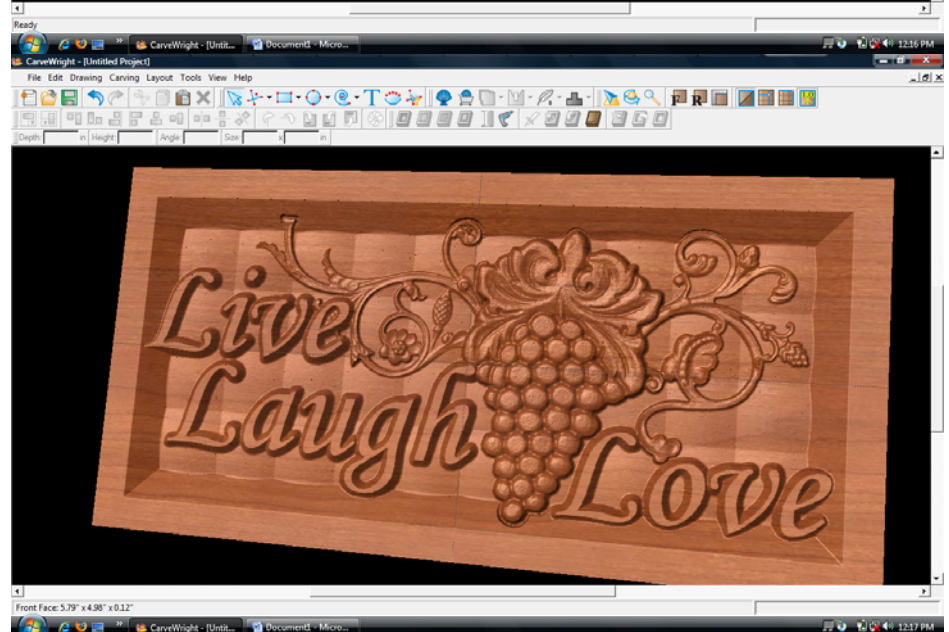
In the Board dialog box choose the Stain/Finish tab.




Change the wood type to “Mahogany” and the finish to “High Gloss”.
Click “OK”.



The board’s appearance changes to look like a finished board.



 Rotate to view it at different angles.



Select "File", "Save"

*****IMPORTANT*****

Name file and click "Save"
to hard drive.

- UPLOADING TO
MEMORY CARD



Select "File", "Upload"

- QUALITY SETTINGS

Flash Manager dialog box
appears. Set your quality
setting to Best, Normal and
then Draft to see how the
estimated time to carve
changes.

Save to memory card.

Example:
liveloughlove_N_27
(recognizable name_quality
setting_estimated time to
carve)

