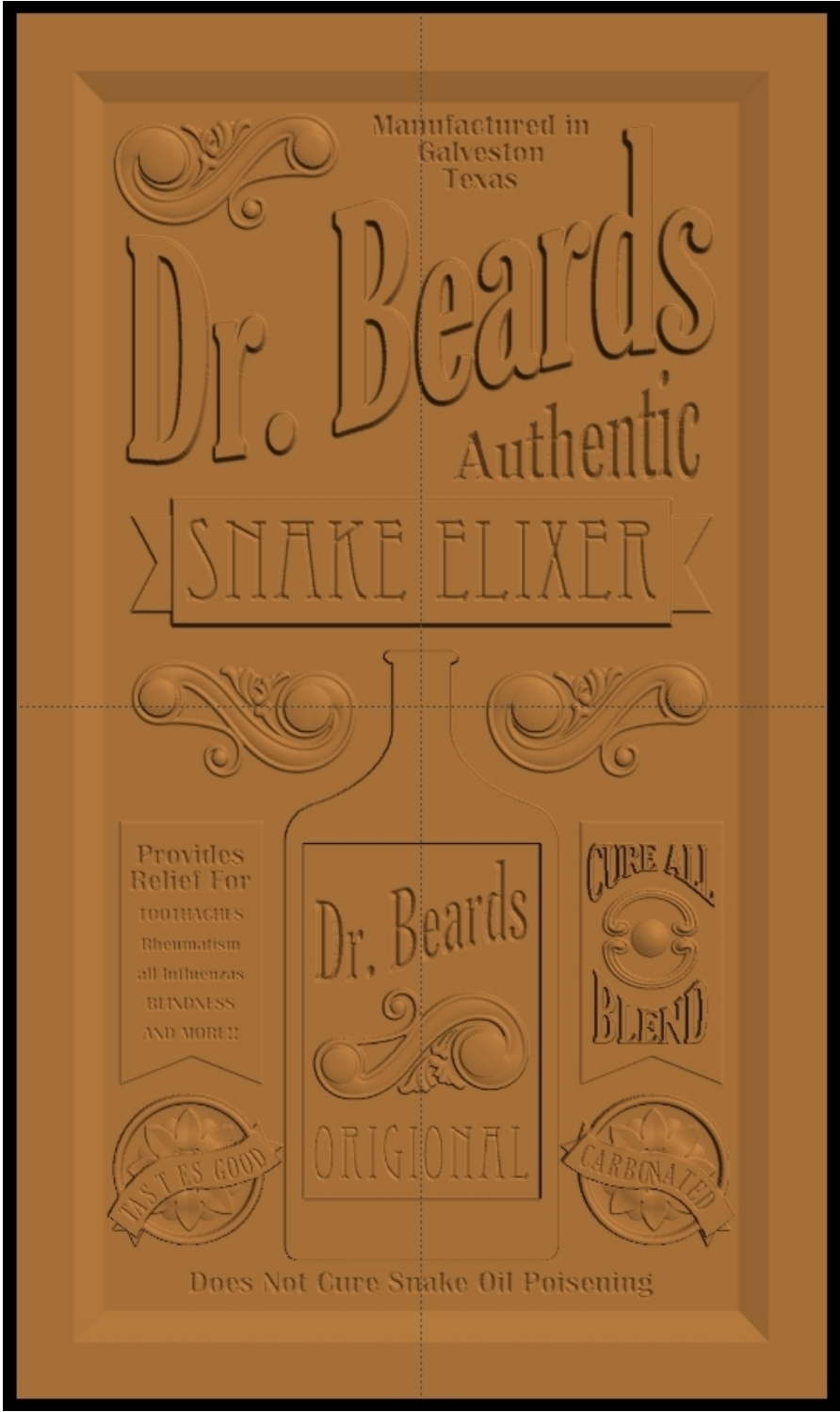
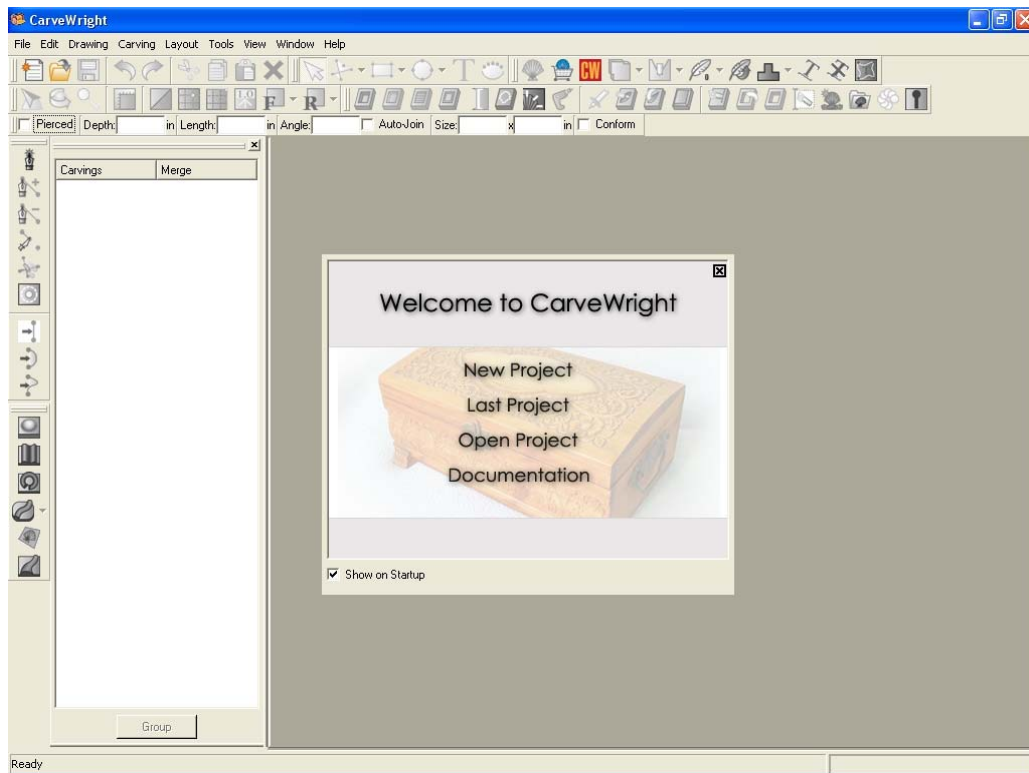


# Dr. Beards Snake Oil Advertising Sign

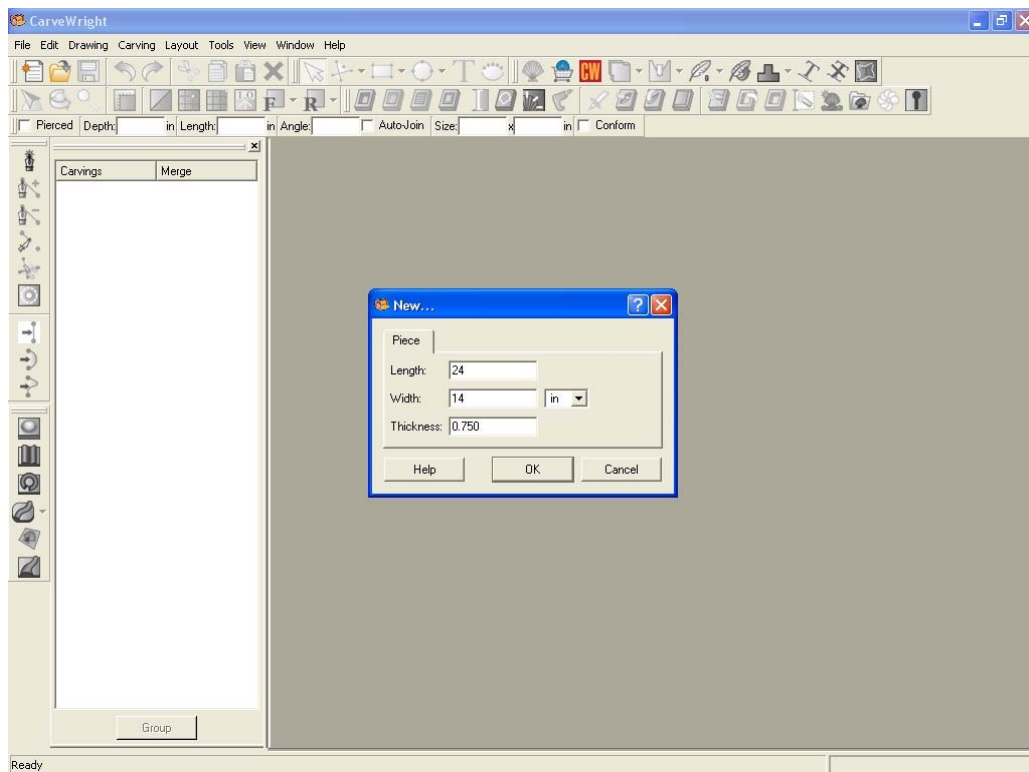


DOWNLOAD THE PATTERNS FOR THIS TUTORIAL HERE  
[http://www.carvewright.com/assets/service/Tutorials/Dr\\_Beards\\_Poster.zip](http://www.carvewright.com/assets/service/Tutorials/Dr_Beards_Poster.zip)

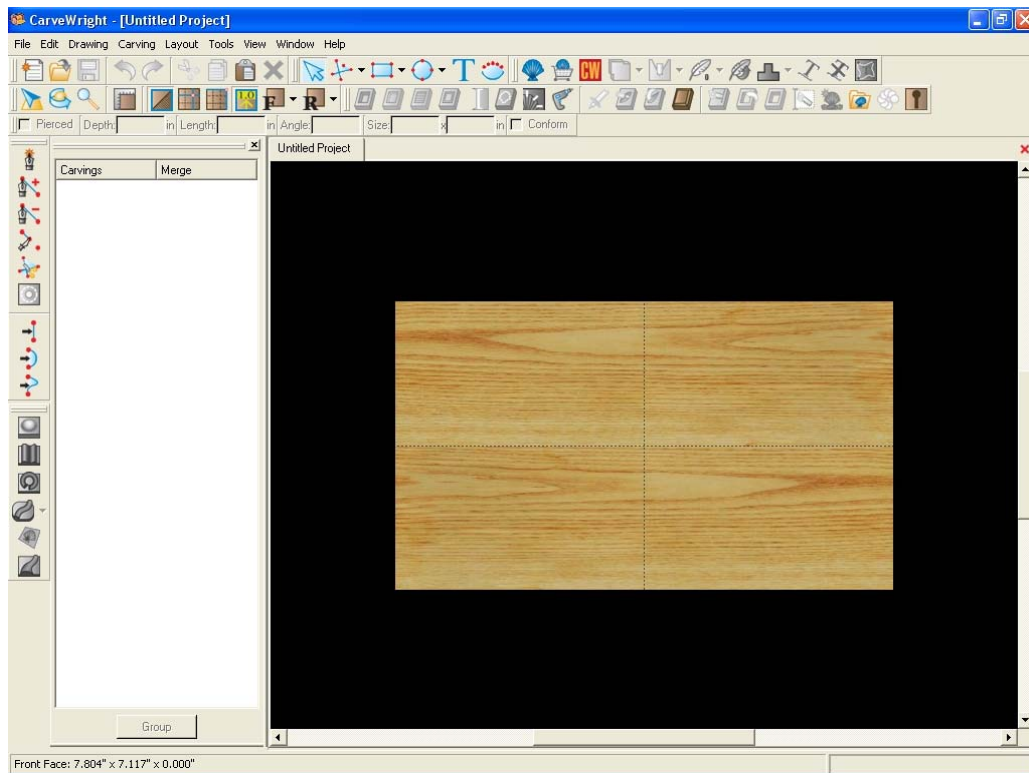
## Open Designer PRO



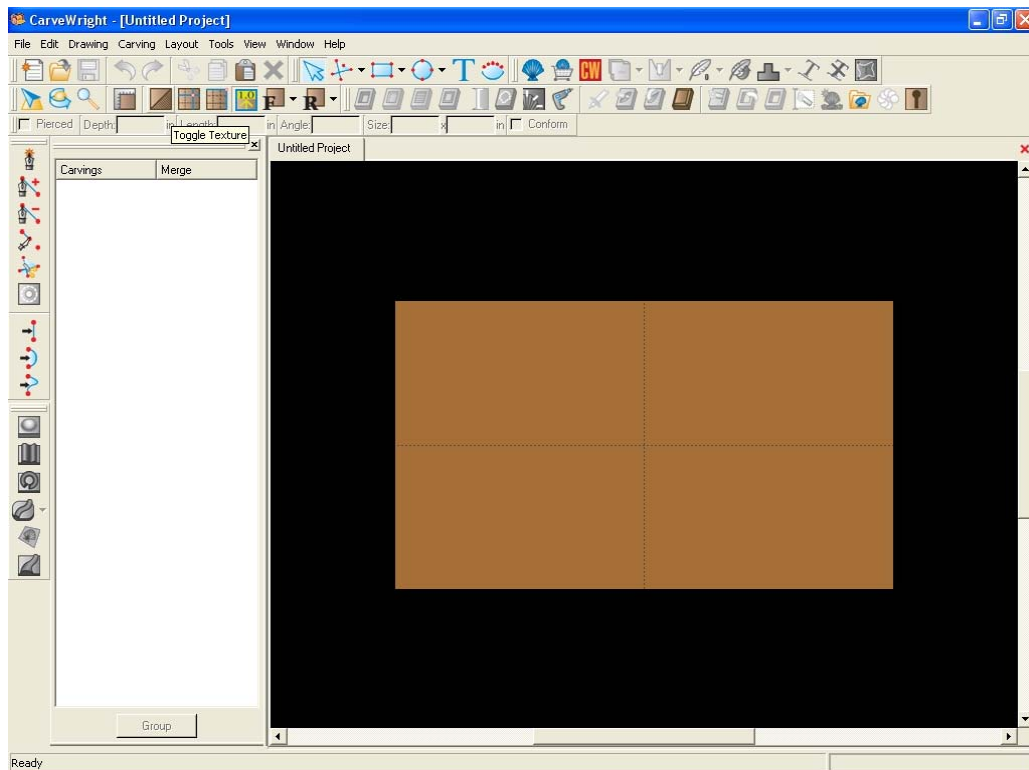
Create a new project and set the dimensions to length = 24" width = 14"



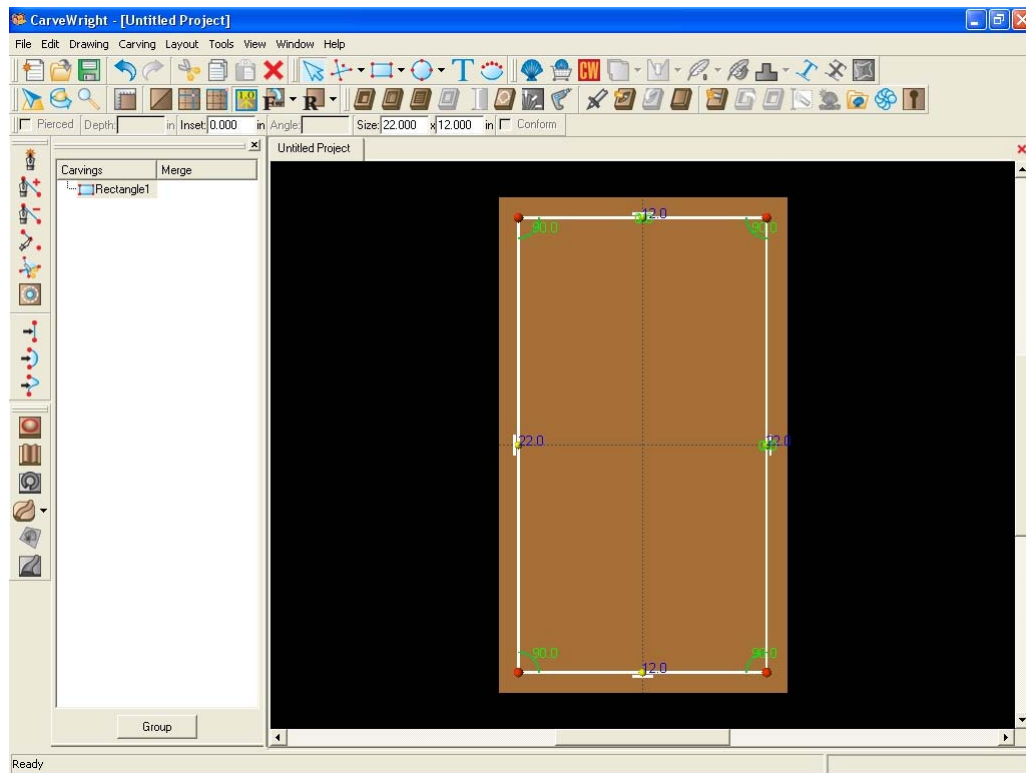
The workpiece will appear horizontally on the screen.



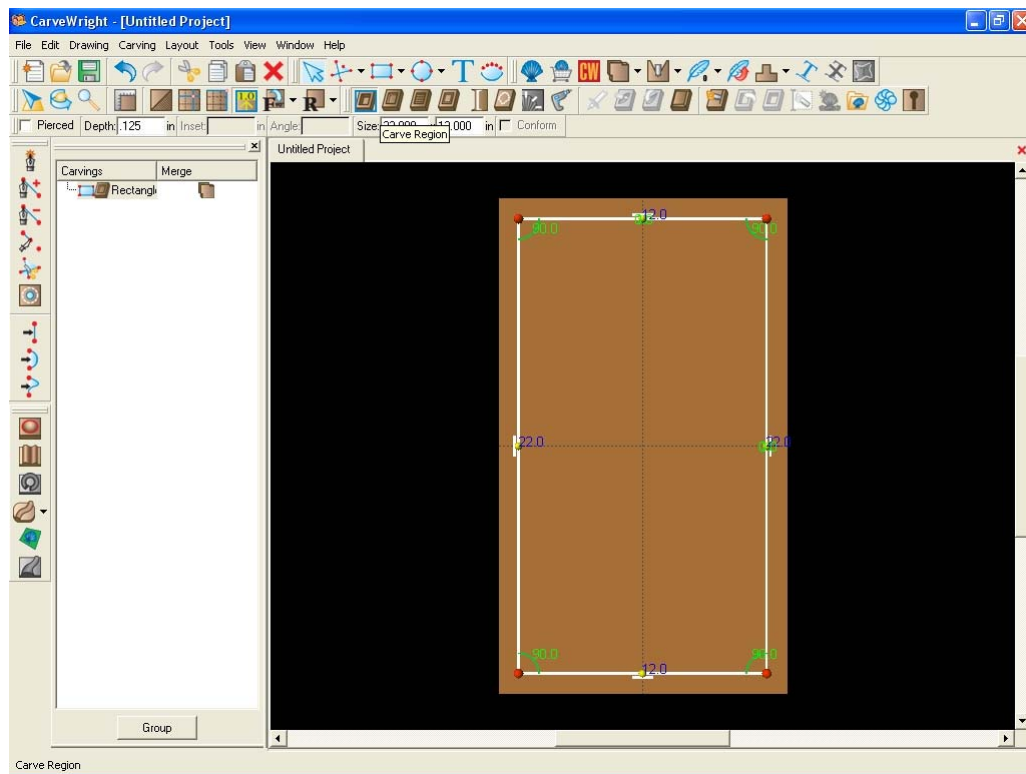
Turn off the texture for best viewing. Then rotate the board 90 CW to orient the project as it will be viewed in real life.



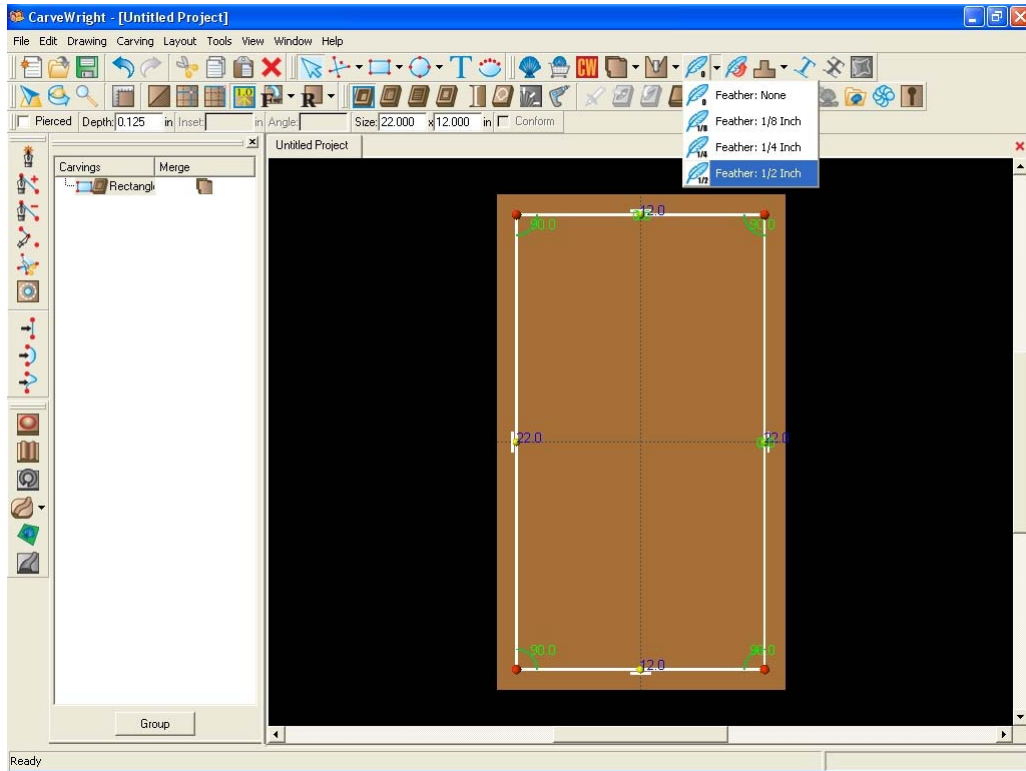
Using the Rectangle Tool, place a 22”by 12” rectangle on the workpiece and Center it in both axes.



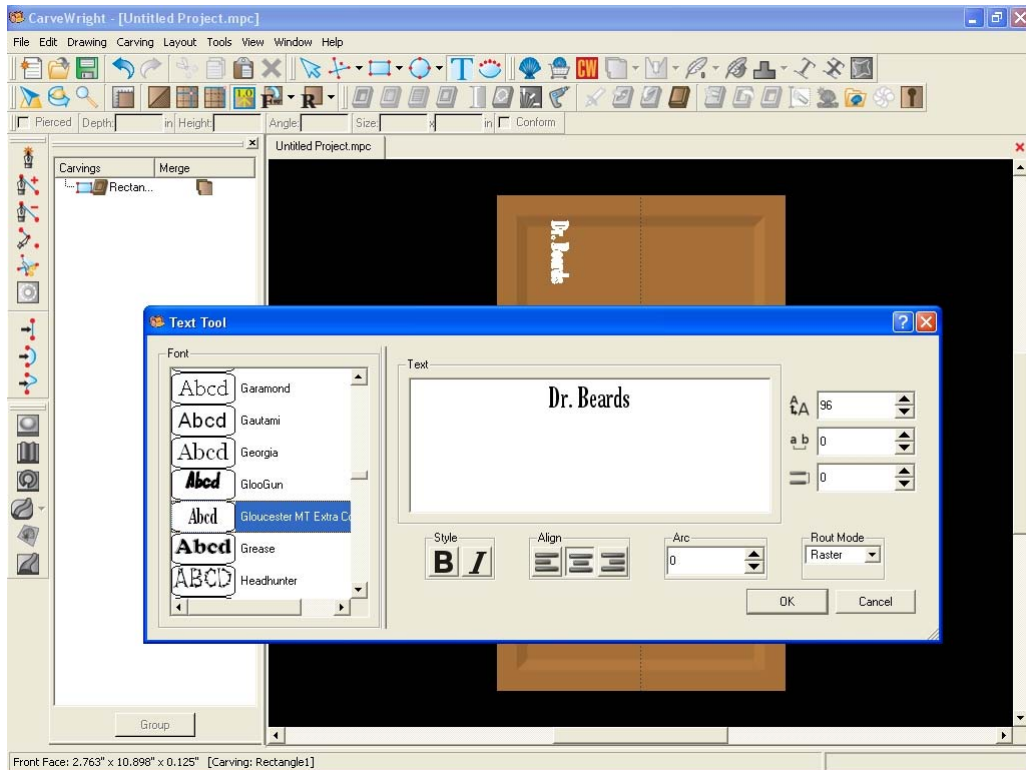
Use the Carve Region tool and set the depth to be .125” deep.



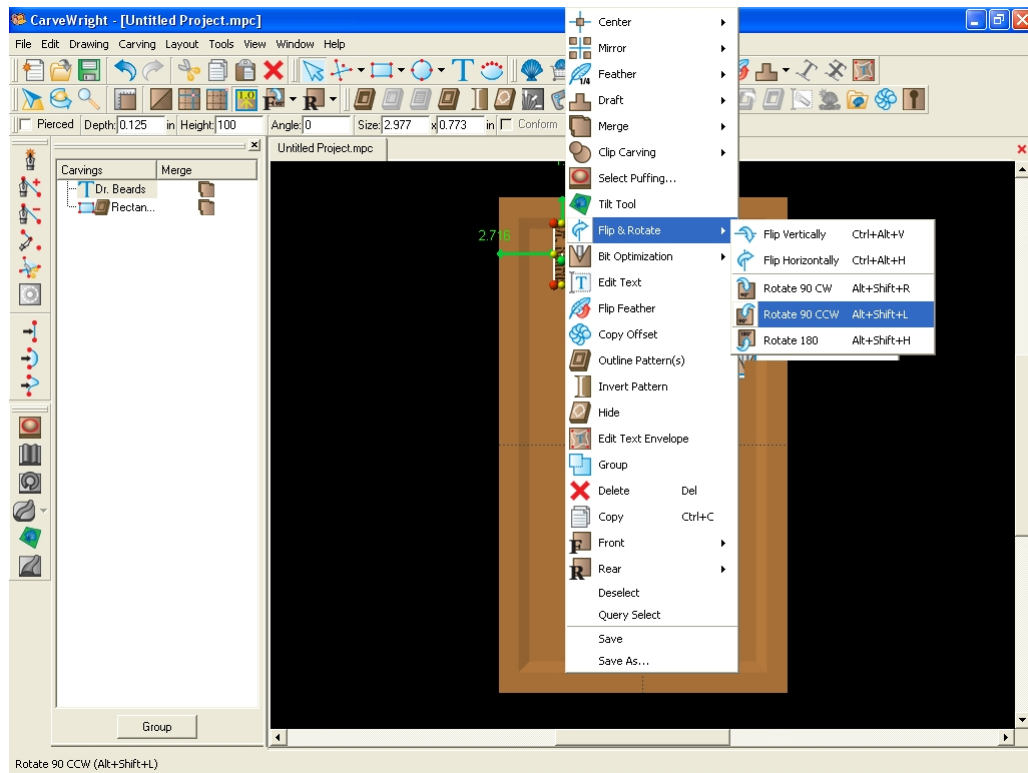
Use the Feather tool to create a 1/2" bevel around the rectangle. Do not flip the feather when asked.



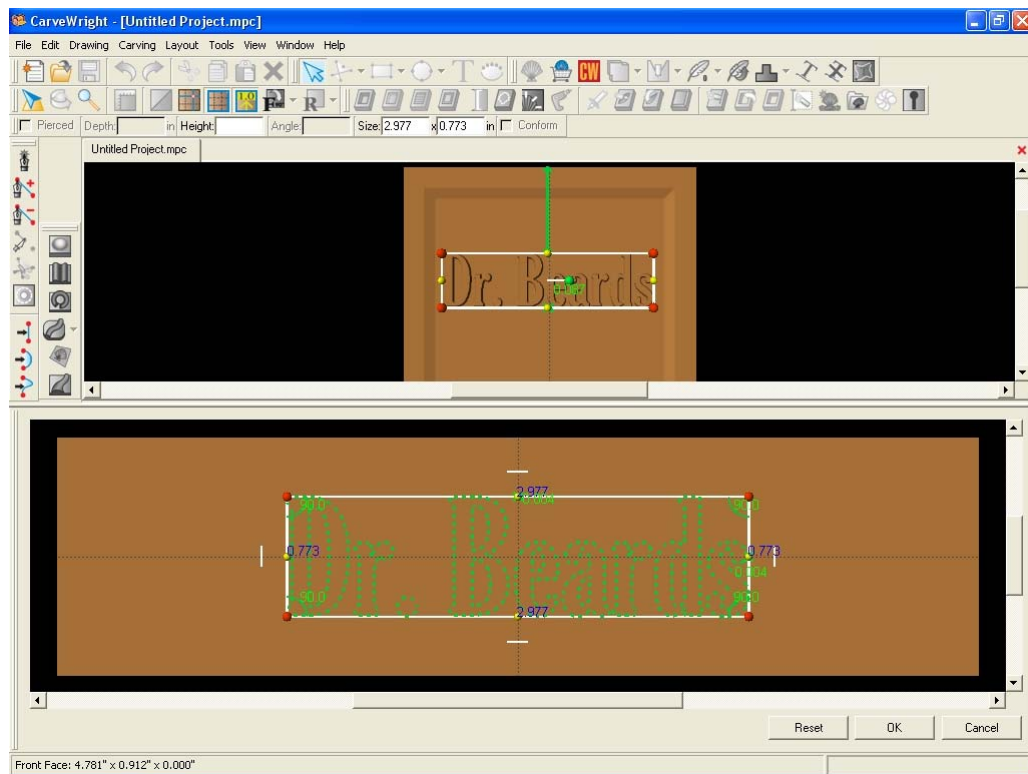
Select the Text Tool and enter “Dr. Beards” in the text window. Select the Gloucester MT font (or similar), and make sure the carving mode is Raster. Select OK.



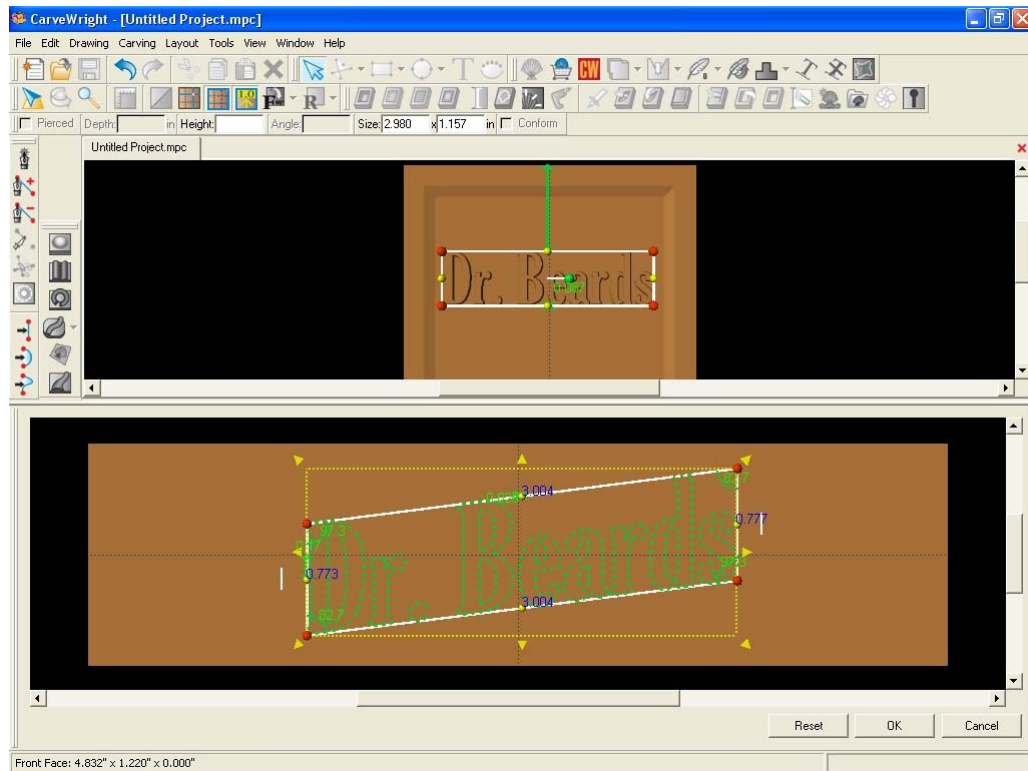
Right click on the highlighted text and Flip & Rotate it 90 CCW



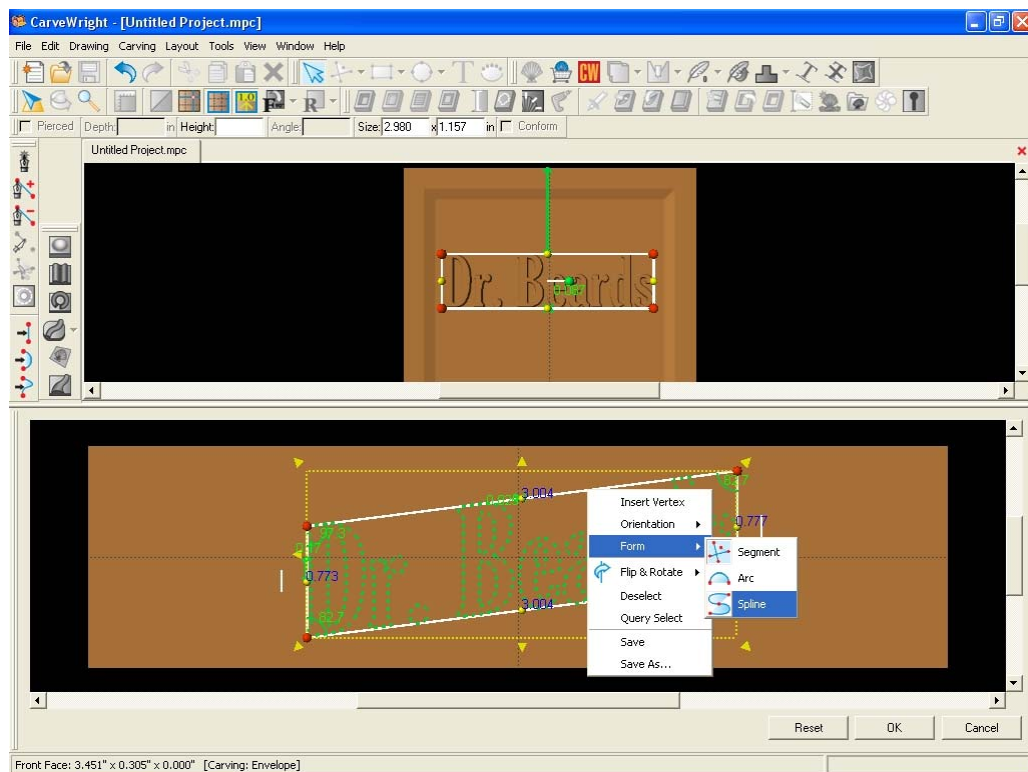
Scale the text to fit the width of the carved region and select the Edit Envelope tool.



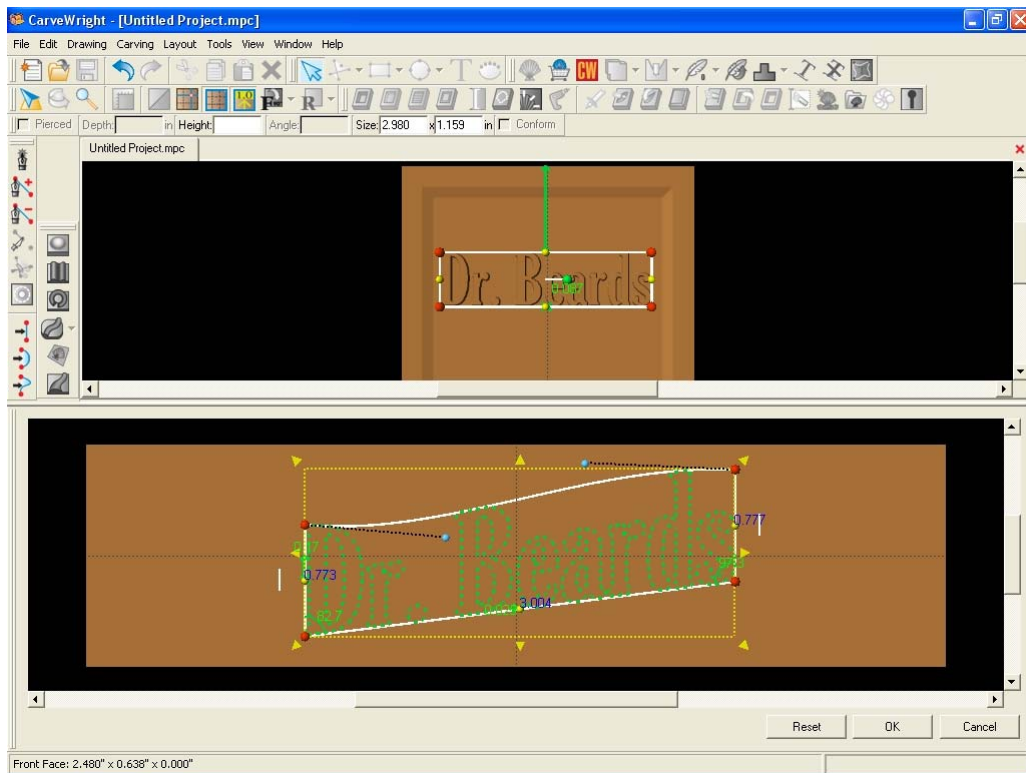
In the bottom edit envelope window start by grabbing the two right corner red dots and move them up creating a parallelogram shape. Keep the end length roughly the same and near vertical.



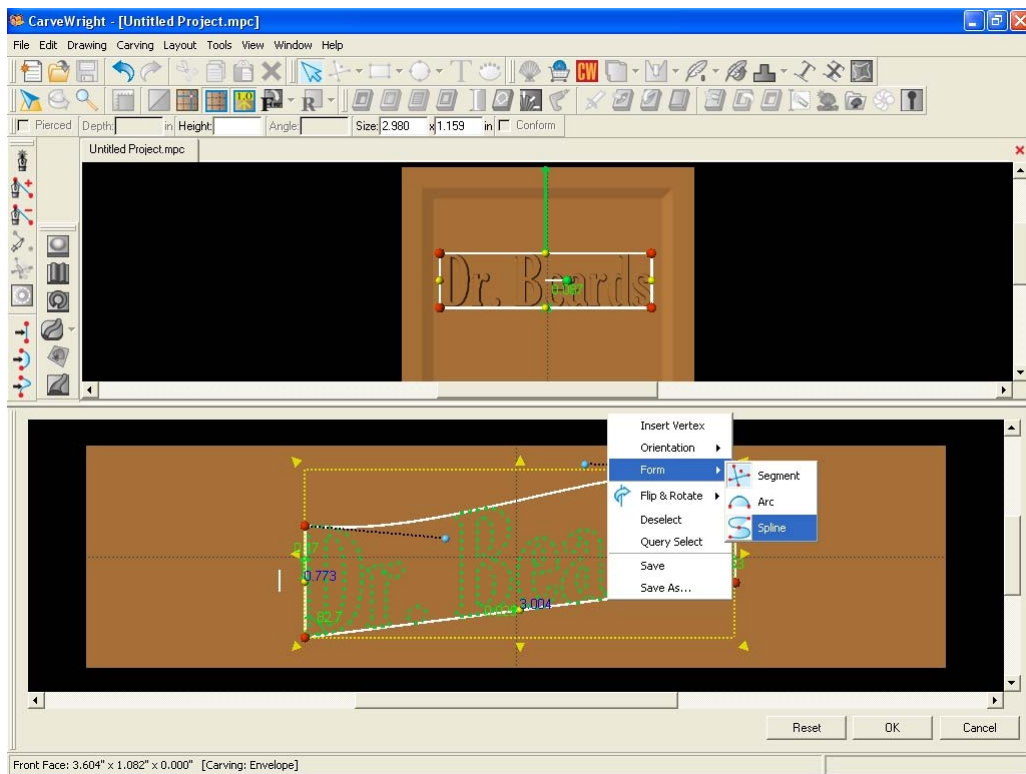
Next right click on the line bounding the top of the text and change its form to Spline.



Manipulate the spline control points (blue dots) to create a curve to the top line of the text box

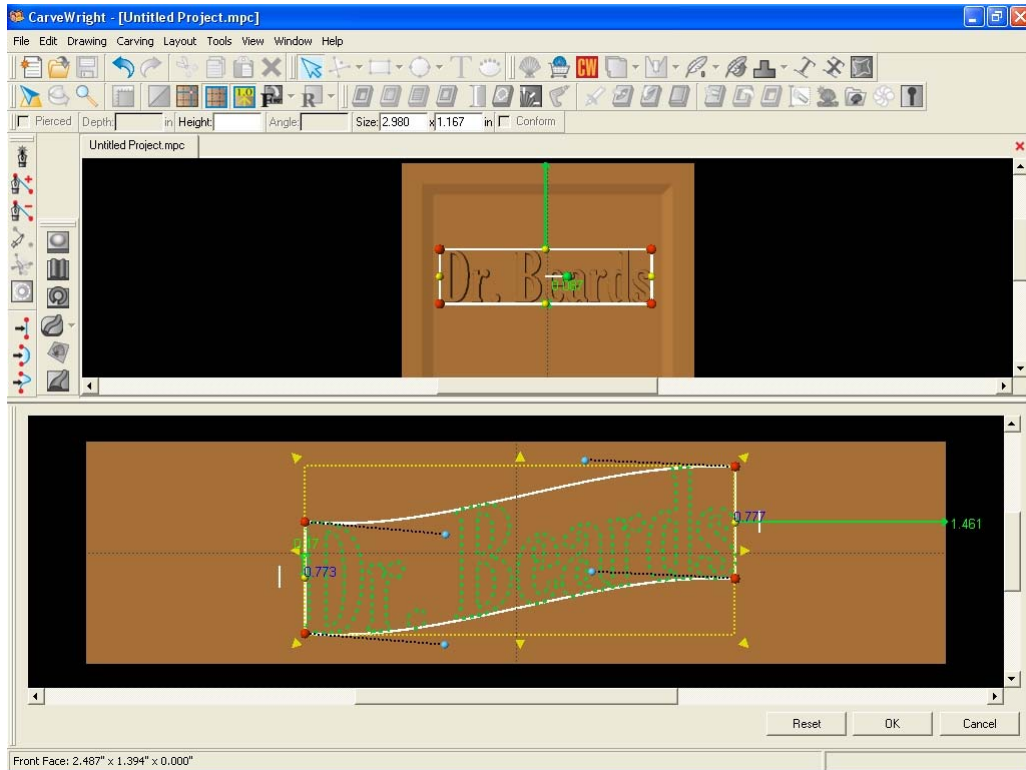


Do the same to line across the bottom of the text box

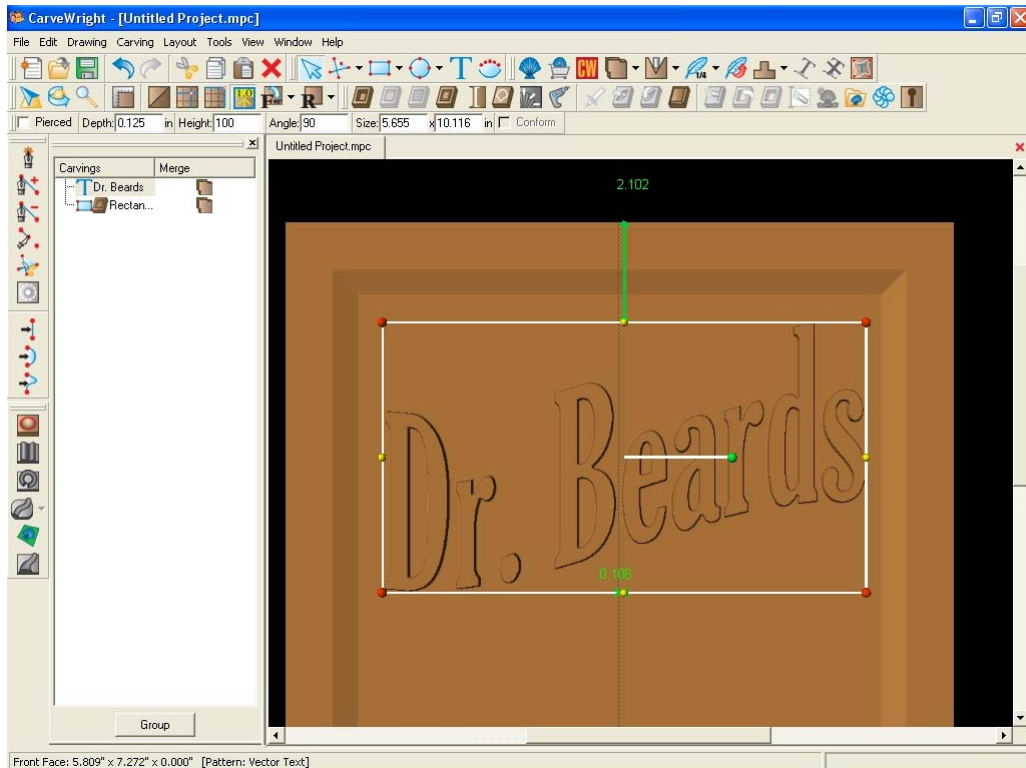




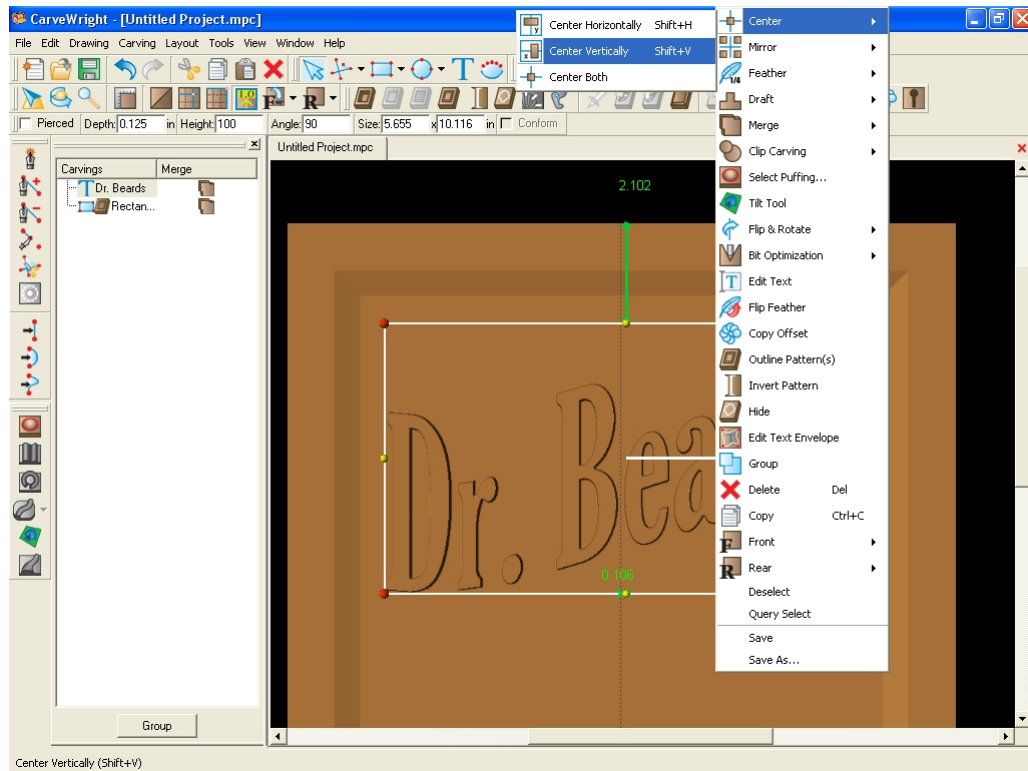
This an extremely powerful way to manipulate (or) morph existing elements into new and interesting shapes. This tool also works on patterns. Once happy with the new shape; click OK to proceed. The element can be returned to its original shape by clicking Reset at any point during the envelope modification.



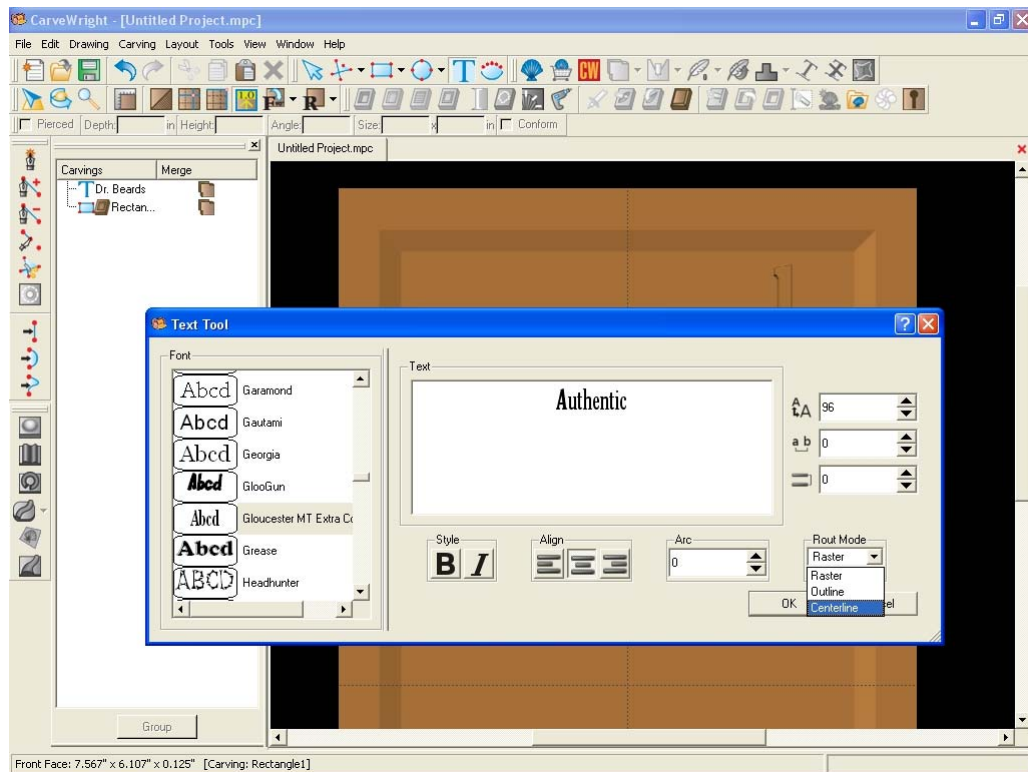
Back on the board view, use the yellow dot at the bottom of the text to stretch it vertically.



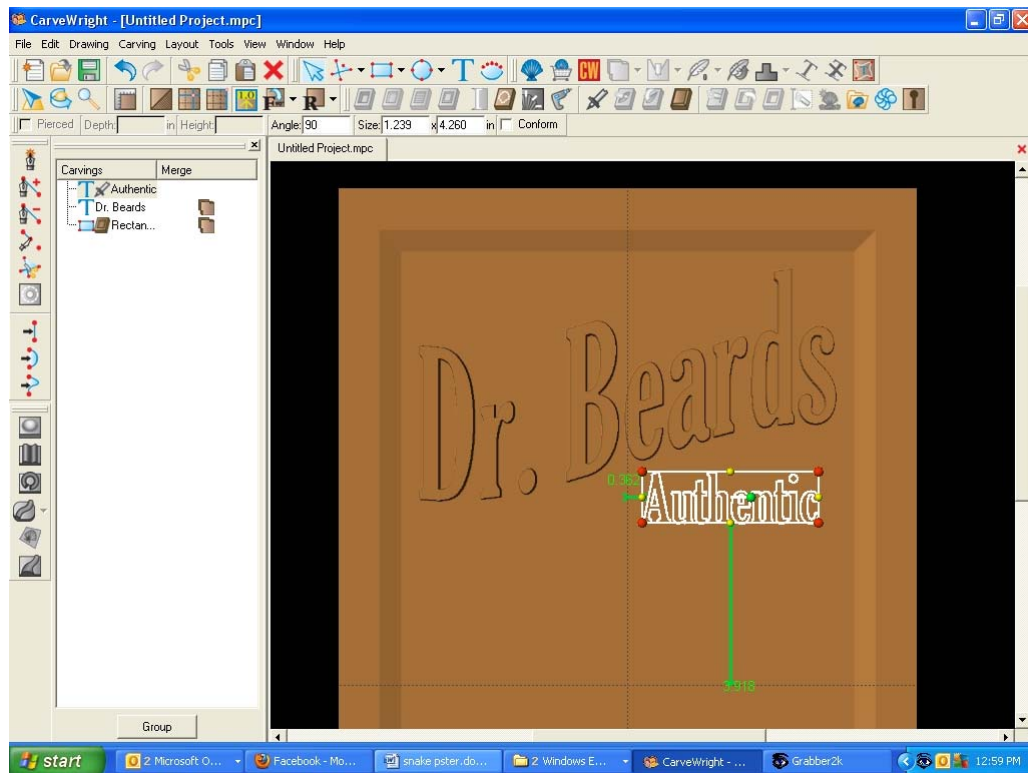
Now center the Text. Remember, we have everything rotated, so we will need to center it vertically instead of horizontally as it would be seen looking at the screen.



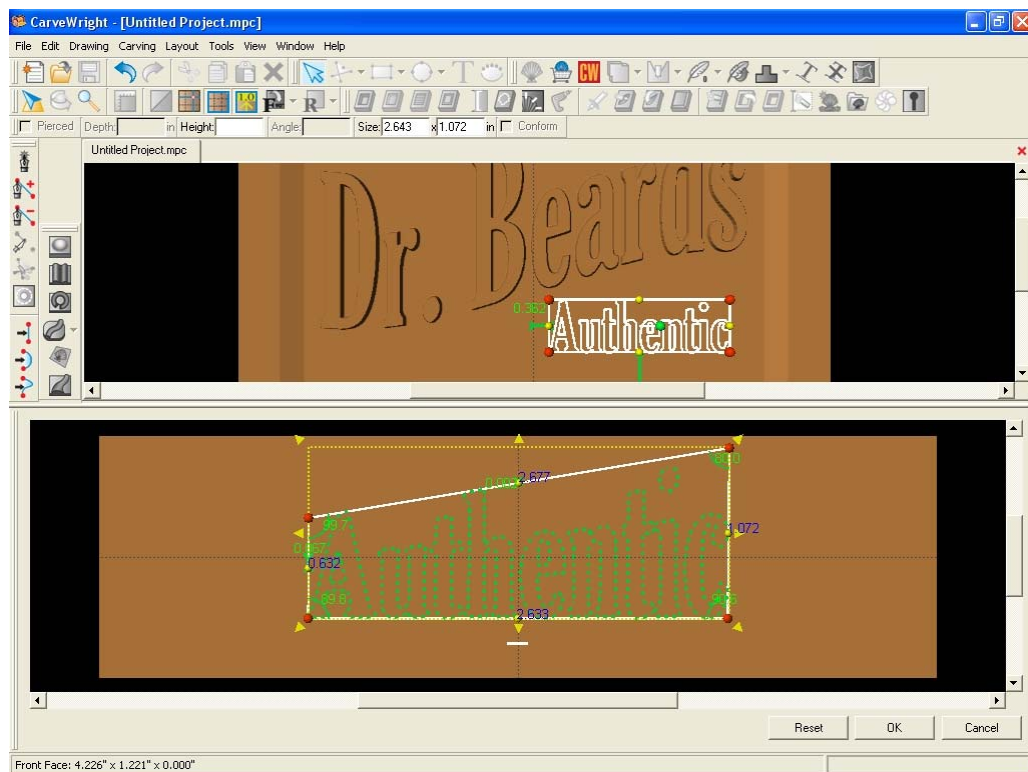
Next, select the Text tool again and type in "Authentic" using the same font as before. This time select Centerline carving mode and click OK.



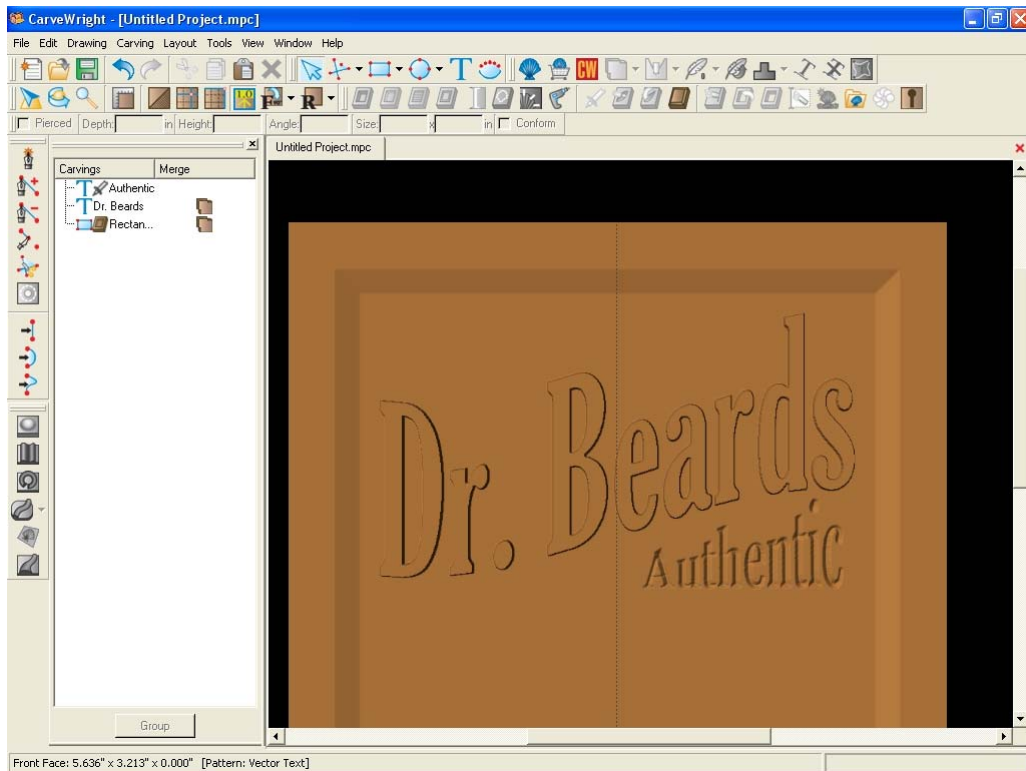
Rotate the text 90 degrees CCW, scale it, and position it under the Dr. Beards text.



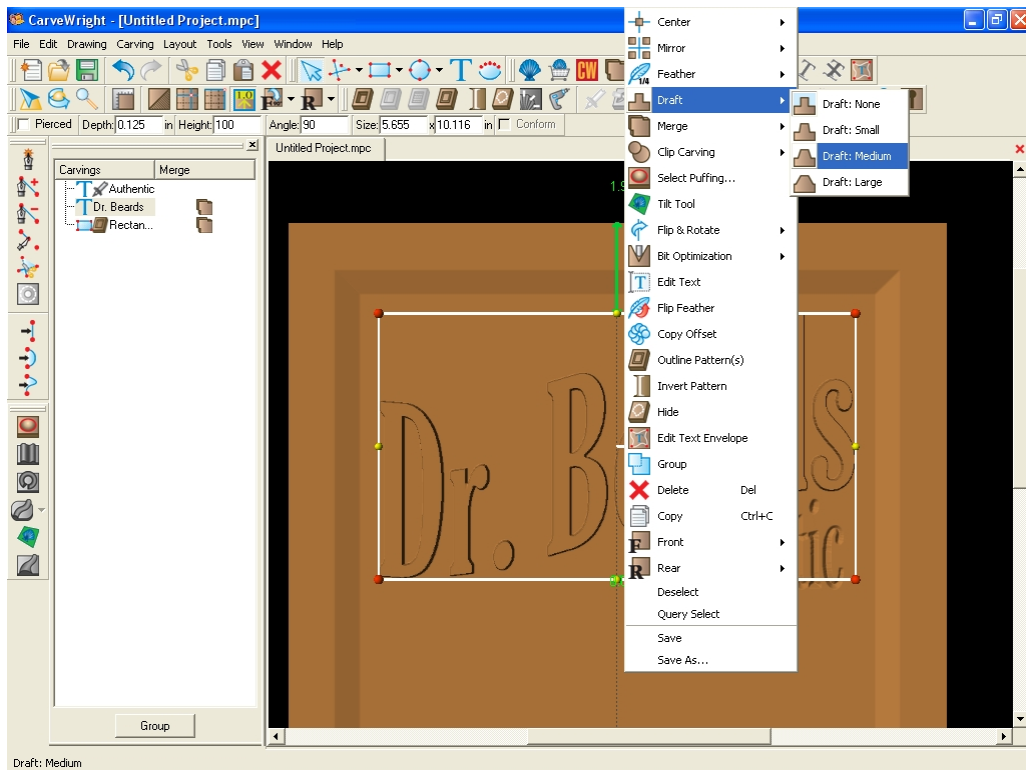
Select the Edit Envelope tool and move the top right red dot up and move the top left dot slightly down. This gives the text a wedge shape. Click to proceed.



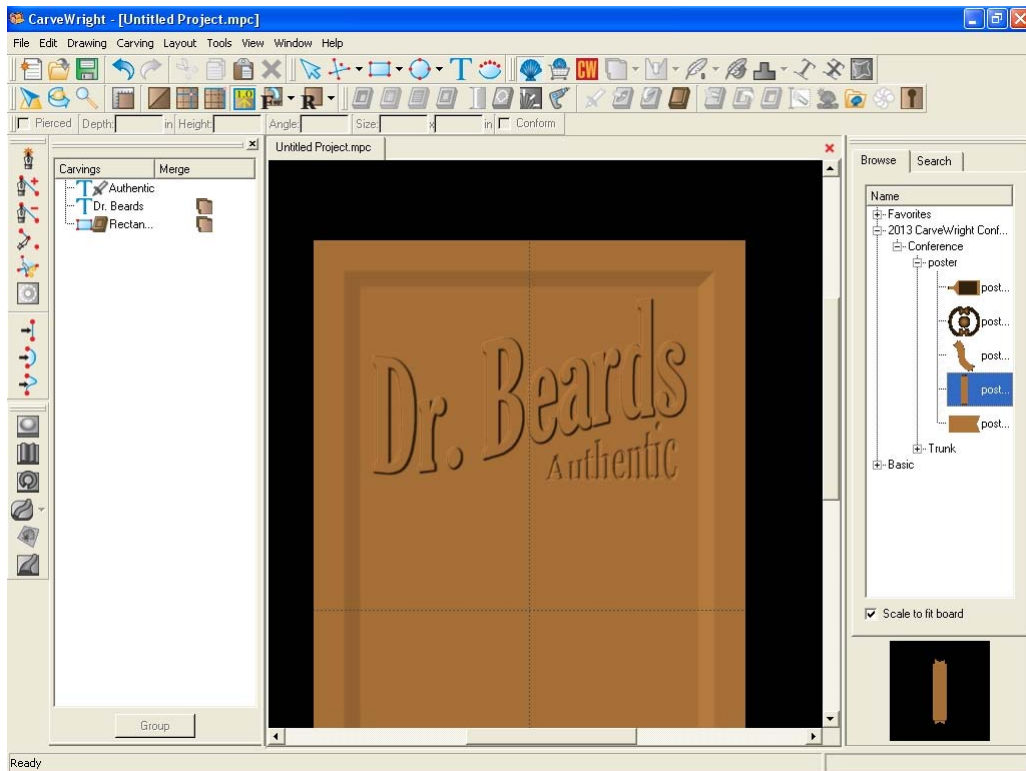
Scale the text to fit the space and click the Conform check box on the toolbar so that the text will be applied to the regions depth (and not at the board surface).



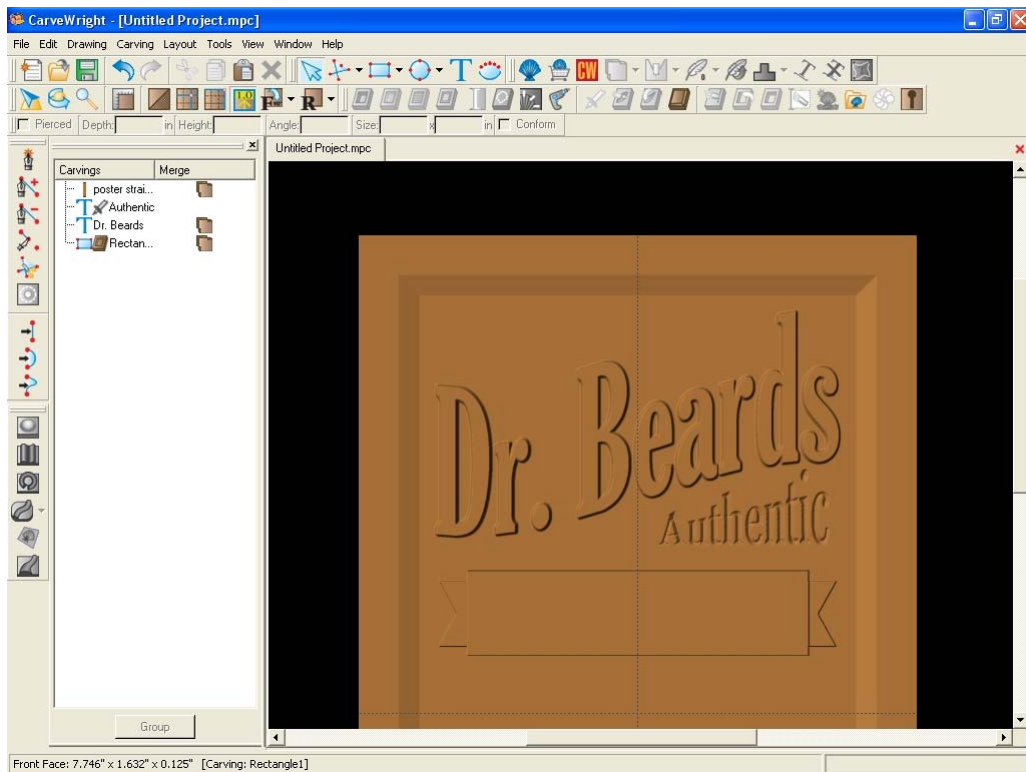
Select Dr. Beards text again and apply a medium draft to it.



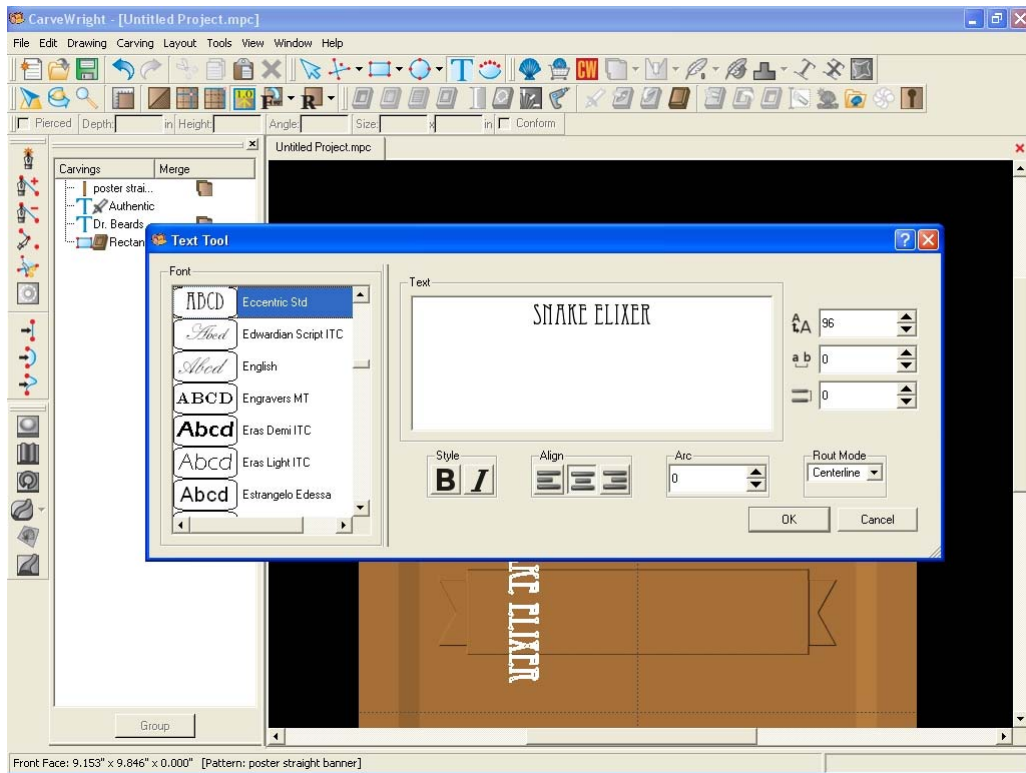
Open the pattern library and select the “Poster Straight Banner”.  
Place it on the workpiece with a click.



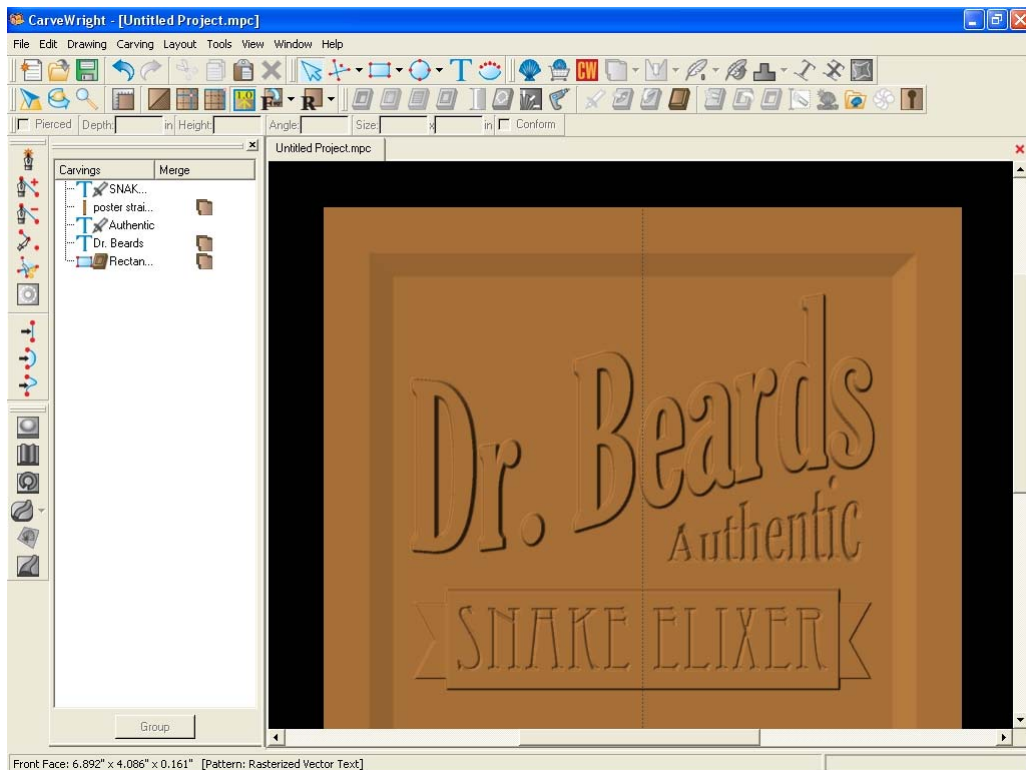
Scale the banner pattern, reduce its depth to .125, center it on the board, give it a medium draft, and position it under the existing text.



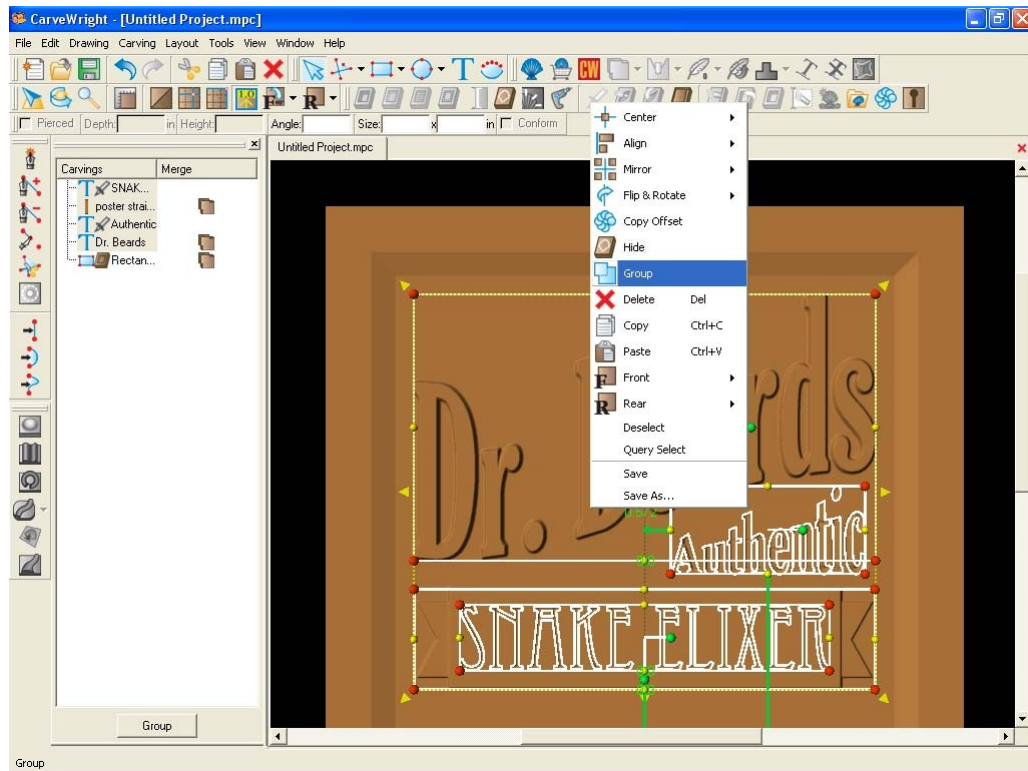
Select the Text tool and type in “SNAKE ELIXER” using the Eccentric Std.(or similar) font. This time select Centerline carving mode and click OK.



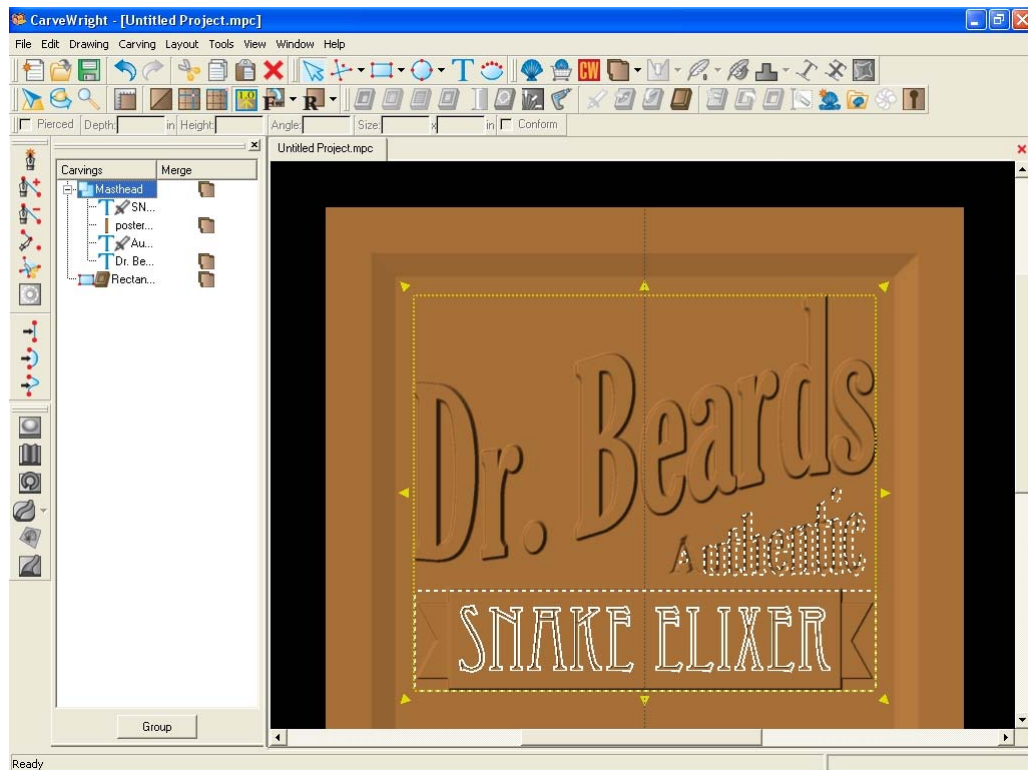
Rotate the text 90 degrees CCW, center it on the board, scale it to fit the banner, position it vertically on the banner, and fill the Conform check box on the toolbar.



Select the banner and the three instances of text using the Pointer tool or by selecting them individually in the Carving list. Right click on the selections and select Group.

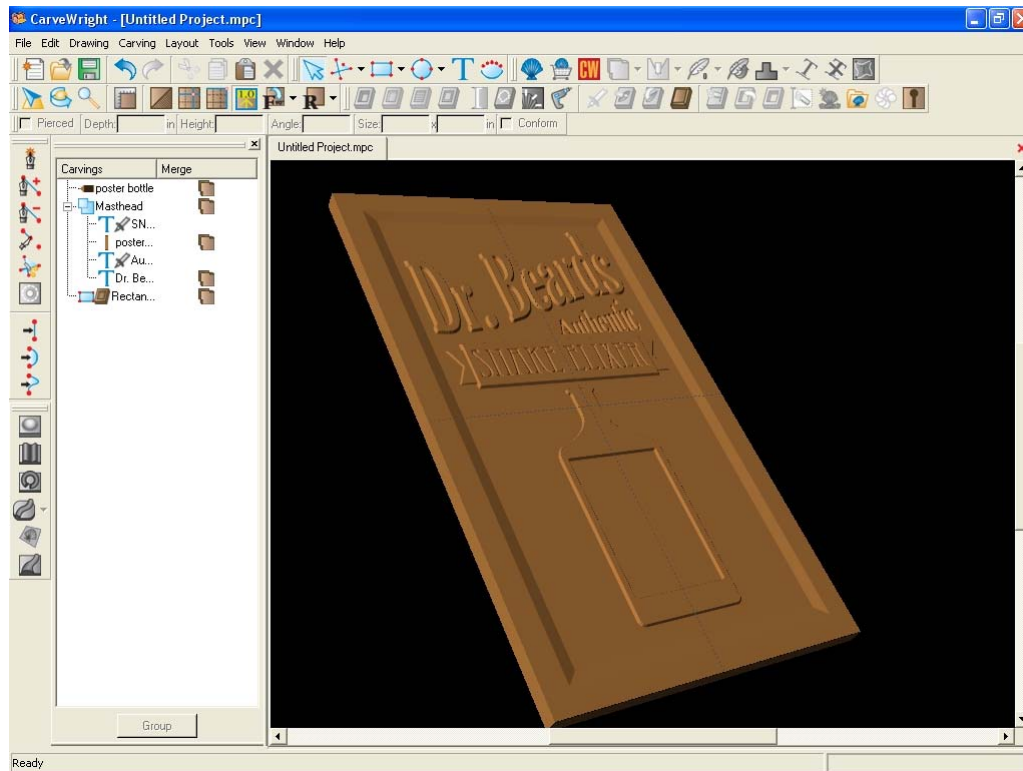


In the carving list you can now see the four elements grouped together. Click on the name "Group" and rename this group Masthead. Now that these elements are grouped, they can easily be moved together.

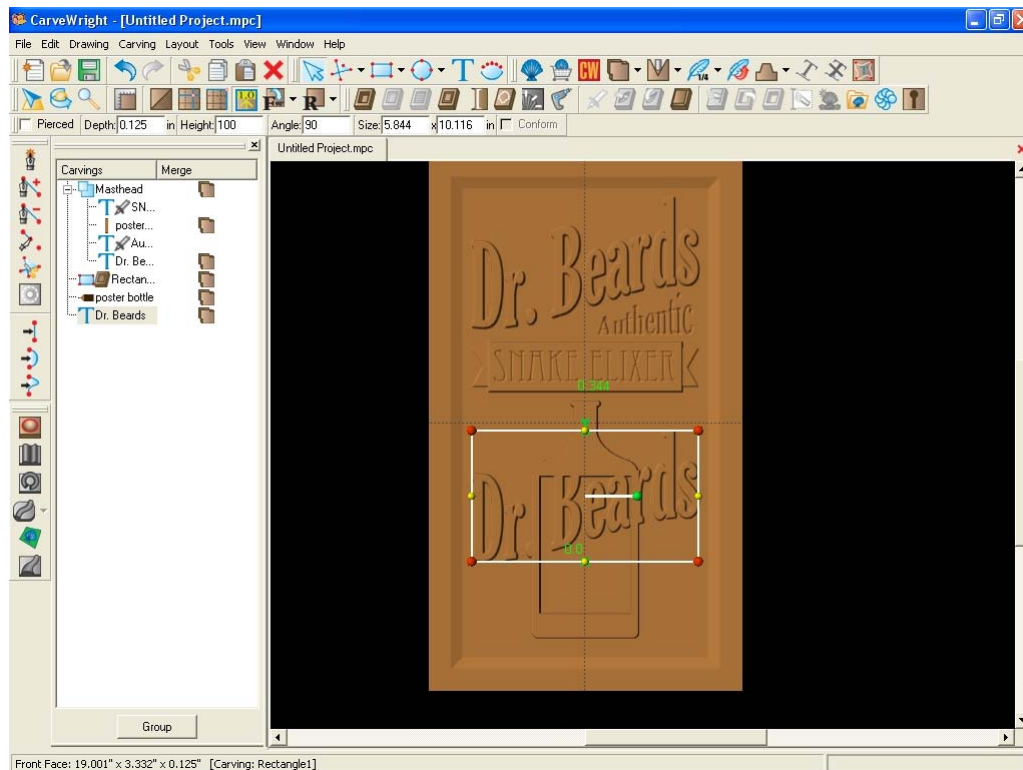


Open the pattern library and select the “Poster Bottle”.

Place it on the workpiece with a click. Scale the bottle, reduce its depth to .125, center it on the board, give it a medium draft, and position it under the existing composition.

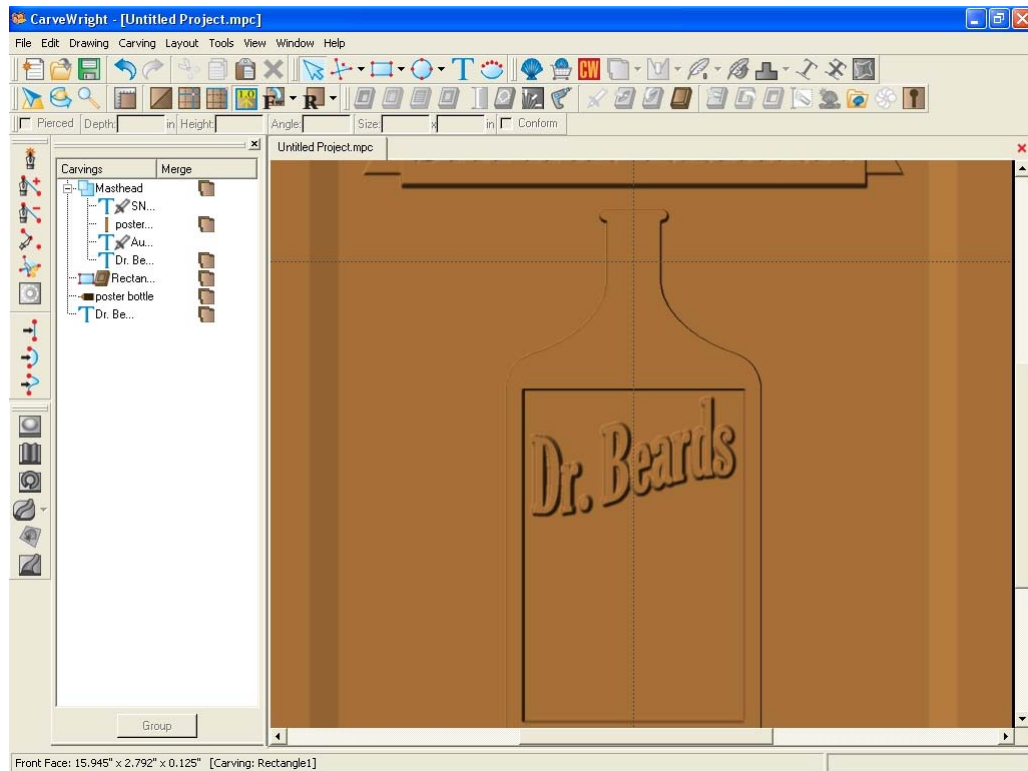


Copy the Dr. Beards text by clicking on it and pressing the Ctrl and c keys simultaneously. Move the pointer and then press the Ctrl and v keys simultaneously. This can also be done in the Edit menu.

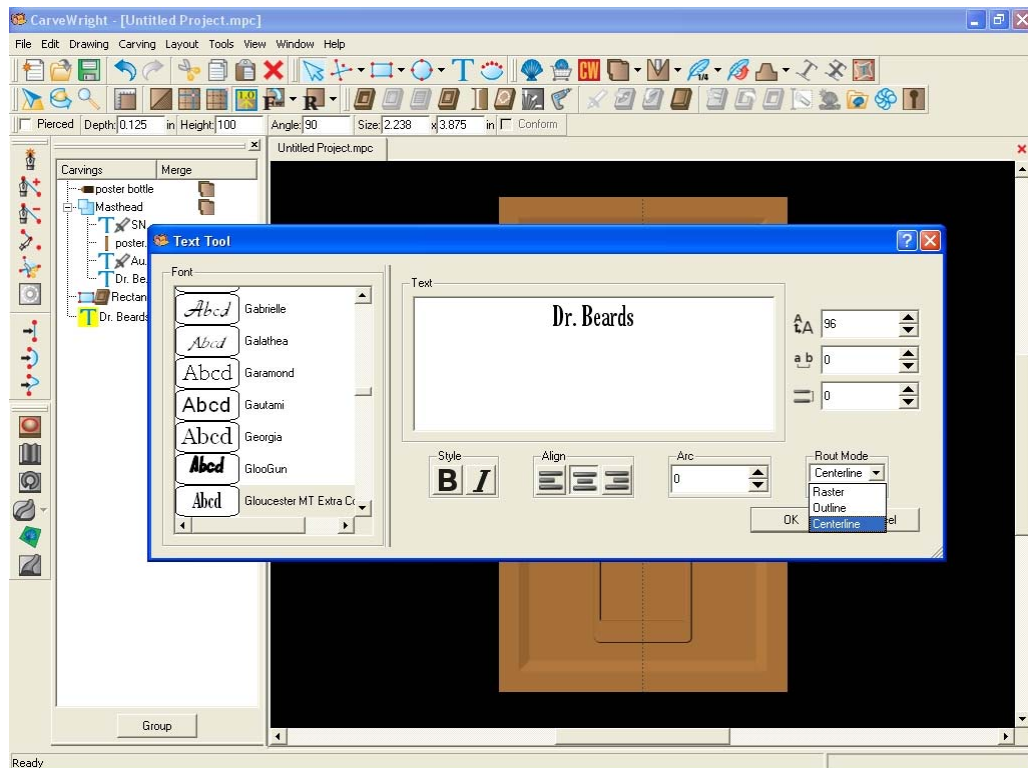




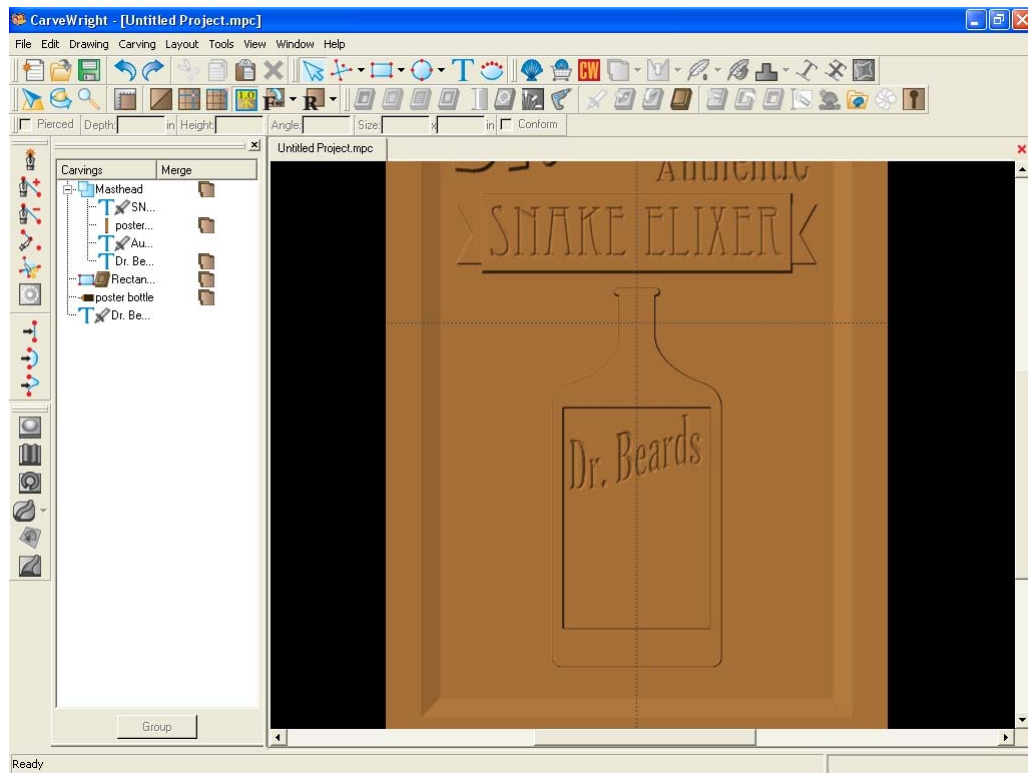
Scale the text to fit on the bottle label and position it near the top of the label.



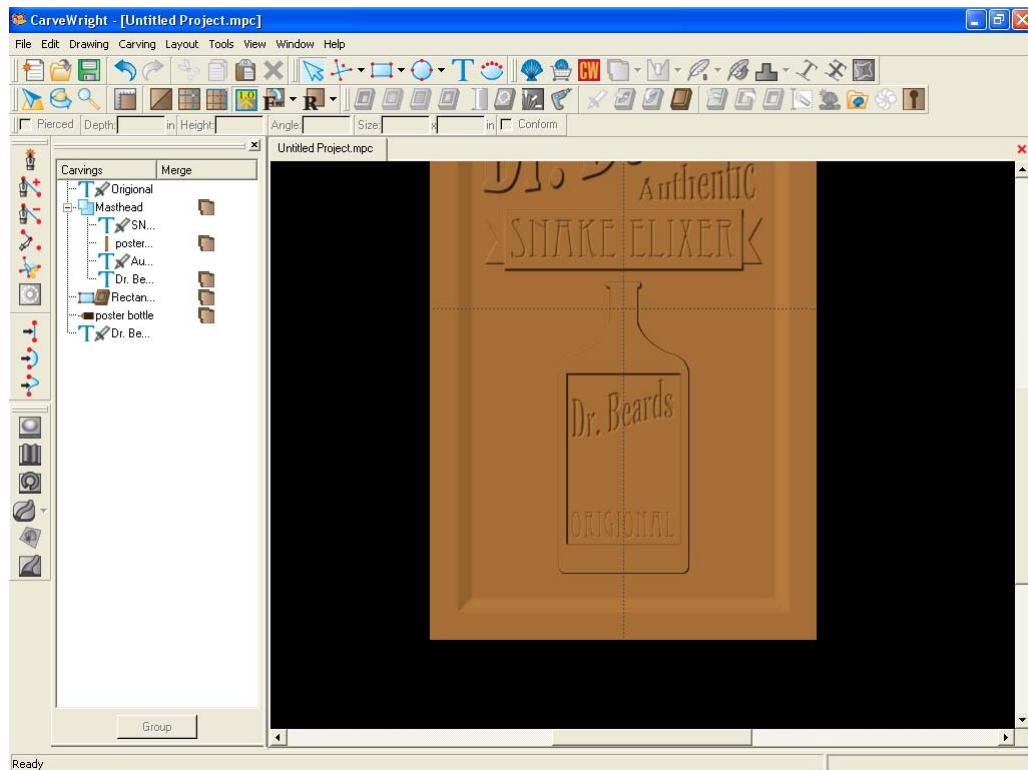
With the text still highlighted, select the Text icon and change the carving type to Centerline.



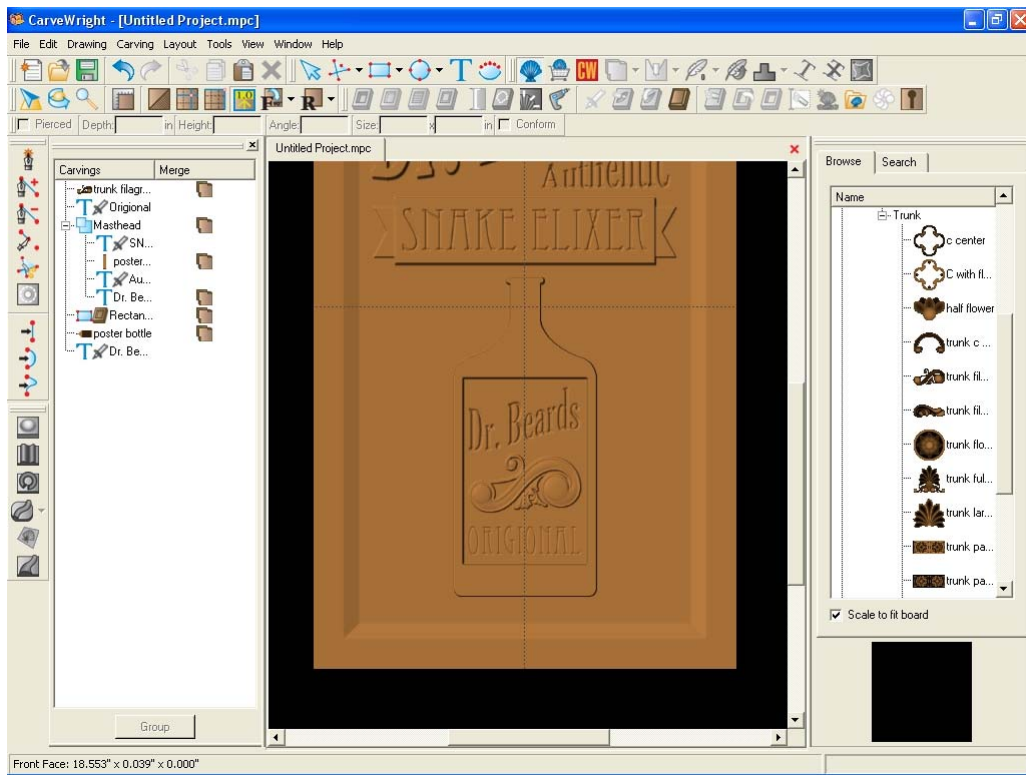
Fill the Conform check box on the toolbar so that it is placed on the background region.



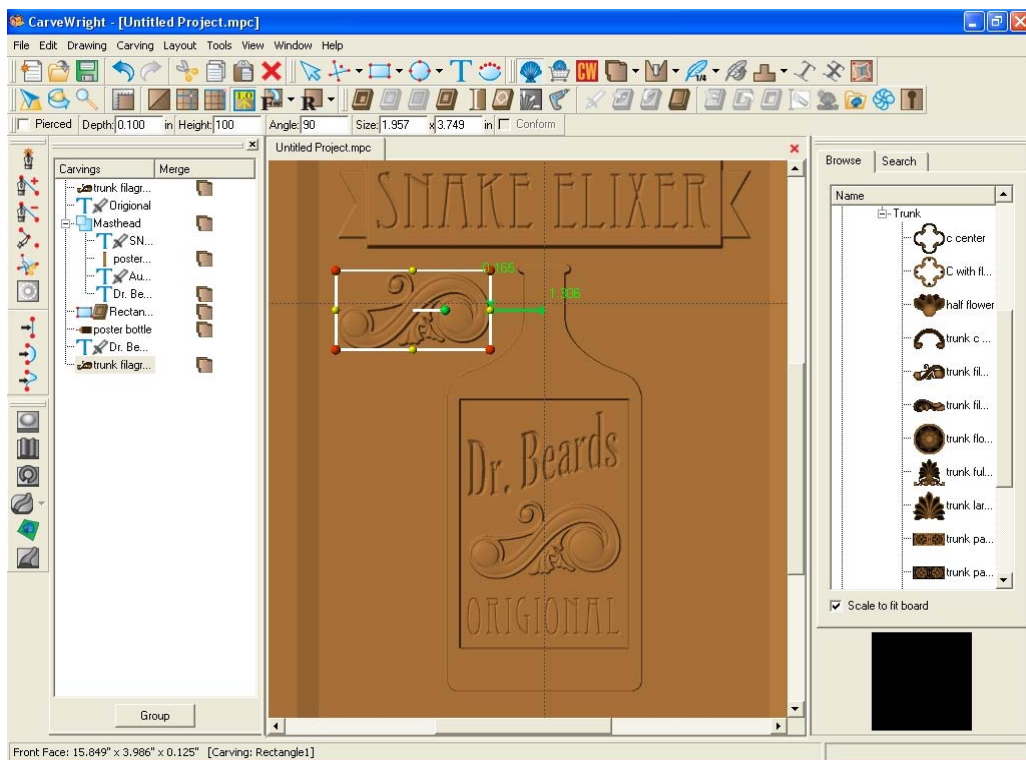
Create the second part of the bottle label by placing "Original" in Eccentric Std. (or similar) font. Rotate, center, position, centerline, bold and conform the text. You could also copy and paste the SNAKE ELIXER text and modify it accordingly.



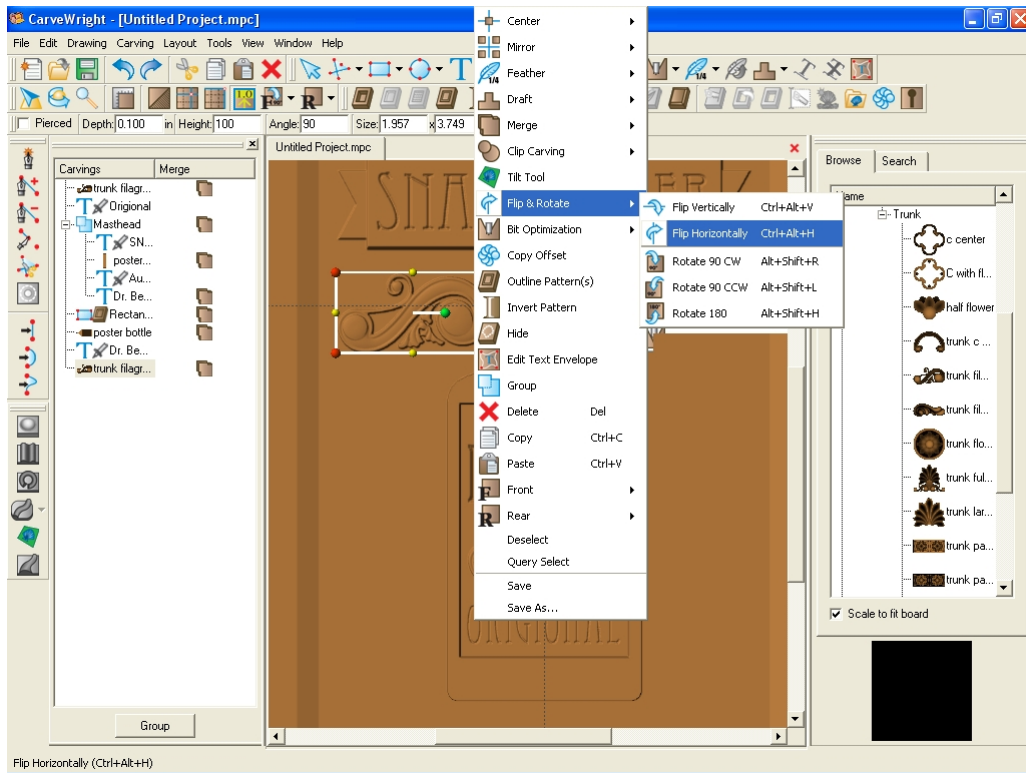
Open the pattern library and select the “Trunk Filigree 1”. Place it on the workpiece with a click. Rotate the filigree, scale it to fit the label, reduce its depth to .100”, center it on the board, give it a medium draft, and position it on the bottle label.



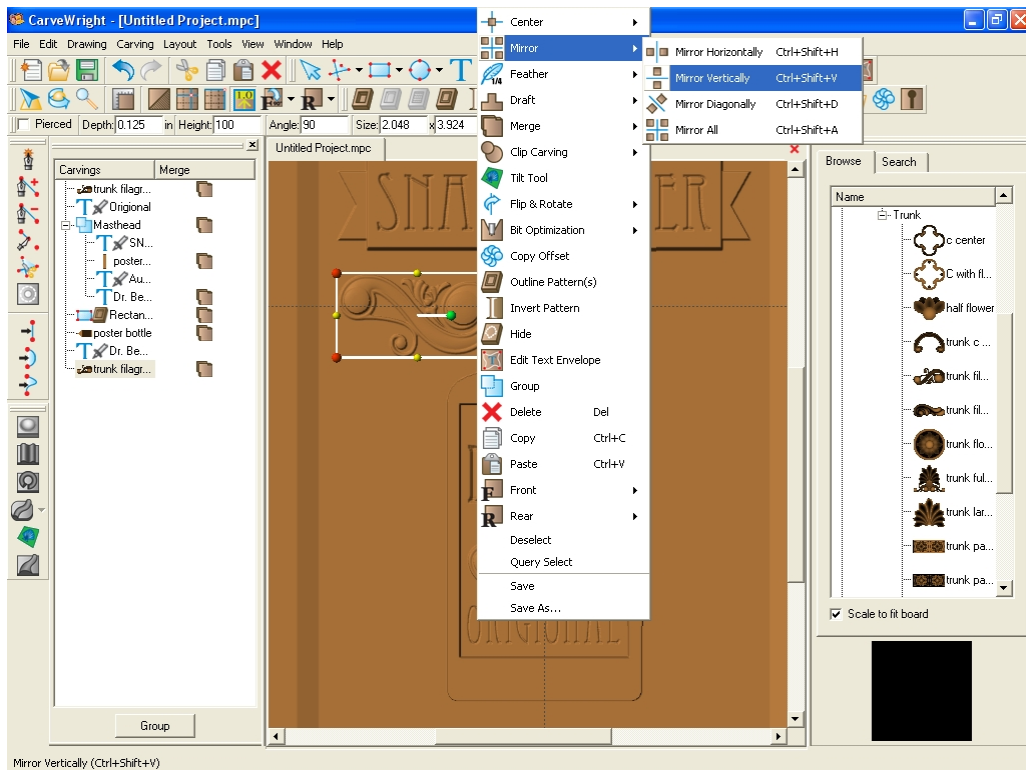
Copy the filigree from the label and paste it above left of the bottle (you will have to remove the centering constraint if you use a copy). Increase its height to .125”.

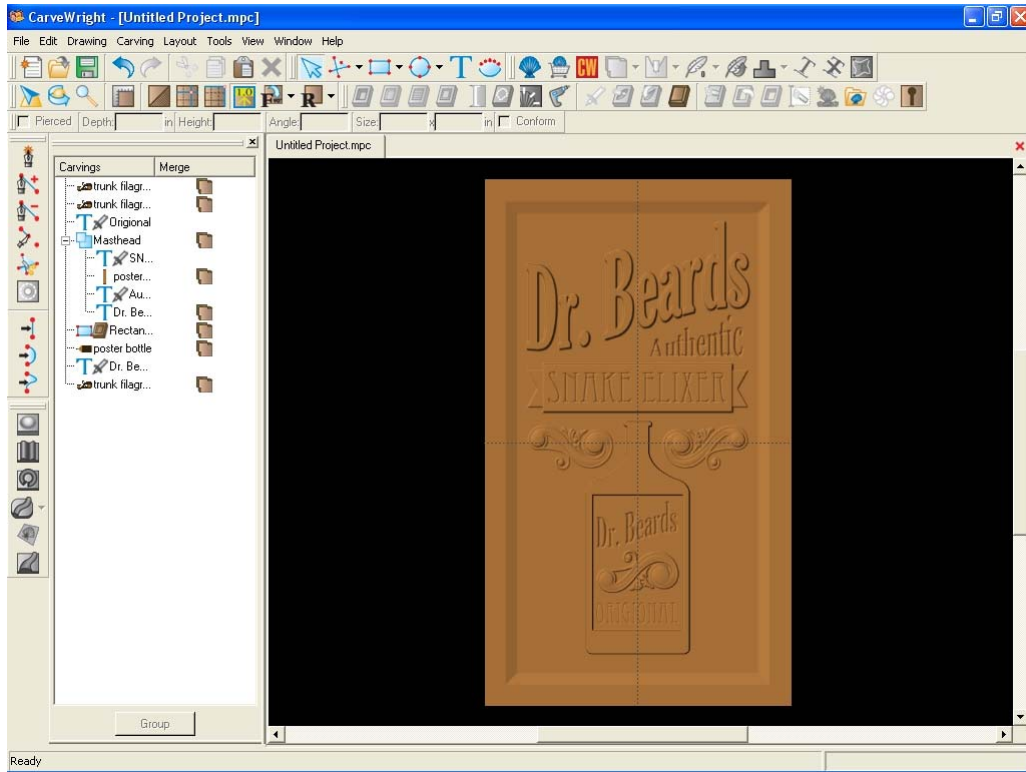


Scale and position the filigree relative to the bottle. Flip the filigree across the horizontal axis (remember we have rotated the board view).

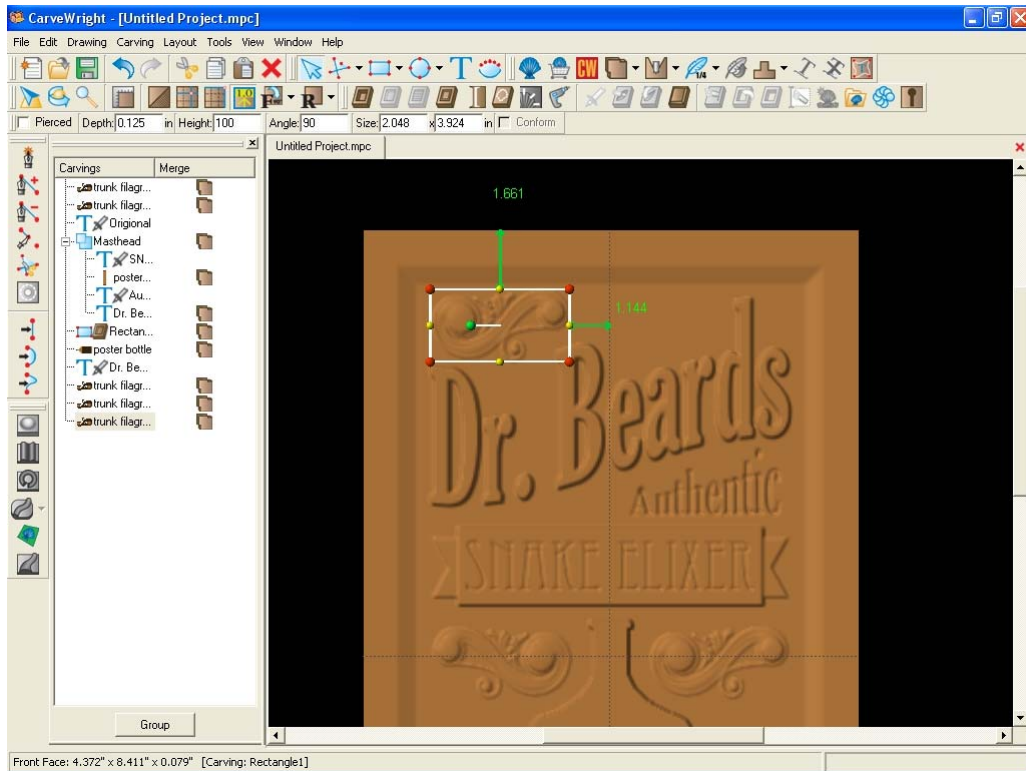


Mirror the filigree across the center of the board.

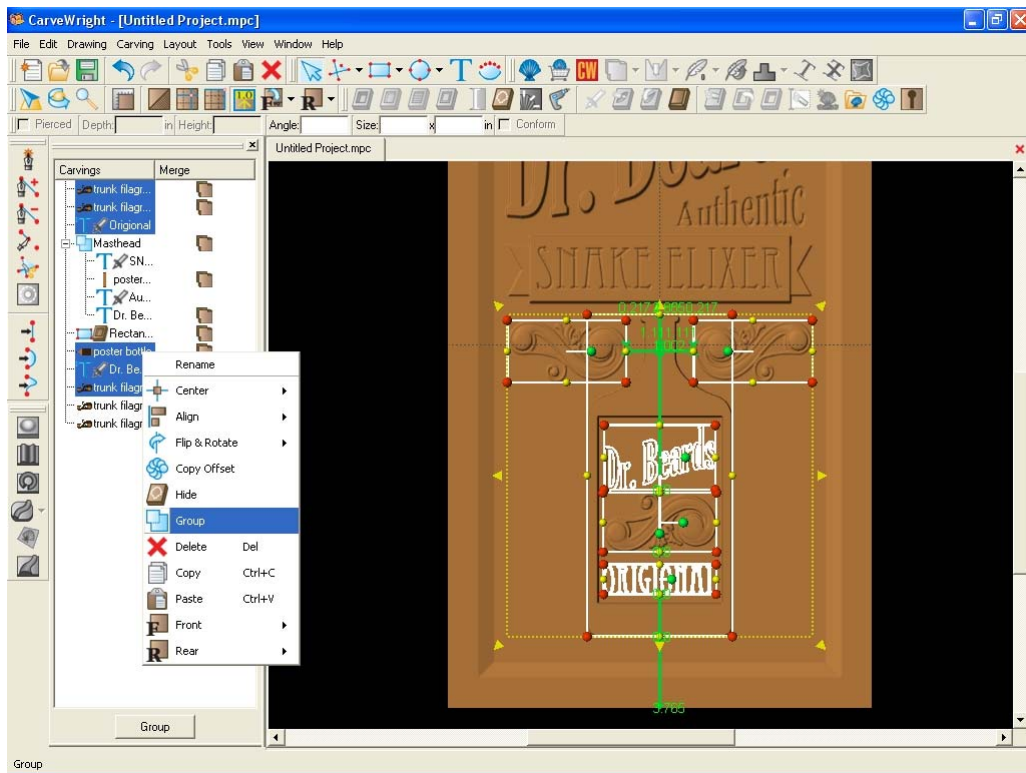




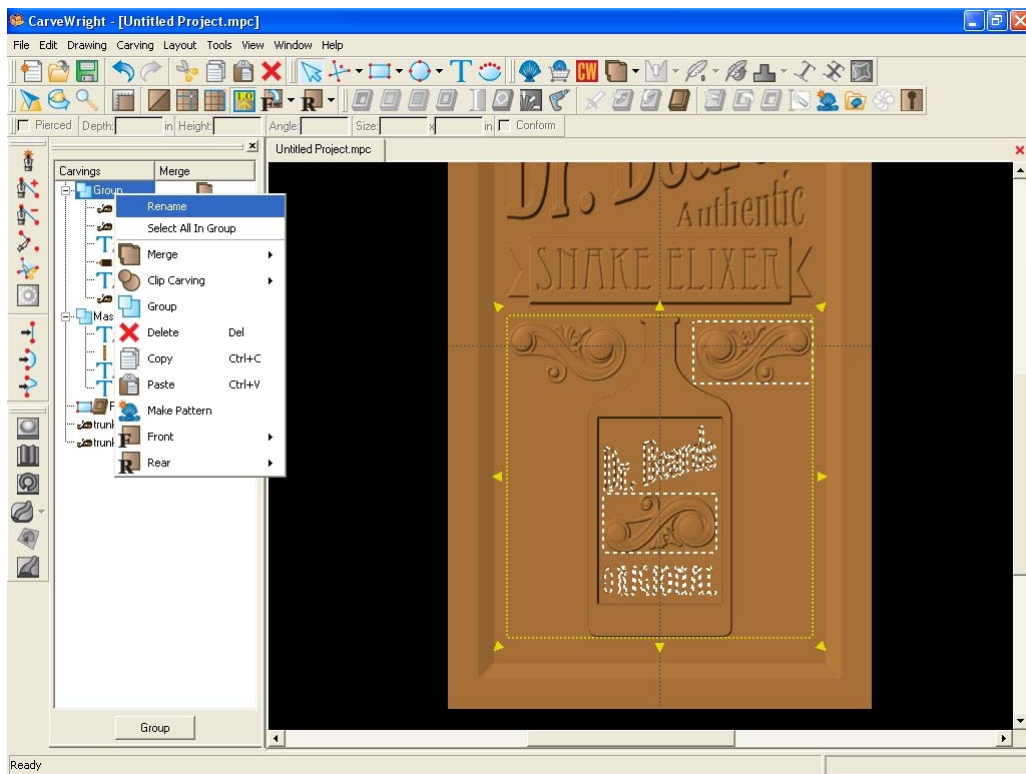
Copy the left filigree, paste it, move it to the upper left corner of the sign and Flip it across the vertical axis.



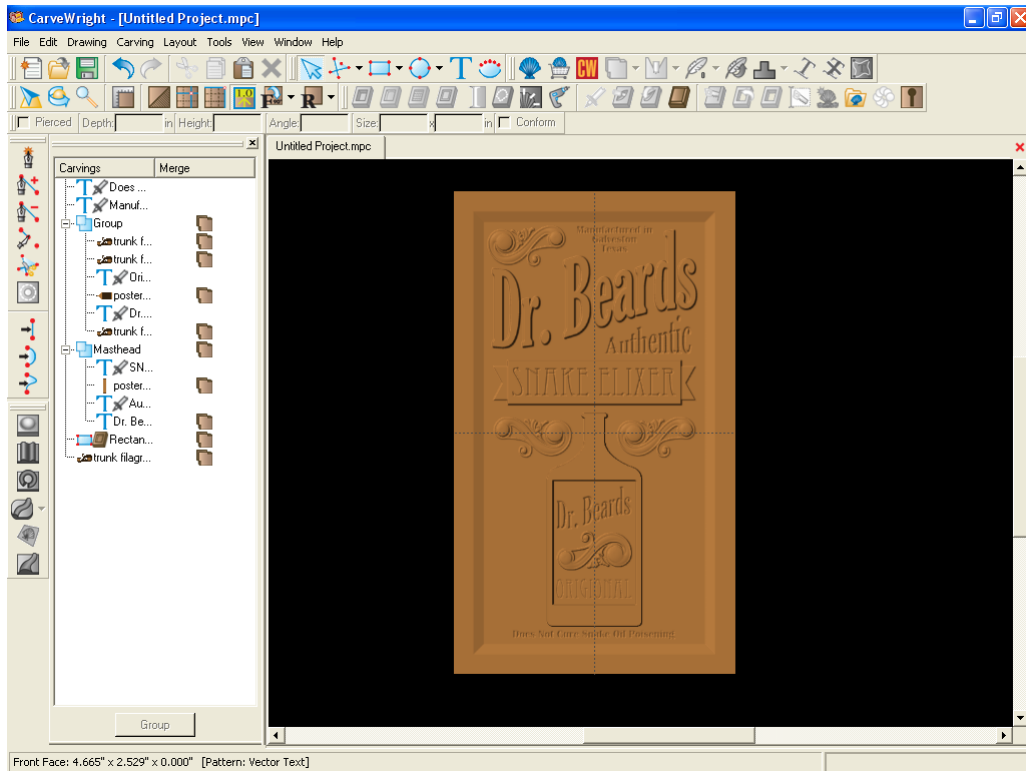
Select all of the elements of the bottle and Group them.



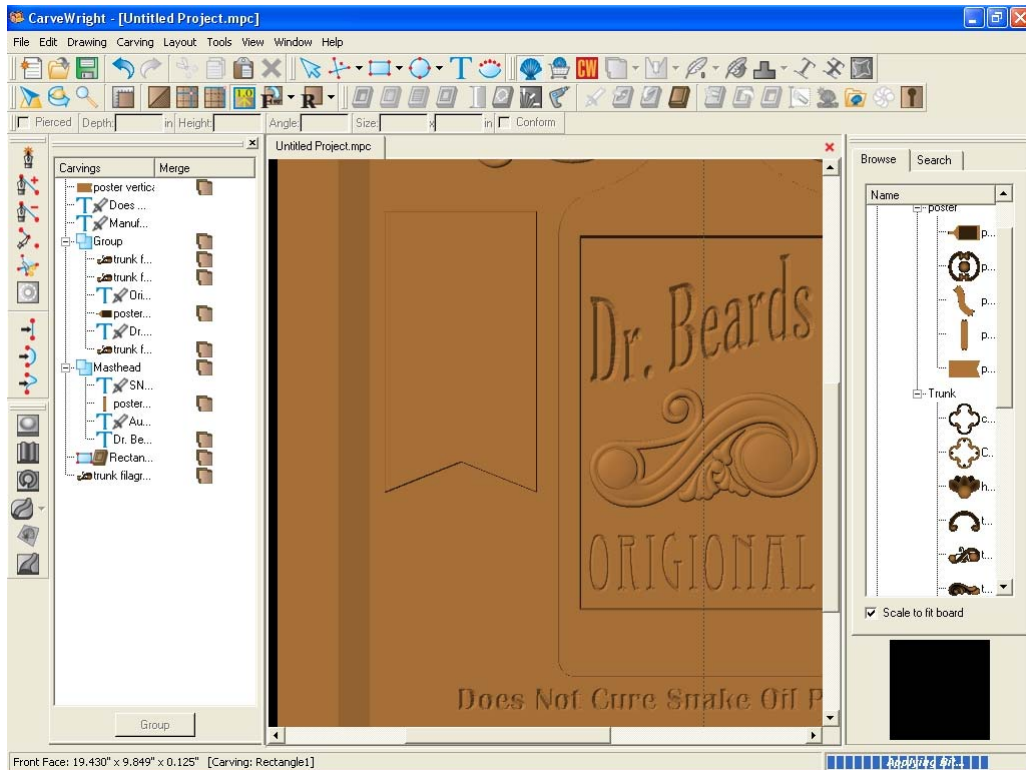
Change the name of the group to Bottle.



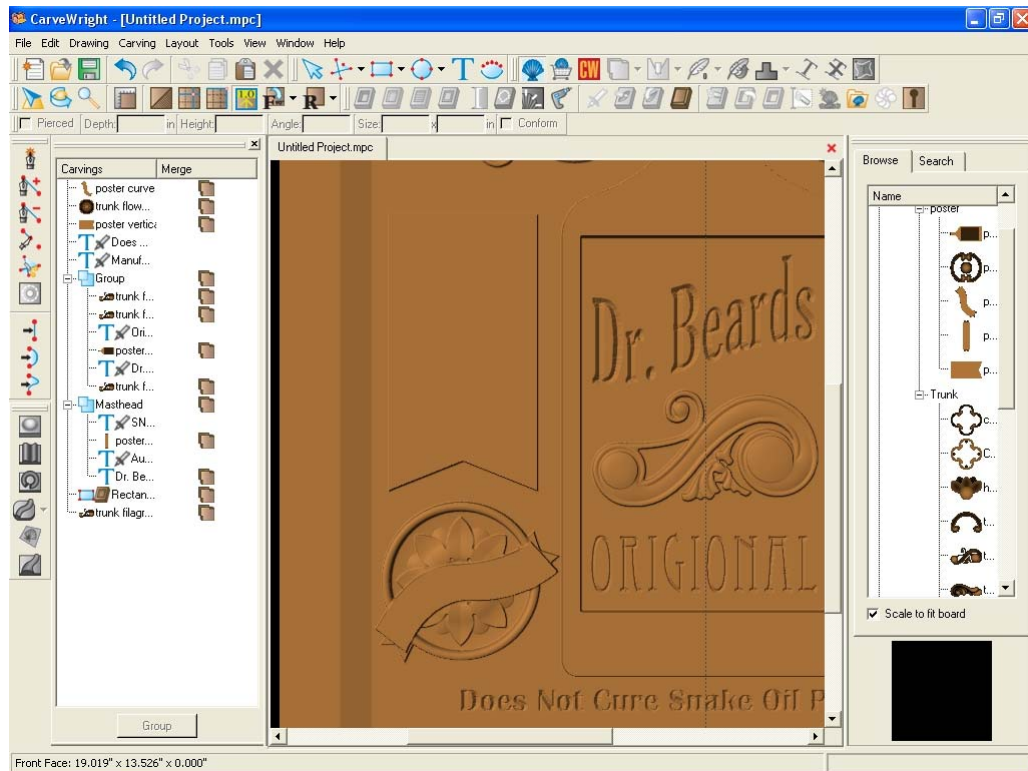
Add centerline text at top and bottom of sign.



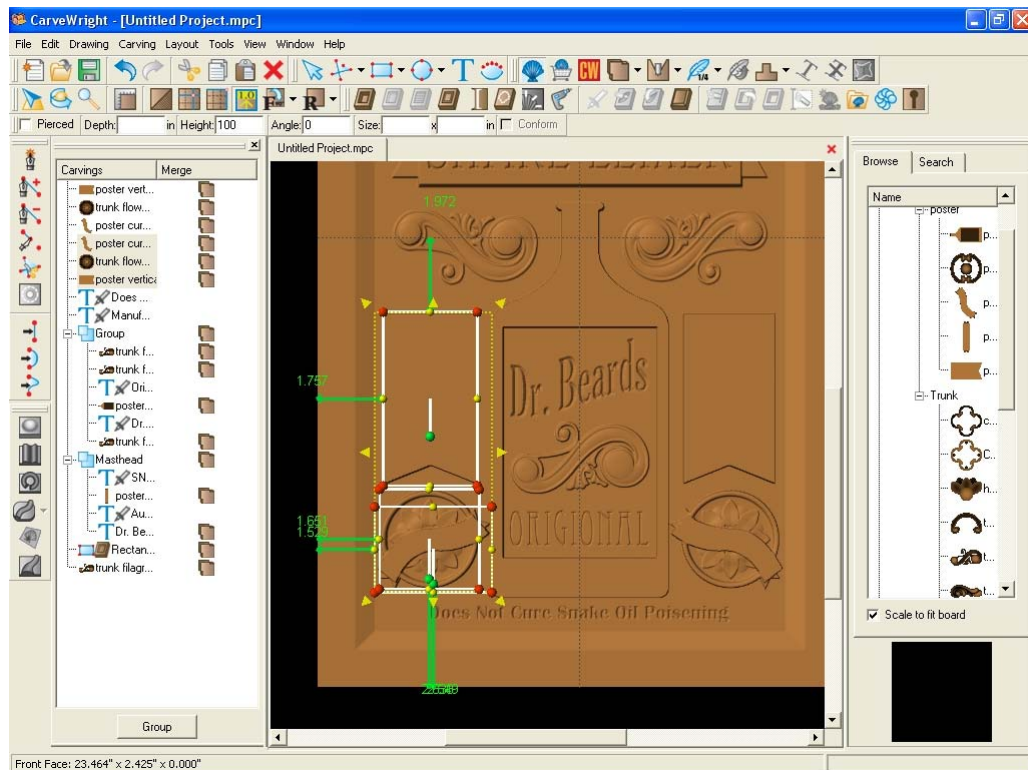
Open the pattern library and select the “Poster Vertical Banner”  
Place it on the workpiece with a click. Scale the banner, reduce its depth to .125, reduce its height to 10, give it a medium draft, and position it left of the bottle.



Open the pattern library and select the “Poster Curve Banner” and “Trunk Flower Rosette”. Place them on the workpiece with a click. Scale, reduce depth to .125, assign medium draft, and position them left of the bottle.

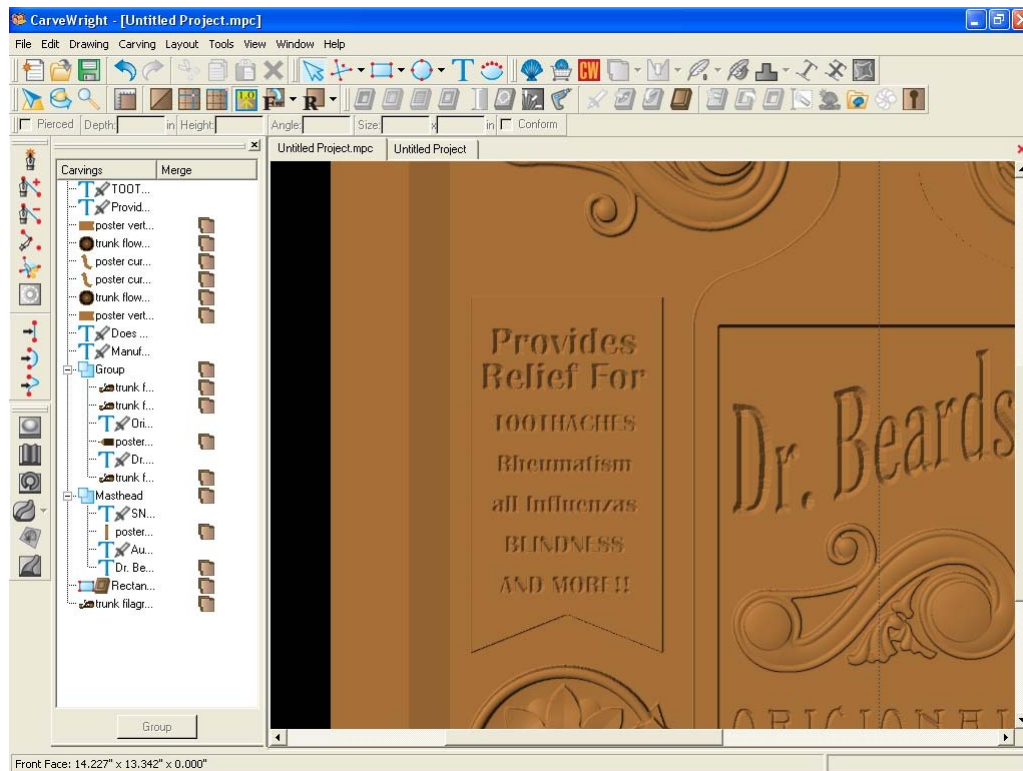


Mirror the three patterns just placed across the Horizontal axis.

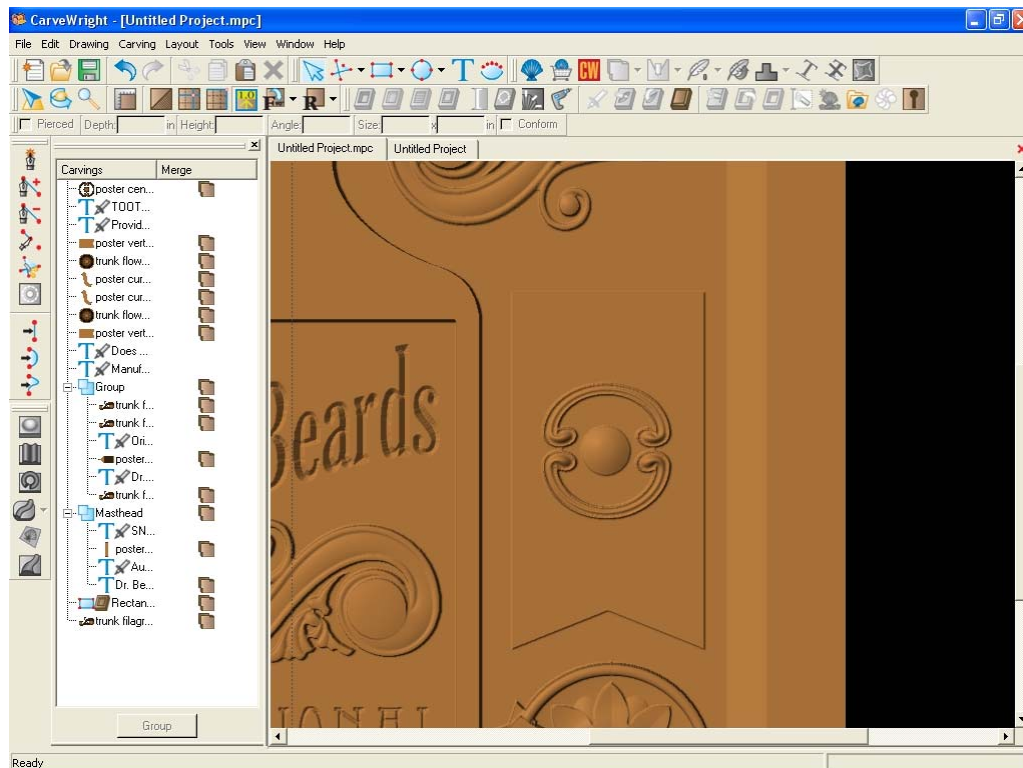




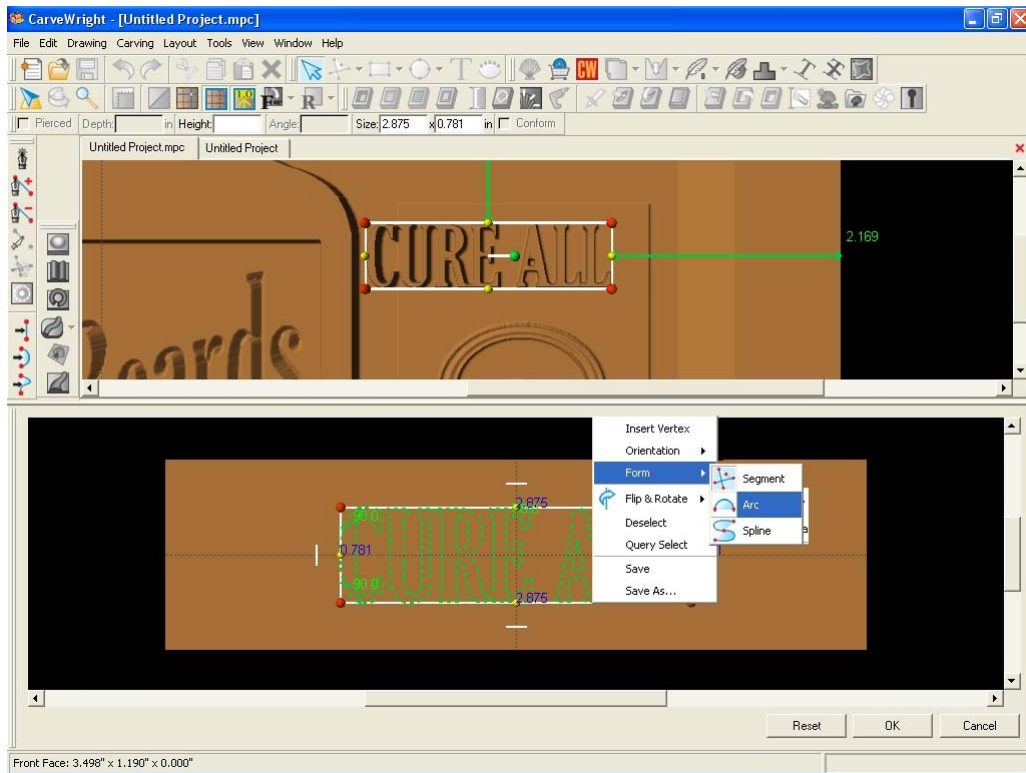
Place centerline text in left banner.



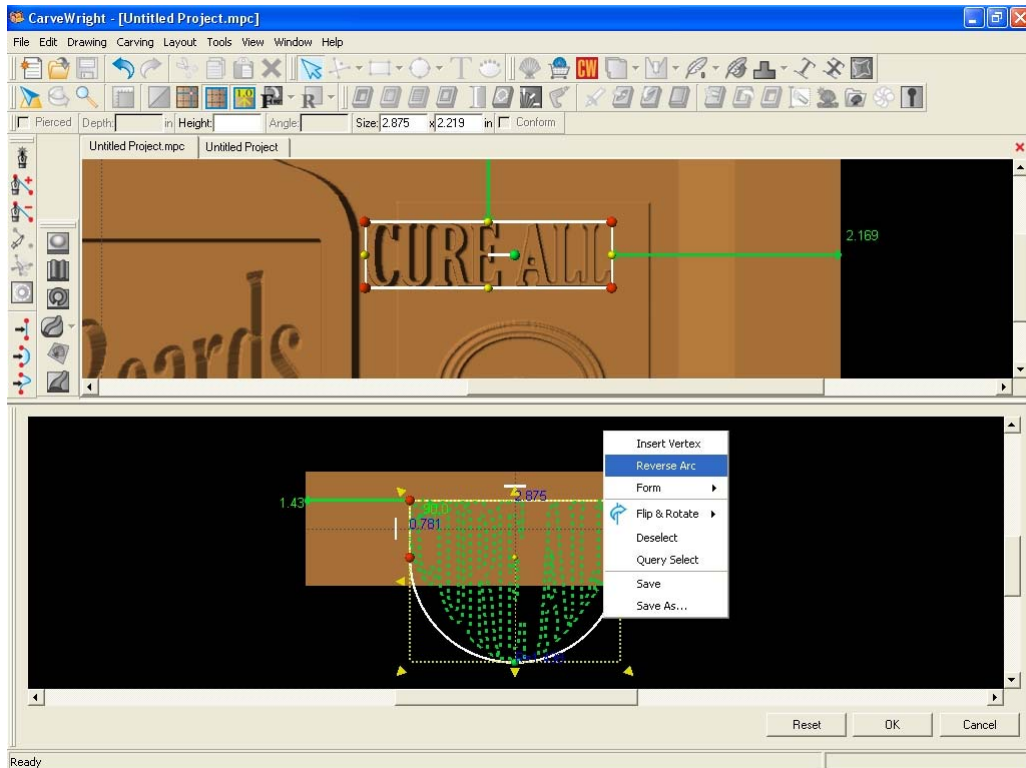
Place the "Center Element" pattern onto the right banner. Scale, reduce depth to .100, increase height to 999, assign medium draft, and position.



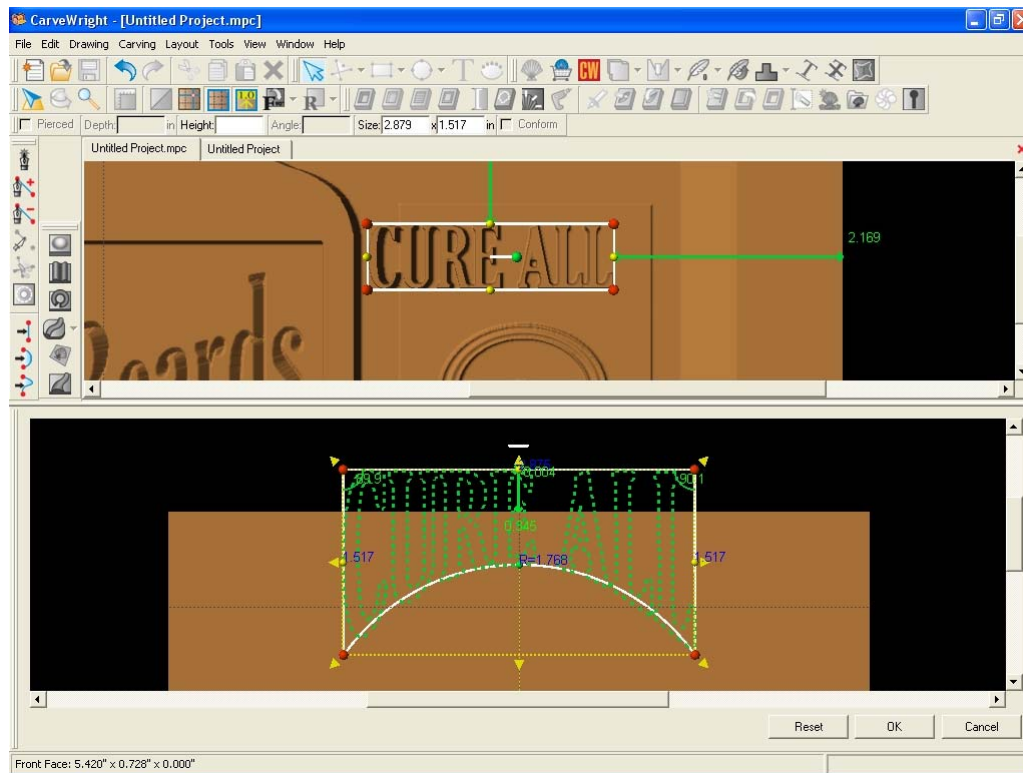
Place raster “CURE ALL” text. Rotate, scale, reduce depth to .125, increase height to 999, assign medium draft, and position. Select the Edit Envelope tool and change the bottom edge of the text box to an arc.



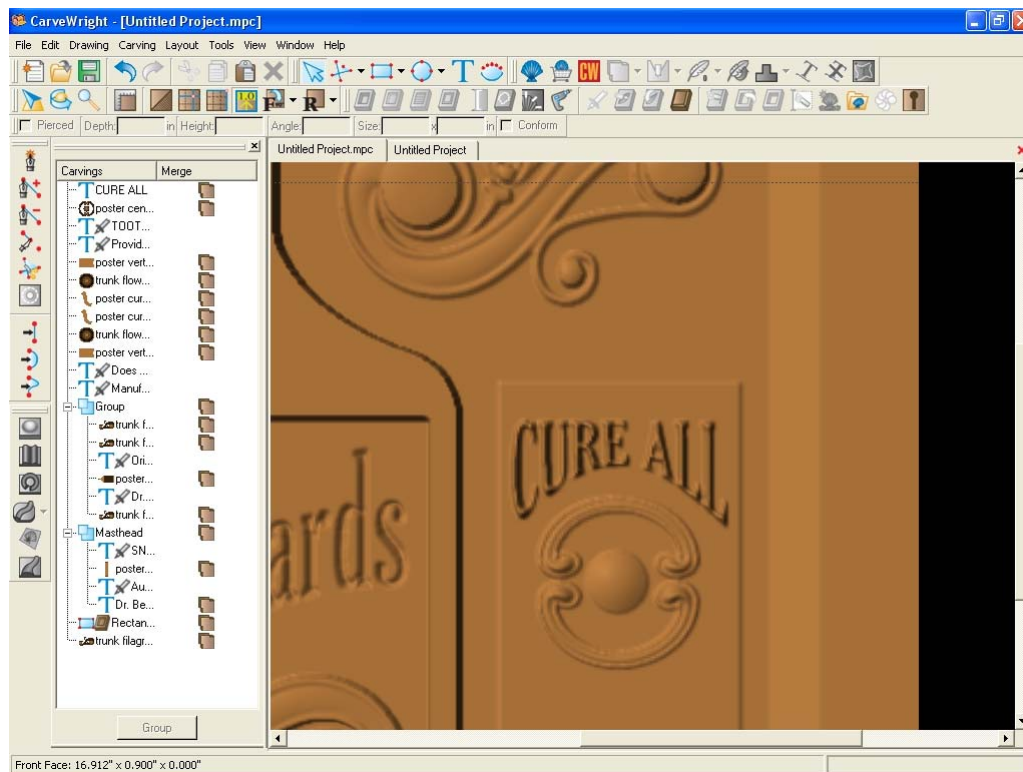
The arc is in the wrong direction so right click and select Reverse Arc.



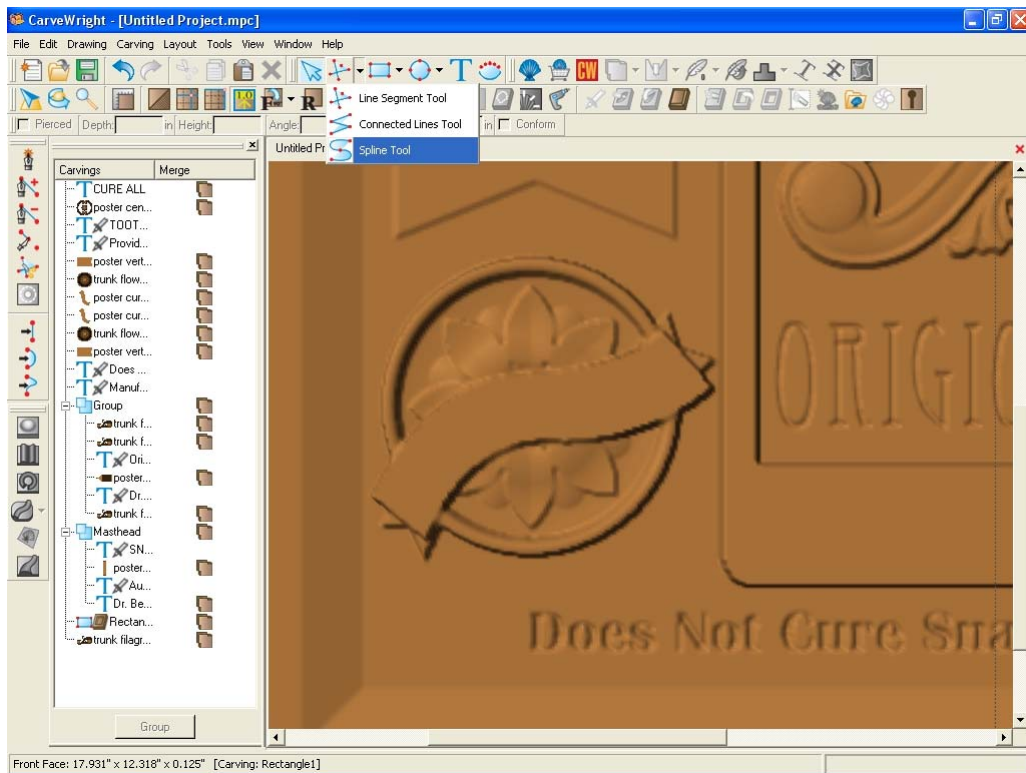
Tweak the arc radius and height of text to get the right look. Click OK.



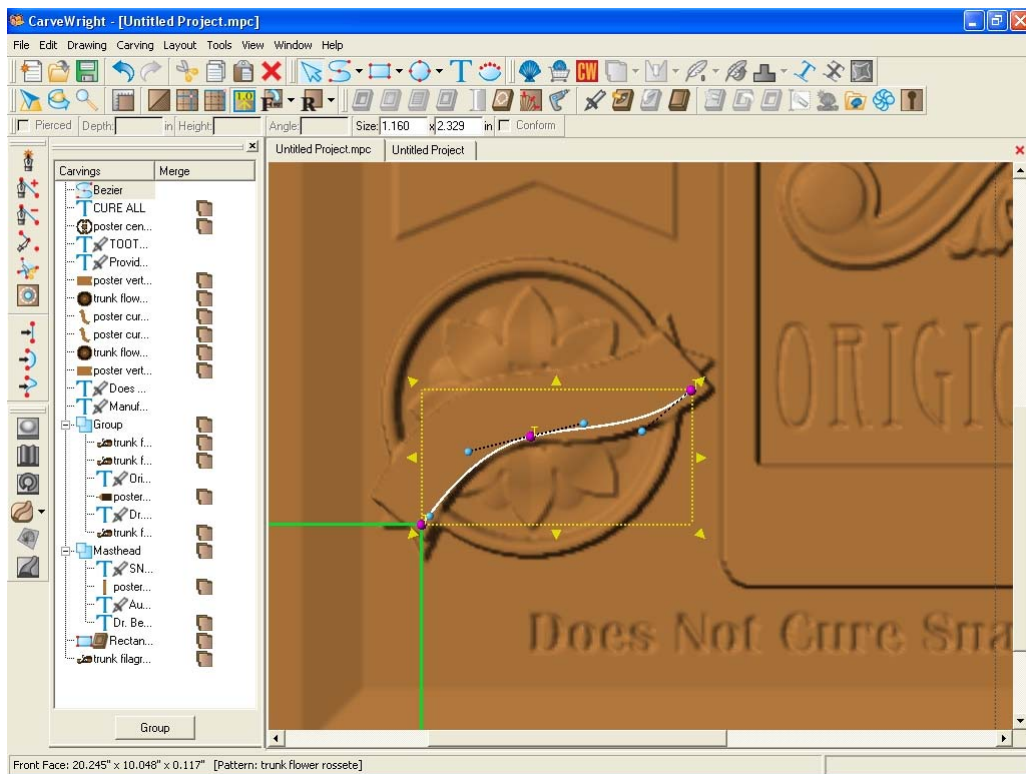
Stretch the box. Repeat for the "BLEND" text on the bottom side of the center element.



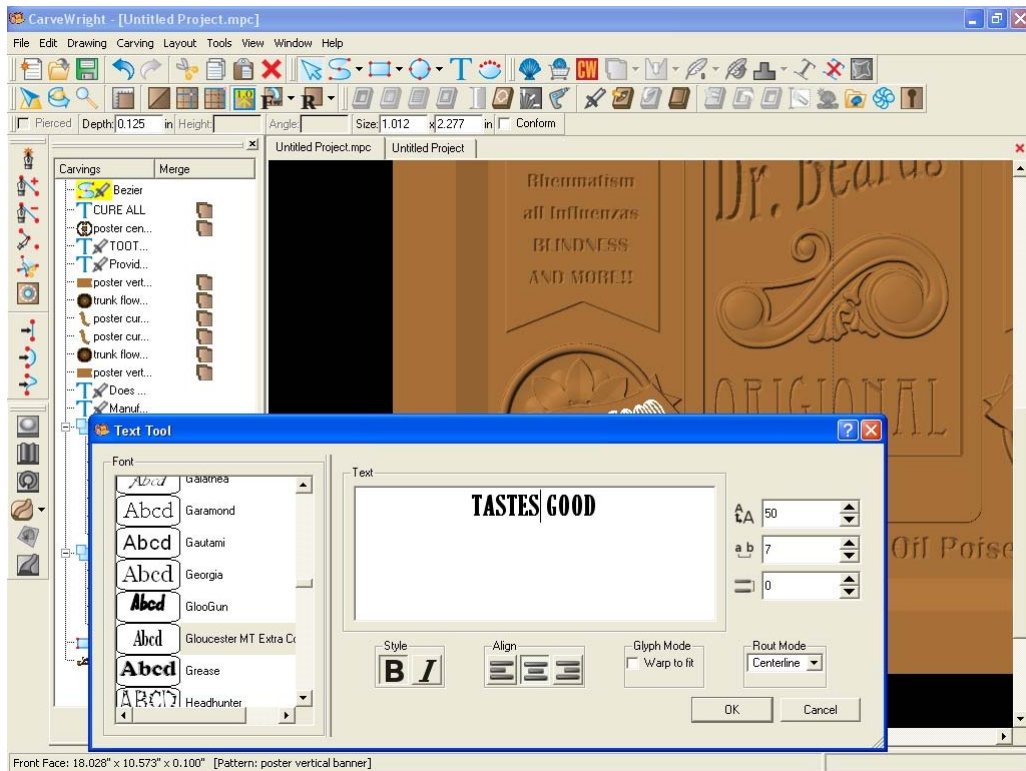
Move to the left banner to place centerline text. Select the Spline tool.



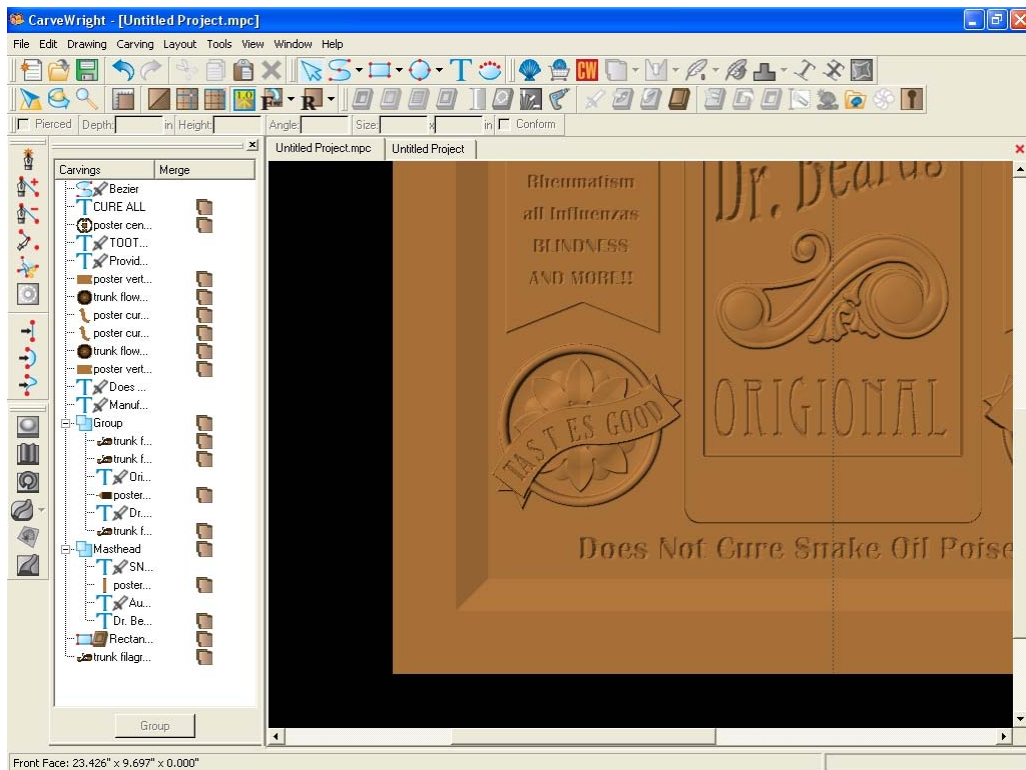
Draw a three node spline along the bottom edge of the curved banner



Select the Decorate Text icon. Type in the text “Tastes Good”. Make sure the centerline mode is selected. Set the text size to 50 and the character spacing to 7.



Modify the text and spline as needed and make sure that the Conform check box is filled.



Repeat the same steps for engraving the banner on the right side of the bottle to complete the composition.

