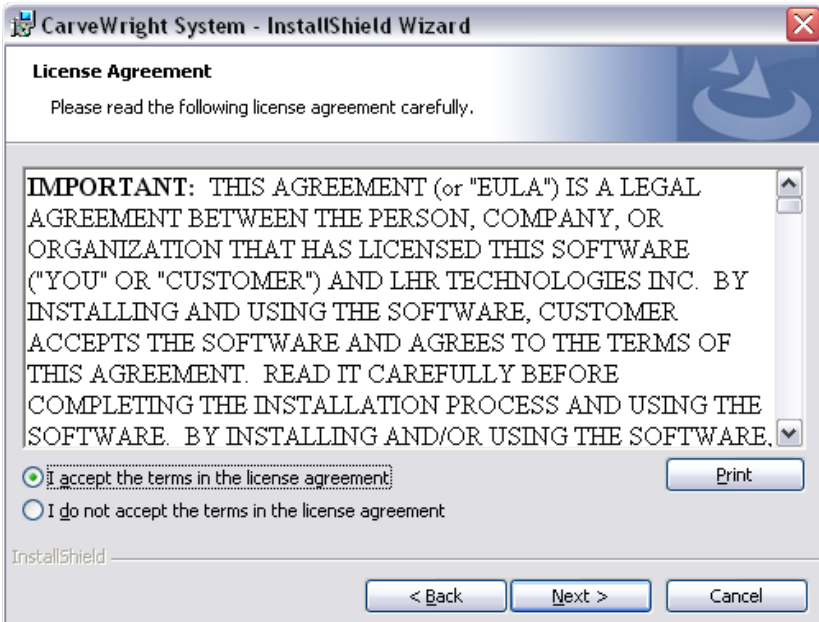


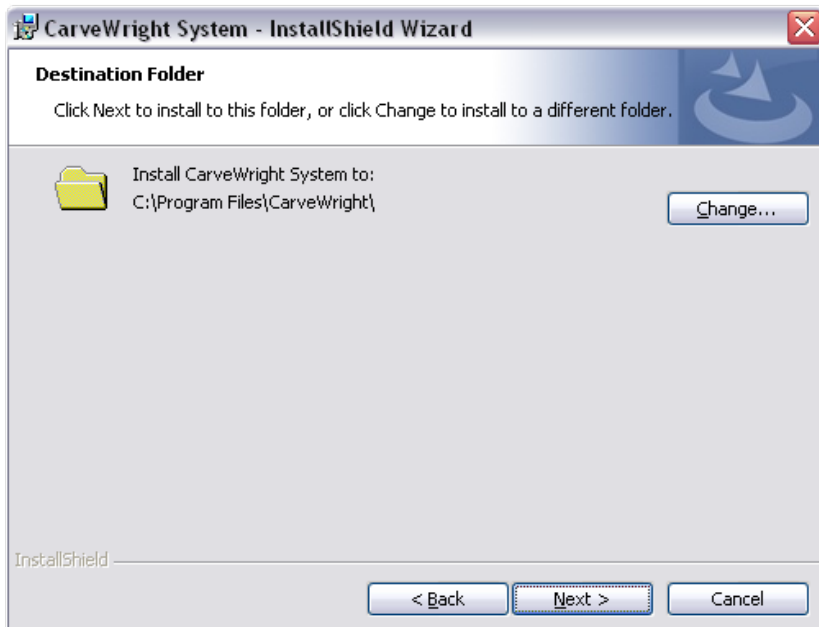
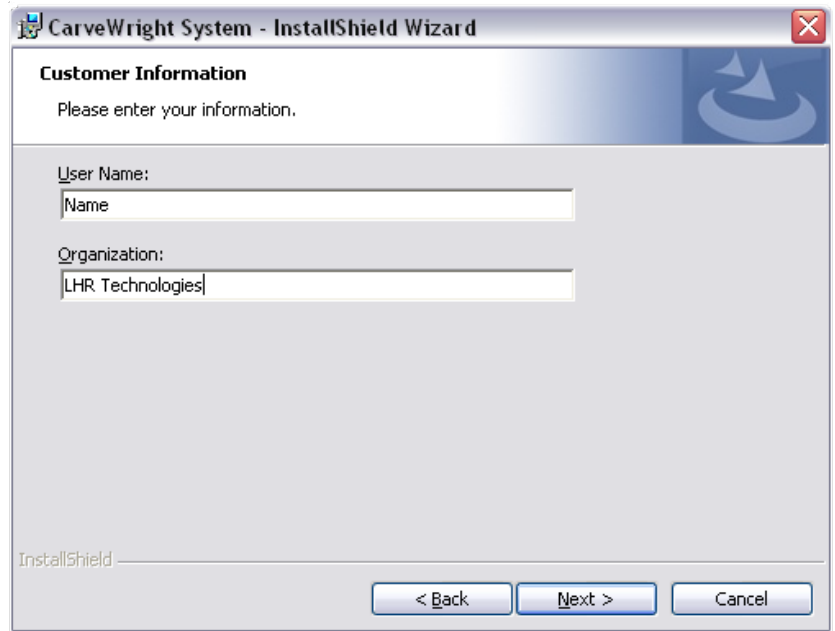
Microsoft® Windows® XP SP 2, Windows® 2000

The first screen that appears will be a screen welcoming to the CarveWright Designer Software InstallShield Wizard. Click the “Next” button when ready.



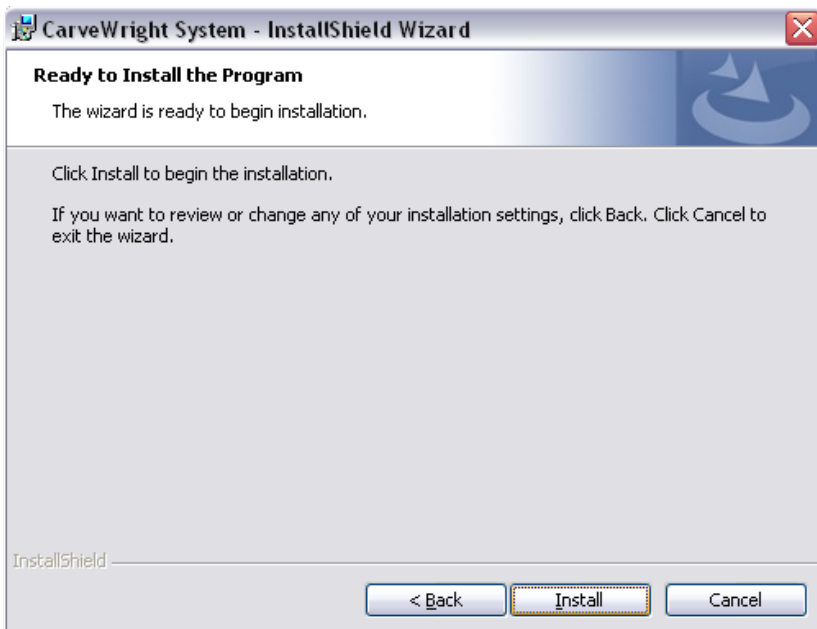
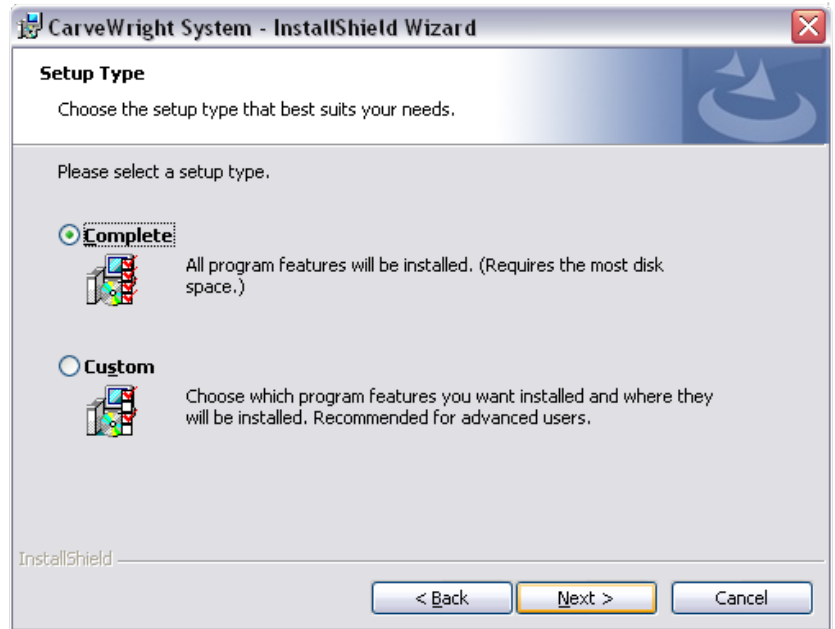
This screen allows you to read, understand, and accept the license agreement. Read through the License Agreement the terms and click on the radio button *I accept the terms in the license agreement* if agreed upon. The “Print” button will bring up the Print Dialog Screen to print the License Agreement for your records. The “Next” button will not be selectable unless the terms are agreed to. Click the “Next” button when ready.

This screen prompts for the Username that will be the default author name for projects that are saved to the computer. The Organization field may be left blank. Once the desired fields are complete, click the “Next” button.

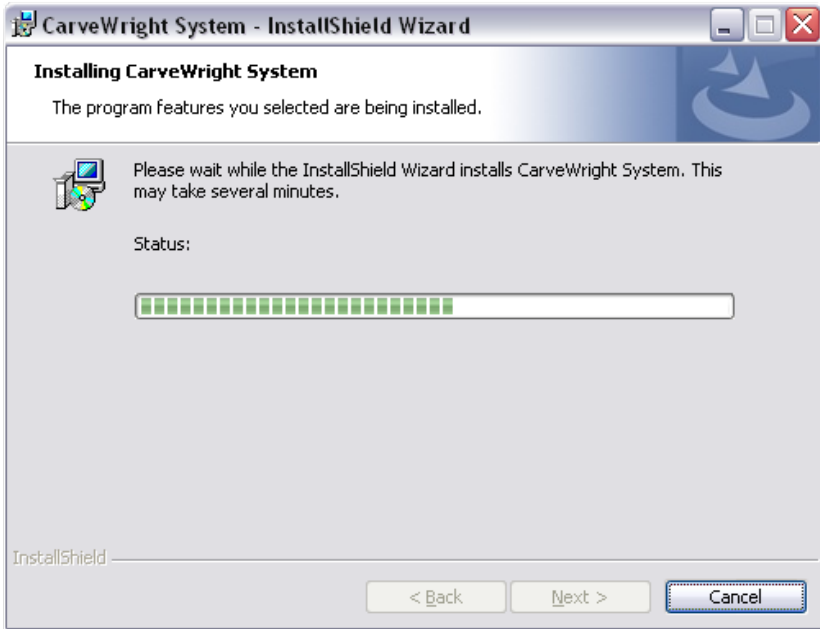


This screen will show the default program installation directory. A CarveWright folder will be created in the computer’s Program Files’ folder. The “Change” button will allow for changing the installation directory. Click the “Next” button when ready.

This screen shows what type of installation the program will perform. The default is Complete, which is the recommended installation. Select the Custom radio button to install only the minimum required features (This option is only recommended for advanced computer users). Once the appropriate radio button is selected, click the “Next” button when ready.

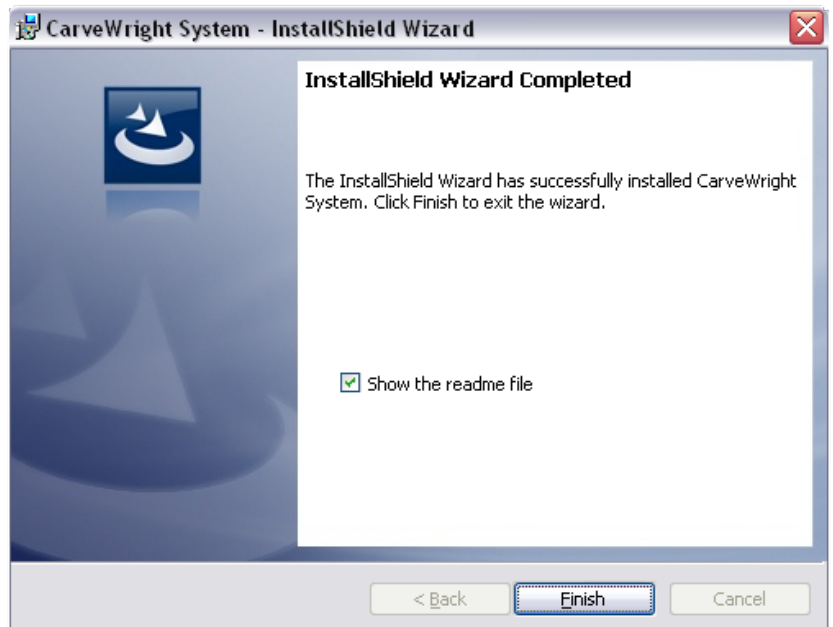


This screen will give a final opportunity to make any changes to the options that have been chosen to this point in the of installation process. If there is any uncertainty, select the “Back” button to make any necessary changes. Click the “Install” button when ready.



The installation progress will display as the files are installed.

This screen displays that the installation process is complete and prompts whether or not to show the readme file. The Readme File will show the current software version installed and the major updates/changes that have been made to the software/firmware for the CarveWright/CompuCarve Woodworking Machine. The system will default to showing you the “read me” file once you close this box. You can unselect this item if you do not wish to see this file. The readme file can also be accessed from the Start Menu under the CarveWright Menu. Click the “Finish” button when ready.



The CarveWright Designer Icon should now appear on your computer desktop.