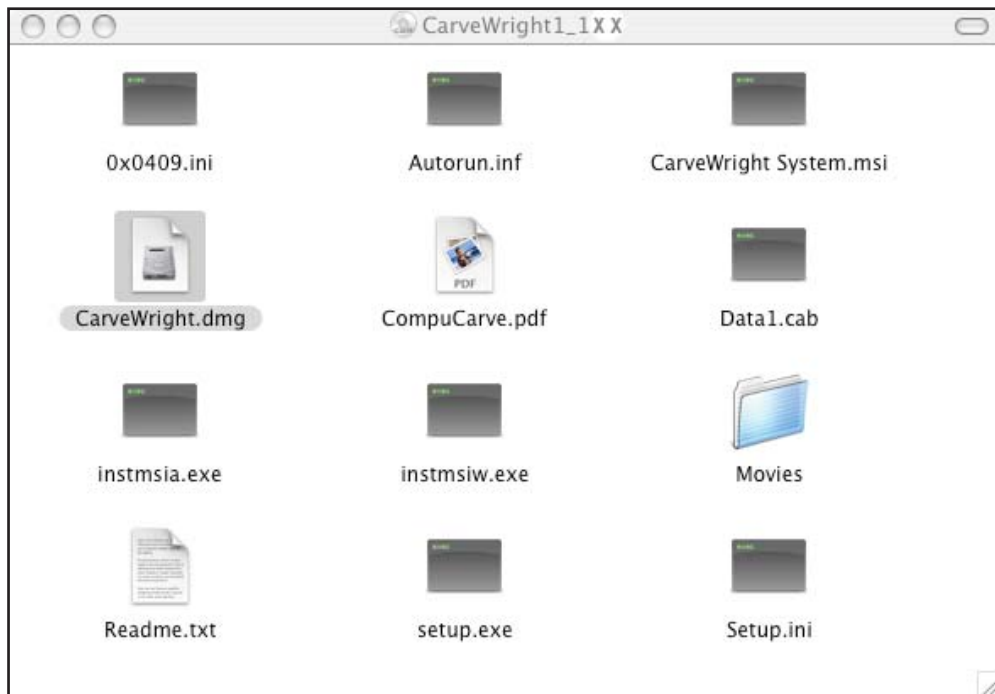


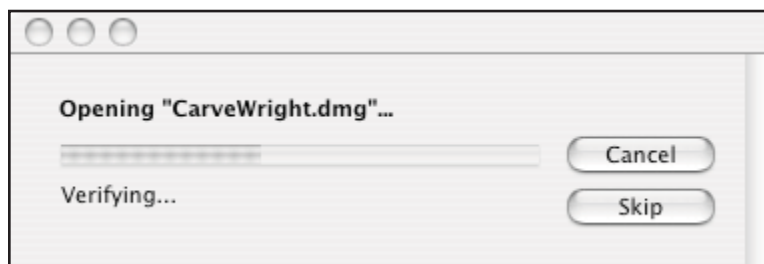
Mac OS® X ver. 10.4 or later

The person installing the software will need administrator privileges to complete the installation process.

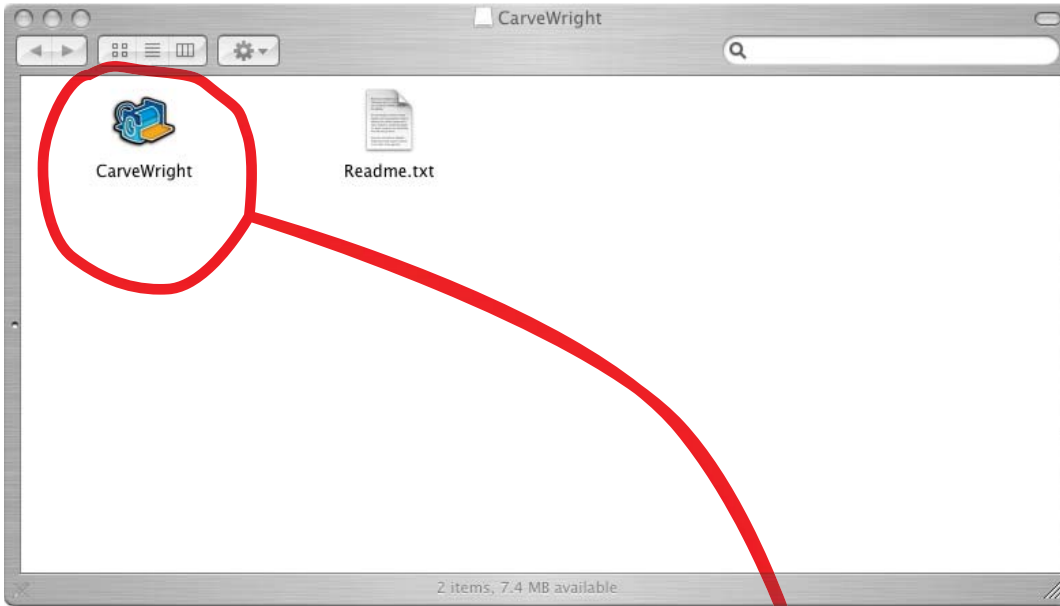
Double-click the disc icon on your desktop that represents the CarveWright installation disc and in the CarveWright window, look for the file *CarveWright.dmg*. Drag the file to the desktop area before attempting to install it. Double-click the file to install disc image.



The progress bar will indicate at which point the installation is. The 'Cancel' button will stop the process and the 'Skip' button will move to the next process.



An icon will be placed on the desktop to reflect the Disk Image has been mounted. Double clicking the new icon will open the contents of the folder to display the CarveWright Designer Software as well as the Readme file which shows the current software version installed and the major updates/changes that have been made to the software/ firmware for the CarveWright/CompuCarve Woodworking Machine



Drag this icon from the CarveWright folder to the Applications folder or the desired file location.

The applications folder is where most of the programs on a Mac system are kept. It can be accessed through Macintosh HD (default name).

