

Activate Subscription

The code needed to activate Subscriptions will come in one of two different methods. It will either come in the packaging or in an e-mail from the store purchase. The Subscription can not be activated to the customer account without this 16 character code.

Your purchased software:

```
-----  
SKU:                0001-04-0000001  
Product:           The CarveWright Project of the Month  
Item price:        $XXX.XX  
Serial Number:     Serial # 1: XXXX.XXXX.XXXX.XXXX
```

--
Thank you for using
our shopping system

CarveWright
Phone: 713-473-6572
URL: www.carverwright.com

Figure 18.20. Subscription of the Month E-mail

Click the 'Activate Subscription' button to display the 'Registration. There are two methods for subscription activation. The first method is 'License Online Now', which requires the computer be directly connected to the internet. The other method, 'License at www.carverwright.com from another computer' is for computers that are not directly connected to the internet but the user has access to the internet at another computer.

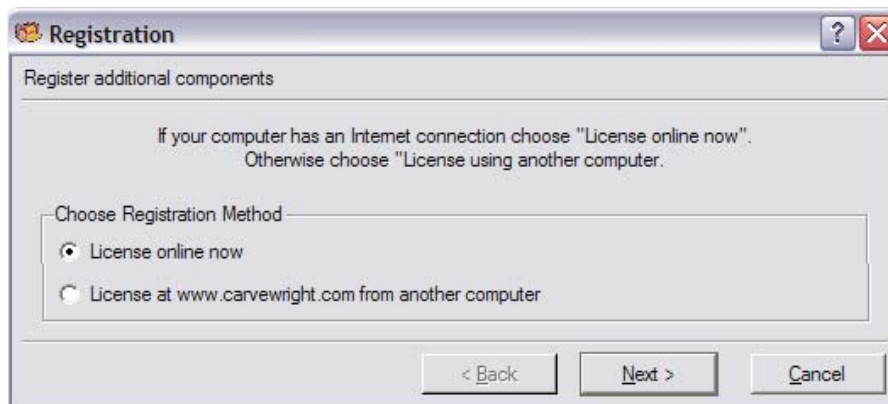


Figure 18.21. Registration dialog - Choose Registration Method



Online Method

For the online method, the serial number provided will need to be available (Figure 18.3) as well as the username and password for the customer account.

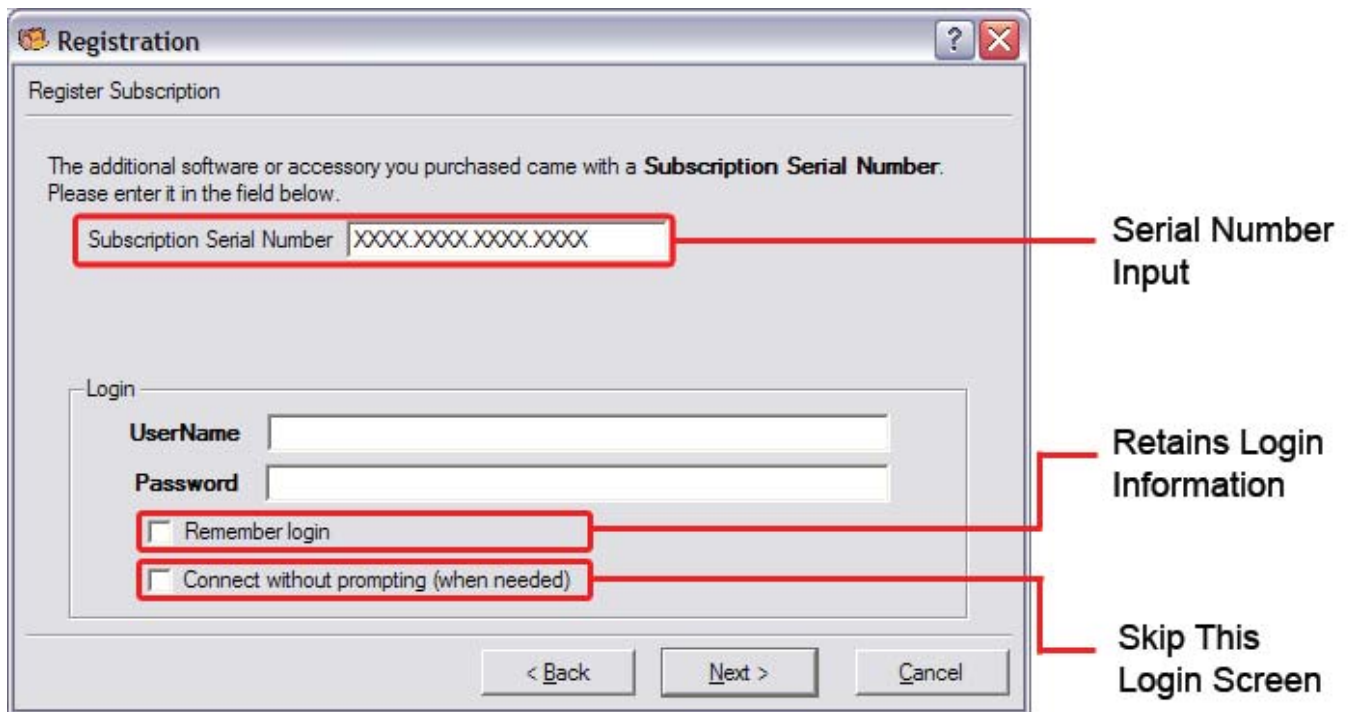


Figure 18.22. Registration - Register Subscription dialog

The check box for 'Remember Login' will retain the username and password (shown in asterisks) so the user will not have to enter the information the next time it is prompted for. The 'Connect without prompting (when needed)' option will skip screens like this if the username and password entered are correct. If the username and/or password is incorrect, the user will be brought back to this screen to correct the error.

Once all the information has correctly been entered, the 'Next' button will send the information to the customer account. When successfully activated to the customer account and computer, a confirmation will display on the screen stating the additional software licensing was successful. If unsuccessful, then the prompted for information will need to be corrected.



Figure 18.23. Registration - Subscription Registered dialog (Successful Subscription Activation)

The 'Finish' button will close the dialog and display the 'Your Licenses' dialog. The first project of the month should be e-mailed to the e-mail address on the customer account about 30 minutes after successful subscription activation. It is a good idea to log in to the customer account online and verify that the e-mail address is correct.



License using Another Computer Connected to the Internet

For computers not connected to the internet, a display will provide information on how to activate the software to the account as well as the computer using another computer. This process still requires an internet connection but it does not have to be connected to the computer where the software is installed.

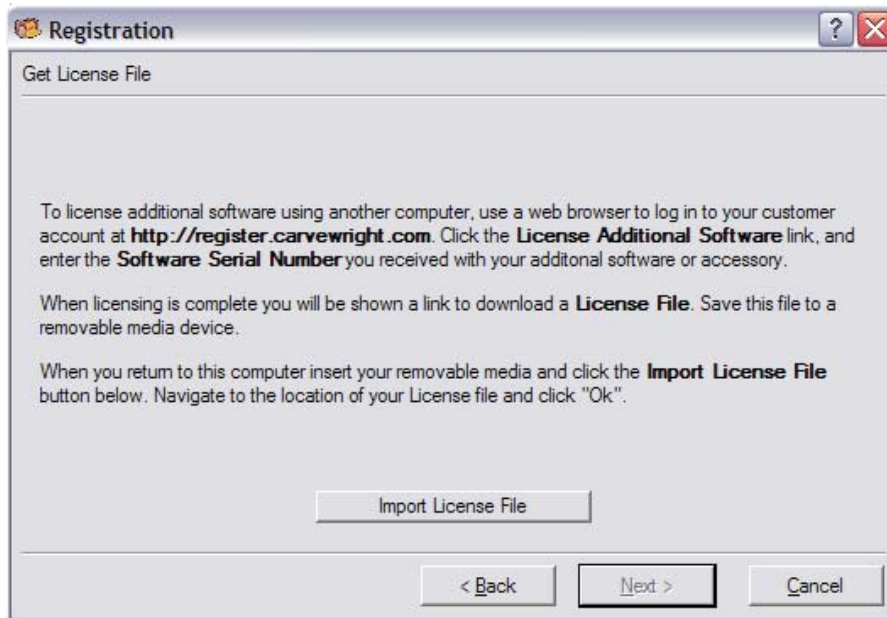


Figure 18.24. Registration - Get License File Dialog

To license additional software using another computer, use a web browser to log in to your customer account at <http://www.carvewright.com/register>.



Figure 18.25. Customer Account Login (Web)

Enter the subscription serial code in the field under 'Enter a subscription activation code here' followed by the 'Claim Subscription' button.



Figure 18.26. Online Subscription Activation



At the bottom of the screen will be a section that shows the subscription information after a successful subscription activation. This section will show when the Subscription was activated (not purchased) and how many units left on the subscription. The automated process takes about 30 minutes before the first project is received. The first issue that will be received is the last project issued.

- Your Subscriptions

Project of the Month - Started February 24th, 2009 with 12 units remaining.

Figure 18.27. Online Account - Subscription sub-section

Once the e-mail is received, follow the instructions for importing a license stated earlier in the chapter. The Subscription of the Month can only be activated to one customer account and is non-transferable. The subscription start from the date of activation. It is not possible to pick and choose which months are desired.

