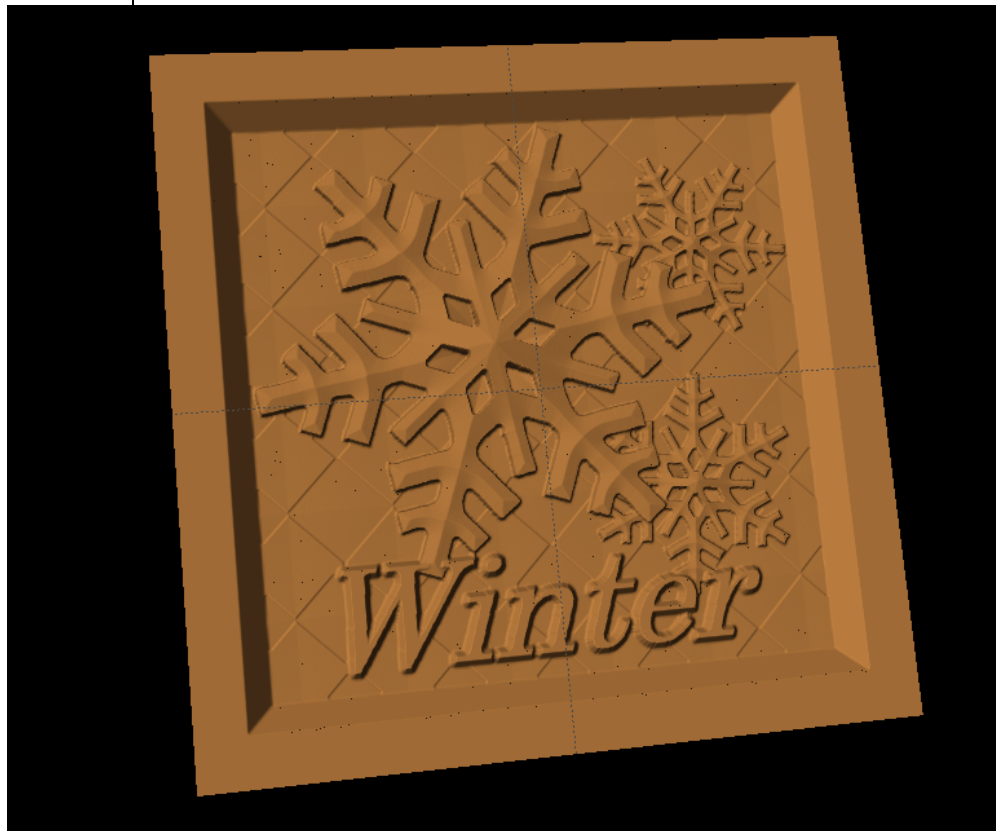


This project covers the following design concepts:

- ✓ STARTING SOFTWARE
- ✓ MENUS, TOOLBARS, SHORTCUT KEYS OR MOUSE BUTTONS
- ✓ MANIPULATING THE WORKPIECE
- ✓ SNAP TO GRID
- ✓ DRAWING TOOLS
- ✓ CARVE REGION
- ✓ FEATHERING
- ✓ PATTERN PLACEMENT
- ✓ ROTATE ELEMENT
- ✓ COPY & PASTE
- ✓ ADJUSTING HEIGHT
- ✓ TEXT TOOL
- ✓ FINE TUNING
- ✓ ADJUSTING DEPTH
- ✓ TEXTURE
- ✓ BOARD SETTINGS
- ✓ MANAGING DATA
- ✓ UPLOADING TO MEMORY CARD
- ✓ SELECT QUALITY SETTING
- ✓ NAME PROJECT



## INSTRUCTIONS:

### ✓ STARTING THE SOFTWARE

Open the CarveWright Project Designer Software

*The Welcome screen appears with project options.*



Select "New Project"

Set your project board dimensions.

Length: 7"

Width: 7"

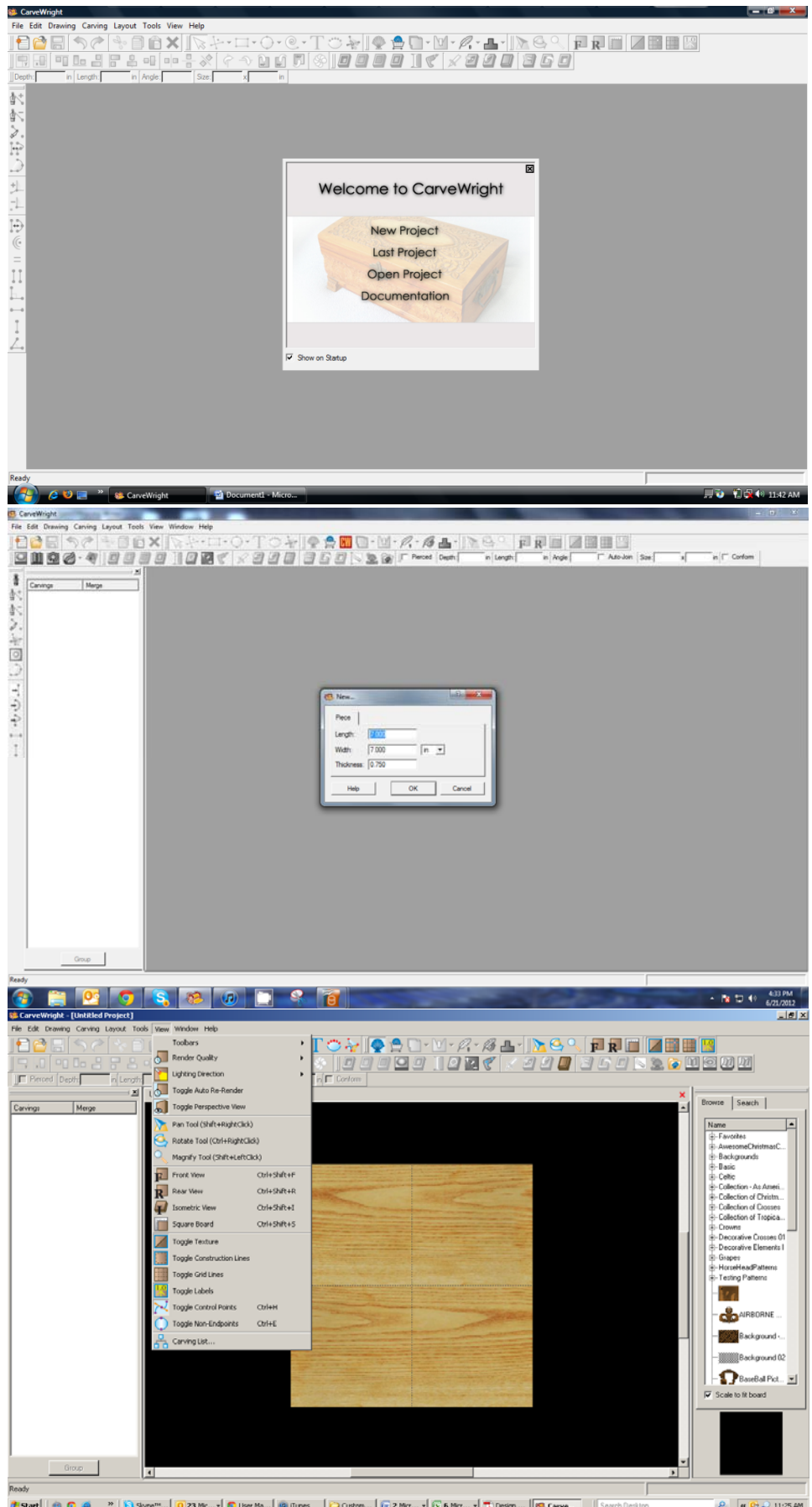
Thickness: .75"

Click OK

*The project board size is not necessarily the actual size of the board being put into machine.*

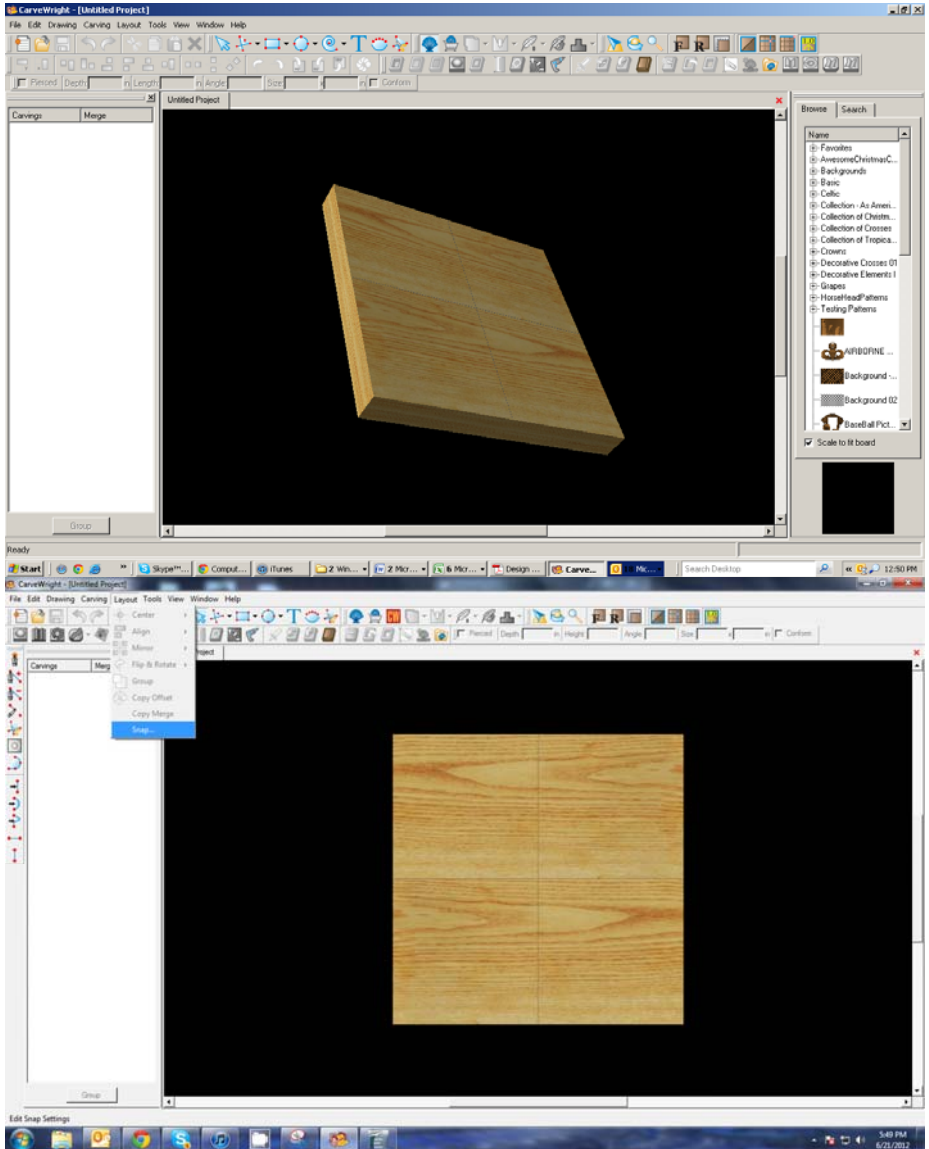
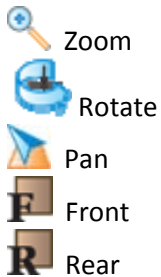
### ✓ MENUS, TOOLBARS, SHORTCUT KEYS OR MOUSE BUTTONS

*For every software function, we provide you three distinct ways to access that function. They are usually menu, icon or right-click. Some common functions, such as Copy and Paste, also use shortcut keys. These will also work in Project Designer.*



## ✓ MANIPULATING THE WORKPIECE

Board piece will display on screen in three dimensions. You can use these tools to get a different view of your project board.



## ✓ SNAP TO GRID

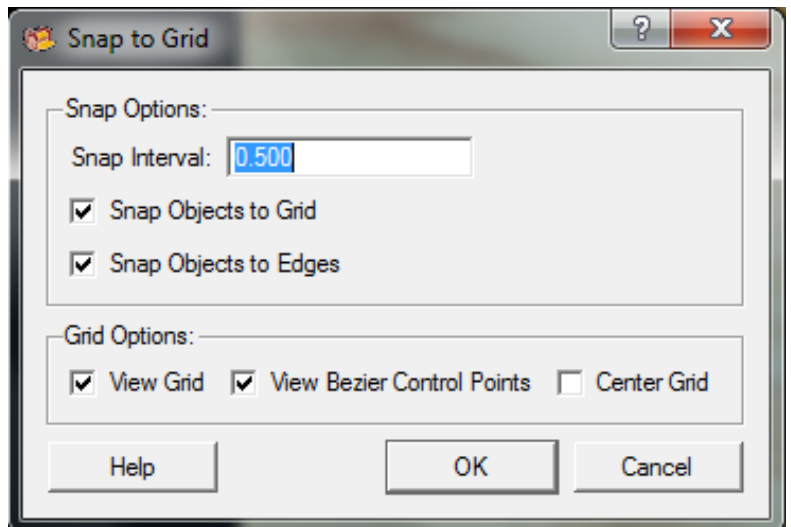
Under LAYOUT menu, select SNAP.

Snap Interval should be .5 inch interval by default.

Check boxes:

- Snap to grid
- Snap to edges
- View grid
- View Bezier Control Points (should already be selected as default)

Click ok



## ✓ DRAWING TOOLS



Using the grid, draw a box or rectangle .5" inside the project board, which should give you a box that is 6" x 6".

Select the "Pattern Tool" icon to open the pattern library along the right side.



## ✓ CARVE REGION



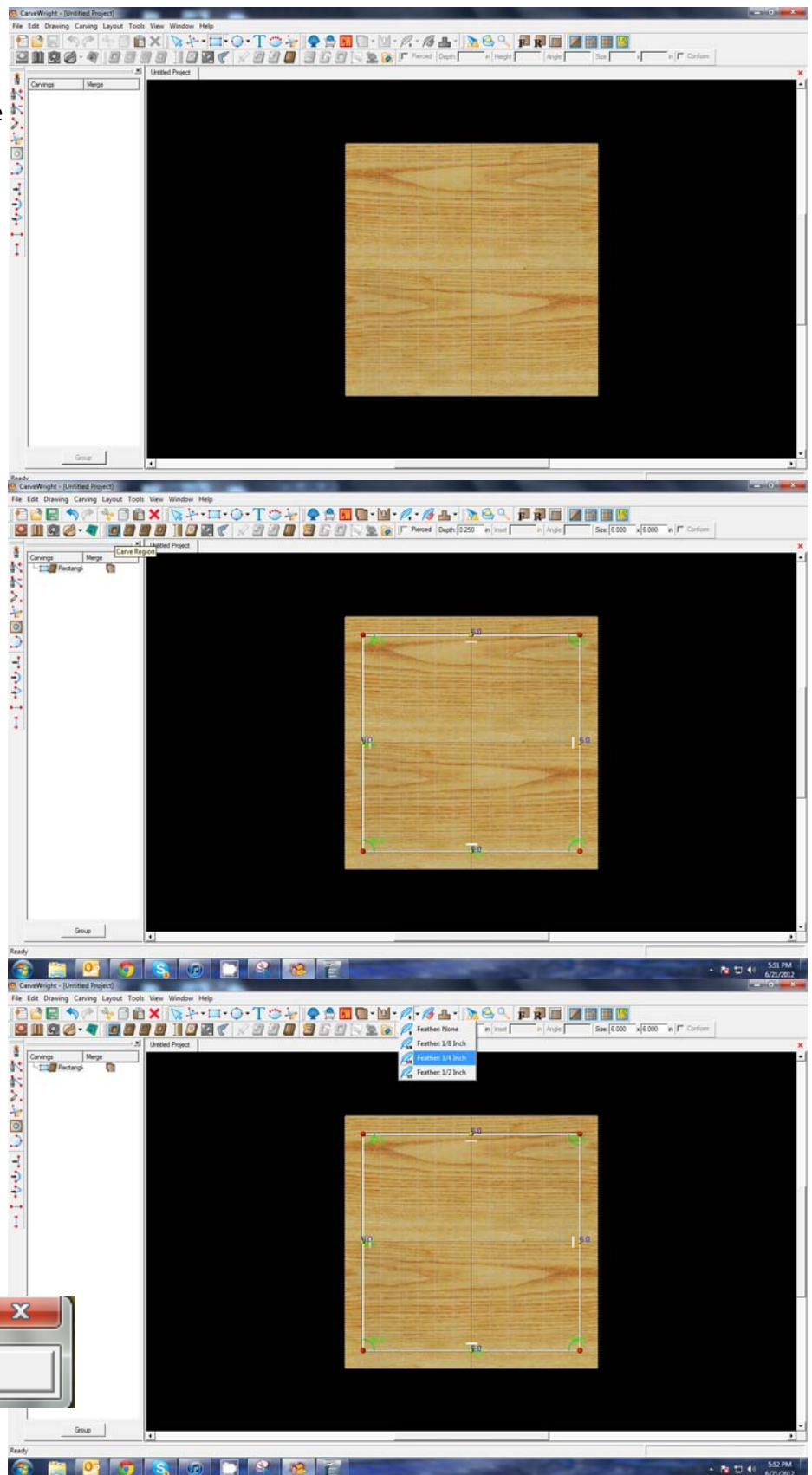
Select "Carve Region" icon.

*This creates a carved out region inside the boundary. Automatically defaults to .250" depth. Remember depth of pattern & how depth effects carve time.*

## ✓ FEATHERING

Select the drop-down Feather menu and select 1/4" feather.

Select "Accept"



## ✓ PATTERN PLACEMENT



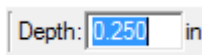
Select the “Pattern Tool” icon to open the pattern library along the right side.

Select “snowflake” under “Season Patterns” in your Favorites library from the winter folder.

*Click once on pattern and once on board to place or click and drag to the board.*

*Double-clicking will attempt to open it in Pattern Editor Software.*

Set depth of snowflake to .250”.

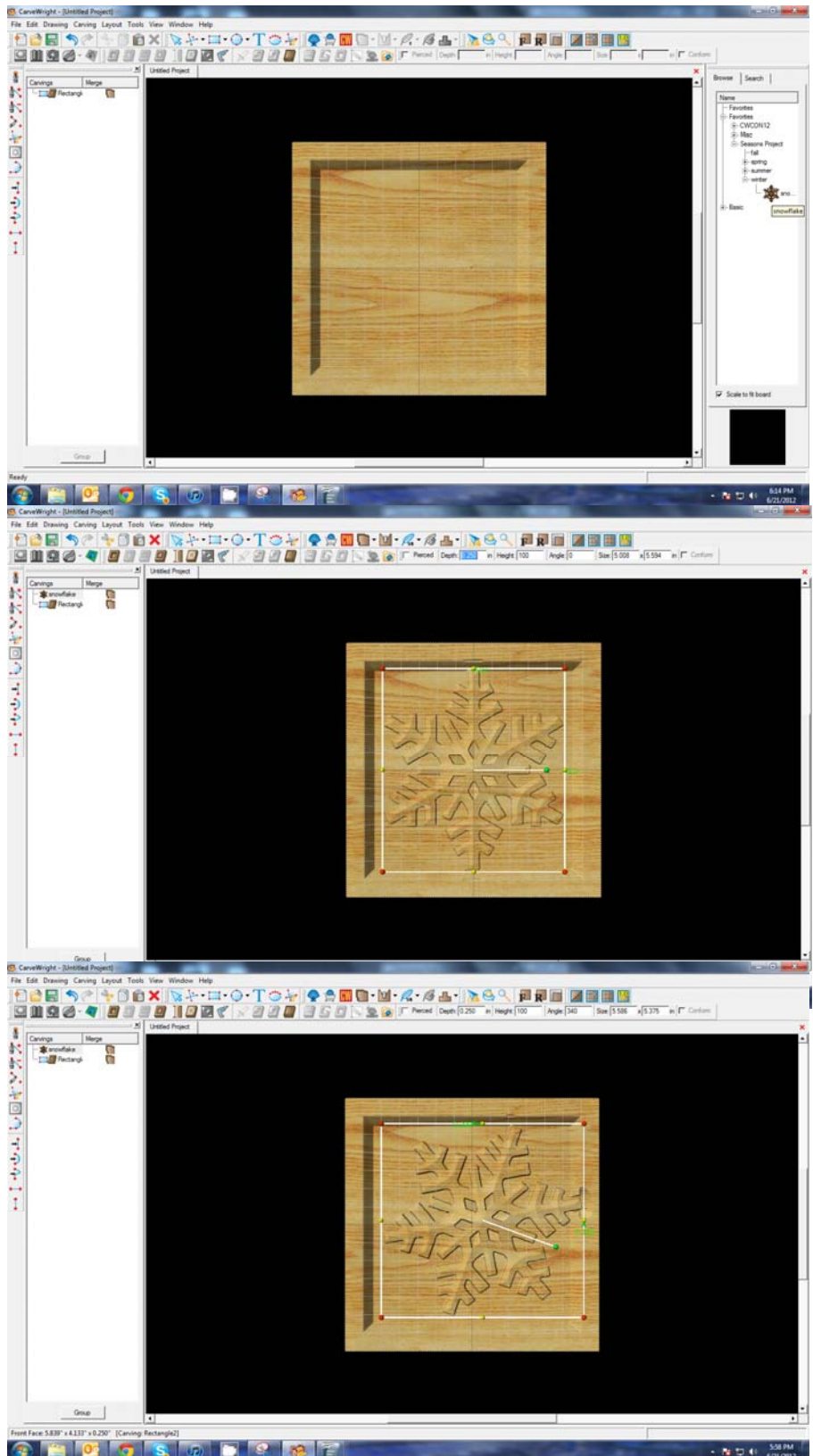


## ✓ ROTATE ELEMENT



Click on the green knob of the “Rotate” bar in the center of the element.

Rotate snowflake.





## ✓ PATTERN MANIPULATION



Use Red Nodes on the corner to the element larger or smaller.

Scale

*Yellow nodes will stretch or skew the element.*

## ✓ SNAP TO GRID



Click "Toggle Snap to Grid" icon to turn grid OFF.

## ✓ COPY & PASTE

With the snowflake selected, right-click and select copy.

Right-click again and select paste.

## ✓ PATTERN MANIPULATION



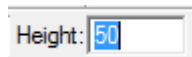
Use Red Nodes on the corner to Scale the element smaller.



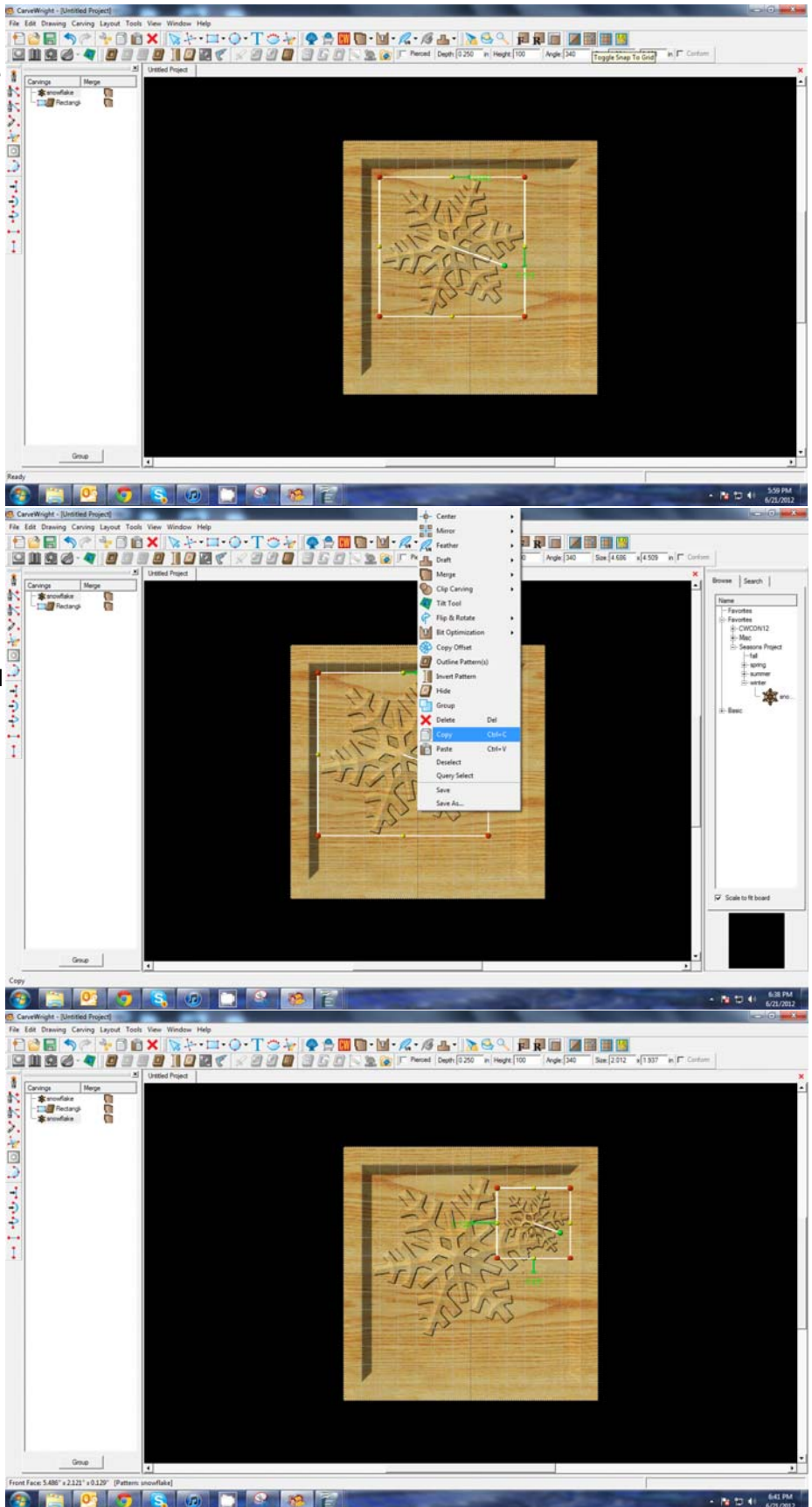
Use Rotate knob to rotate the pattern.

## ✓ ADJUSTING HEIGHT

Set the Height to .50.



*Adjusting height is useful in making the same elements look like they are behind or in front of other objects.*



## ✓ COPY & PASTE

Right-click again and select “Paste”.

*Since the last thing you copied was the snowflake, you do not need to copy it, again. It is still on your “Clipboard”.*

## ✓ PATTERN MANIPULATION

Manipulate the pattern, again, changing the rotation & size of it until you have it arranged as you would like.

## ✓ TEXT TOOL



Next, select the “Text Tool” and click on board.

Text dialog box will appear. Select from any of the true type fonts that you have on your computer. *Some work better than others.*

Type the word “Winter”

Select “Raster” from one of the available Rout Modes.

*Notice the other options available from “Text Tool”.*

## ✓ FINE TUNING

Manipulate the size and placement of the word, just as you would a pattern by scaling to size.

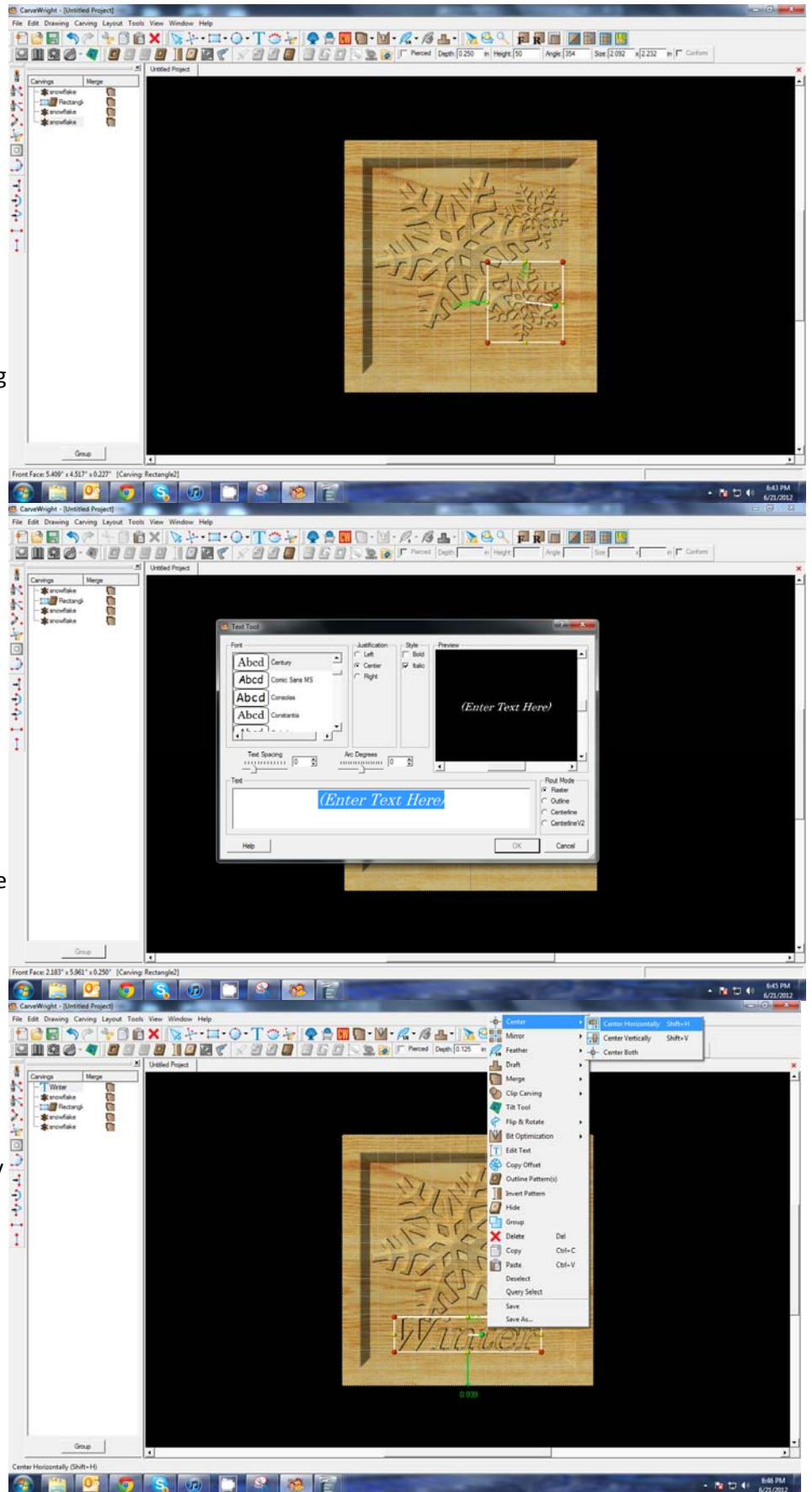
## ✓ CENTERING



Right-click to see available options and select Center > Horizontally.

## ✓ ADJUST DEPTH

Depth: 0.250 in



## ✓ TEXTURES

Select "Texture" tool.



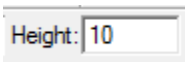
*Texture dialog box appears displaying a variety of available textures.*

Select "Peaks" and leave the interval at 1"

Click OK.

*Texture appears in the rectangular region, but is overtaking parts of the design.*

## ✓ ADJUSTING HEIGHT



Correct this by adjusting the Height to "10".

*This sets the height low enough to not overpower the foreground objects.*

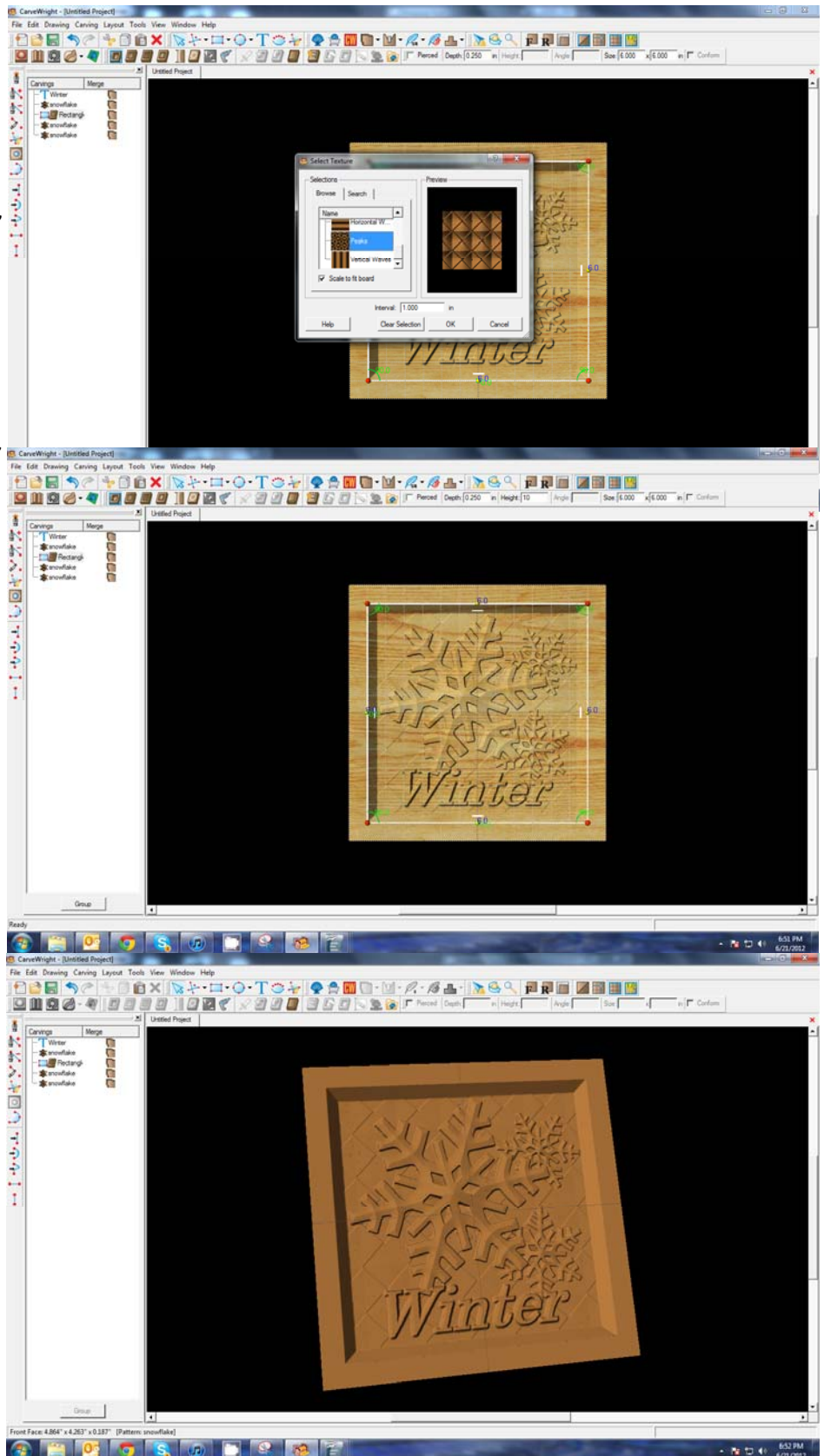
## ✓ BOARD SETTINGS

Go to View > Toggle Texture to remove wood grain for better viewing.

*Also look at View > Board Settings > Stain/Finish to see how you can change the Wood Type/Stain or Wood Finish. This is a great way to present a proposal to a potential customer.*



Rotate or zoom in on your project to view it from different angles and make any necessary adjustments.





## REMEMBER THESE FUNCTIONS FROM PREVIOUS STEP-BY-STEP PROJECTS

### ✓ MANAGING DATA

Select “File” > “Save”



### \*\*\*\*\*IMPORTANT\*\*\*\*\*

**Once a project is uploaded to a memory card, it cannot be brought back from the memory card into the software. Always SAVE YOUR PROJECT on your hard drive. A Projects folder is recommended and you should know where you saved it.**

### ✓ UPLOADING TO MEMORY CARD

Make sure your Memory Card



& Programmer are properly attached via your USB port, Select “File” > “Upload” to save to your memory card.

Select Quality Setting

- DRAFT
- NORMAL
- BEST
- OPTIMUM

*These settings determine the number of passes the machine makes to carve your project. The more lines the better the surface finish. Make your decision based on material type, fondness of sanding vs. machine time, & test carve vs. final. Notice the estimated carving time differs by quality setting.*

Name Your Project

*Example:*

*winterflake\_B\_1h45m*

*(recognizable name\_quality setting\_estimated time to carve)*

Click “Upload”

**NOTE: Actual board to be placed in machine should be 7” longer or you should use a sled that has 3.5 extra inches on each end to STAY UNDER THE ROLLERS.**